

# Hose Whip Restraint

## Safety restraining system for pressure hoses

The Hose Whip Restraint System is designed to prevent whipping of a pressurized hose in the event of the hose separating from its fitting.

This system provides an additional level of safety and helps prevent damage to nearby equipment or injury to operators near the failed hose by limiting the whip or travel of the pressurized hose after it breaks free from its fitting.

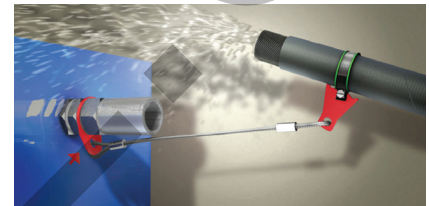
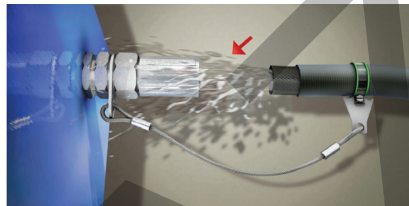
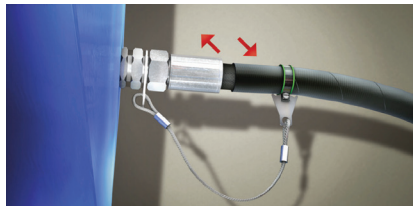
Serious damage or injury can occur from whipping hoses, especially at higher pressures. The system is comprised of two parts – a hose collar and a cable assembly.

The hose collar (WRCxxxx) is selected based on the outside diameter of the hose, and the cable assembly is selected based on the type of hose connection.

Two types of cable assemblies are

available – one for flange-type connections (WRFxxx), and the other for port adapters (WRAxxx).

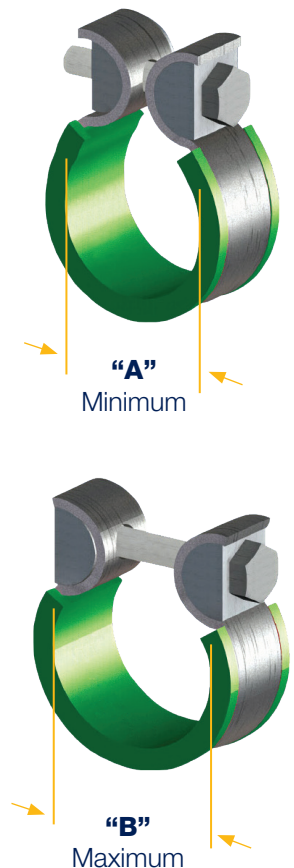
The Hose Whip Restraint is not to be used in place of proper hose crimping procedures as outlined in Hose Products Division Catalog 4400. Exceeding the maximum operating pressure of the hose jeopardizes the proper operation of the Hose Whip Restraint System.



**Step 1:** Select a WRC part number based on the outside diameter of your hose.

### Hose Collars

Part Number	Min. Opening "A"		Max. Opening "B"		Hose Collar Bolt Size*
	mm	in	mm	in	
WRC1212	12,0	0.47	12,5	0.49	M6
WRC1313	13,0	0.51	13,5	0.53	M6
WRC1415	14,0	0.55	15,0	0.59	M6
WRC1718	17,0	0.67	18,0	0.71	M6
WRC1819	18,0	0.71	19,0	0.75	M6
WRC2021	20,0	0.79	21,0	0.83	M6
WRC2223	22,0	0.87	23,0	0.91	M6
WRC2425	24,0	0.95	25,0	0.98	M6
WRC2526	25,0	0.98	26,0	1.02	M6
WRC2728	27,0	1.06	28,0	1.10	M6
WRC2829	28,0	1.10	29,0	1.14	M6
WRC3031	30,0	1.18	31,0	1.22	M6
WRC3435	34,0	1.34	35,0	1.38	M6
WRC3637	36,0	1.42	37,0	1.46	M6
WRC3839	38,0	1.50	39,0	1.54	M6
WRC4243	42,0	1.65	43,0	1.69	M6
WRC4445	44,0	1.73	45,0	1.77	M6
WRC4547	45,0	1.77	47,0	1.85	M8
WRC4850	48,0	1.89	50,0	1.97	M8
WRC5153	51,0	2.01	53,0	2.09	M8
WRC5456	54,0	2.13	56,0	2.21	M8
WRC6365	63,0	2.48	65,0	2.56	M8
WRC6971	69,0	2.72	71,0	2.78	M8



\*Bolt size on collar must match the WRA or WRF bolt size.