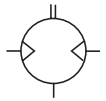
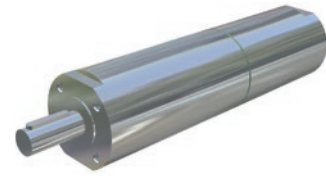


## P1VAS Stainless Steel Vane Air Motors with Integrated Planetary Gear boxes

**Note:** All technical data are based on a working pressure of 6 bar and with oil lubrication. With oil free operation performances are reduced by 10 to 20%. Speed tolerance accuracy in between clock and anti clockwise directions is  $\pm 10\%$ .

**Note!** Inlet and exhaust air flows are critical for reaching the best performances.



### Data for Reversible Air Motor Power 600 watts, with Keyed Shaft

| Max power | Free speed | No-minal speed | Nominal torque | Min starting torque | Stall torque | Max adm torque | Air consumption | Supply/Exhaust | Min pipe | Weight | ATEX        | Rotation | Vanne Option | Order Code           |
|-----------|------------|----------------|----------------|---------------------|--------------|----------------|-----------------|----------------|----------|--------|-------------|----------|--------------|----------------------|
| [watt]    | [rpm]      | [rpm]          | [Nm]           | [Nm]                | [Nm]         | [Nm]           | [m3/min]        |                | [mm]     | [kg]   |             |          |              |                      |
| 600       | 13500      | 6750           | 0,85           | 1,25                | 1,60         | *              | 0,85            | G3/8   G1/2    | 12   12  | 2,20   | T6   T80°C  | L & R    | 0, C, Z      | <b>P1VAS060A0D50</b> |
| 600       | 5500       | 2750           | 2,00           | 3,10                | 3,90         | *              | 0,85            | G3/8   G1/2    | 12   12  | 2,70   | T6   T80°C  | L & R    | 0, C, Z      | <b>P1VAS060A0550</b> |
| 600       | 4000       | 2000           | 2,80           | 4,30                | 5,40         | *              | 0,85            | G3/8   G1/2    | 12   12  | 2,30   | T3   T195°C | L & R    | 0, C, Z      | <b>P1VAS060A0400</b> |
| 600       | 3000       | 1500           | 3,80           | 5,70                | 7,20         | *              | 0,85            | G3/8   G1/2    | 12   12  | 2,30   | T4   T130°C | L & R    | 0, C, Z      | <b>P1VAS060A0300</b> |
| 600       | 2000       | 1000           | 5,70           | 8,50                | 10,80        | *              | 0,85            | G3/8   G1/2    | 12   12  | 2,30   | T4   T130°C | L & R    | 0, C, Z      | <b>P1VAS060A0200</b> |
| 600       | 700        | 350            | 16,30          | 24,50               | 31,10        | *              | 0,85            | G3/8   G1/2    | 12   12  | 2,60   | T6   T80°C  | L & R    | 0, C, Z      | <b>P1VAS060A0070</b> |
| 600       | 500        | 250            | 22,90          | 34,30               | 43,50        | *              | 0,85            | G3/8   G1/2    | 12   12  | 2,70   | T6   T80°C  | L & R    | 0, C, Z      | <b>P1VAS060A0050</b> |
| 600       | 340        | 170            | 33,70          | 50,60               | 64,00        | *              | 0,85            | G3/8   G1/2    | 12   12  | 2,70   | T6   T80°C  | L & R    | 0, C, Z      | <b>P1VAS060A0034</b> |
| 300       | 180        | 90             | 31,80          | 47,70               | 60,40        | *              | 0,55            | G3/8   G1/2    | 12   12  | 2,70   | T6   T80°C  | L & R    | 0, C, Z      | <b>P1VAS060A0018</b> |

Details on page 15

### Data for Reversible Air Motor Power 900 watts, with Keyed Shaft

| Max power | Free speed | No-minal speed | Nominal torque | Min starting torque | Stall torque | Max adm torque | Air consumption | Supply/Exhaust | Min pipe | Weight | ATEX        | Rotation | Vanne Option | Order Code           |
|-----------|------------|----------------|----------------|---------------------|--------------|----------------|-----------------|----------------|----------|--------|-------------|----------|--------------|----------------------|
| [watt]    | [rpm]      | [rpm]          | [Nm]           | [Nm]                | [Nm]         | [Nm]           | [m3/min]        |                | [mm]     | [kg]   |             |          |              |                      |
| 900       | 12600      | 6300           | 1,35           | 2,00                | 2,60         | *              | 1,40            | G3/8   G1/2    | 12   12  | 3,55   | T6   T80°C  | L & R    | 0, C, Z      | <b>P1VAS090A0C60</b> |
| 900       | 5200       | 2600           | 3,30           | 4,90                | 6,20         | *              | 1,40            | G3/8   G1/2    | 12   12  | 3,55   | T6   T80°C  | L & R    | 0, C, Z      | <b>P1VAS090A0520</b> |
| 900       | 3670       | 1835           | 4,60           | 7,00                | 8,90         | *              | 1,40            | G3/8   G1/2    | 12   12  | 3,65   | T3   T195°C | L & R    | 0, C, Z      | <b>P1VAS090A0367</b> |
| 900       | 2850       | 1425           | 6,00           | 9,00                | 11,40        | *              | 1,40            | G3/8   G1/2    | 12   12  | 3,65   | T4   T130°C | L & R    | 0, C, Z      | <b>P1VAS090A0285</b> |
| 900       | 1900       | 950            | 9,00           | 14,50               | 17,10        | *              | 1,40            | G3/8   G1/2    | 12   12  | 3,65   | T4   T130°C | L & R    | 0, C, Z      | <b>P1VAS090A0190</b> |
| 900       | 650        | 325            | 26,40          | 39,60               | 50,20        | *              | 1,40            | G3/8   G1/2    | 12   12  | 3,95   | T6   T80°C  | L & R    | 0, C, Z      | <b>P1VAS090A0065</b> |
| 900       | 470        | 235            | 36,50          | 54,80               | 69,40        | *              | 1,40            | G3/8   G1/2    | 12   12  | 3,95   | T6   T80°C  | L & R    | 0, C, Z      | <b>P1VAS090A0047</b> |
| 900       | 310        | 155            | 55,40          | 83,10               | 105,30       | *              | 1,40            | G3/8   G1/2    | 12   12  | 3,95   | T6   T80°C  | L & R    | 0, C, Z      | <b>P1VAS090A0031</b> |

Details on page 15

### Data for Reversible Air Motor Power 1600 watts, with Keyed Shaft

| Max power | Free speed | No-minal speed | Nominal torque | Min starting torque | Stall torque | Max adm torque | Air consumption | Supply/Exhaust | Min pipe | Weight | ATEX        | Rotation | Vanne Option | Order Code           |
|-----------|------------|----------------|----------------|---------------------|--------------|----------------|-----------------|----------------|----------|--------|-------------|----------|--------------|----------------------|
| [watt]    | [rpm]      | [rpm]          | [Nm]           | [Nm]                | [Nm]         | [Nm]           | [m3/min]        |                | [mm]     | [kg]   |             |          |              |                      |
| 1600      | 9600       | 4800           | 3,10           | 4,70                | 6,05         | *              | 1,60            | G1/2   G3/4    | 19   19  | 5,90   | T6   T80°C  | L & R    | 0, C, Z      | <b>P1VAS160A0960</b> |
| 1600      | 2500       | 1250           | 12,20          | 18,30               | 23,20        | *              | 1,60            | G1/2   G3/4    | 19   19  | 6,10   | T3   T195°C | L & R    | 0, C, Z      | <b>P1VAS160A0250</b> |
| 1600      | 1200       | 600            | 25,40          | 38,20               | 48,30        | *              | 1,60            | G1/2   G3/4    | 19   19  | 6,10   | T4   T130°C | L & R    | 0, C, Z      | <b>P1VAS160A0120</b> |
| 1600      | 700        | 350            | 43,60          | 65,40               | 82,90        | *              | 1,60            | G1/2   G3/4    | 19   19  | 6,70   | T4   T130°C | L & R    | 0, C, Z      | <b>P1VAS160A0070</b> |
| 1600      | 320        | 160            | 95,40          | 143,20              | 181,40       | *              | 1,60            | G1/2   G3/4    | 19   19  | 6,70   | T4   T130°C | L & R    | 0, C, Z      | <b>P1VAS160A0032</b> |
| 700       | 200        | 100            | 66,90          | 100,00              | 125,00       | *              | 1,60            | G1/2   G3/4    | 19   19  | 6,70   | T6   T80°C  | L & R    | 0, C, Z      | <b>P1VAS160A0020</b> |
| 1600      | 160        | 80             | 191,00         | **                  | **           | 220,00         | 1,60            | G1/2   G3/4    | 19   19  | 8,00   | T6   T80°C  | L & R    | 0, C, Z      | <b>P1VAS160A0016</b> |

Max. adm torque is restriction from the gear box Details on page 15

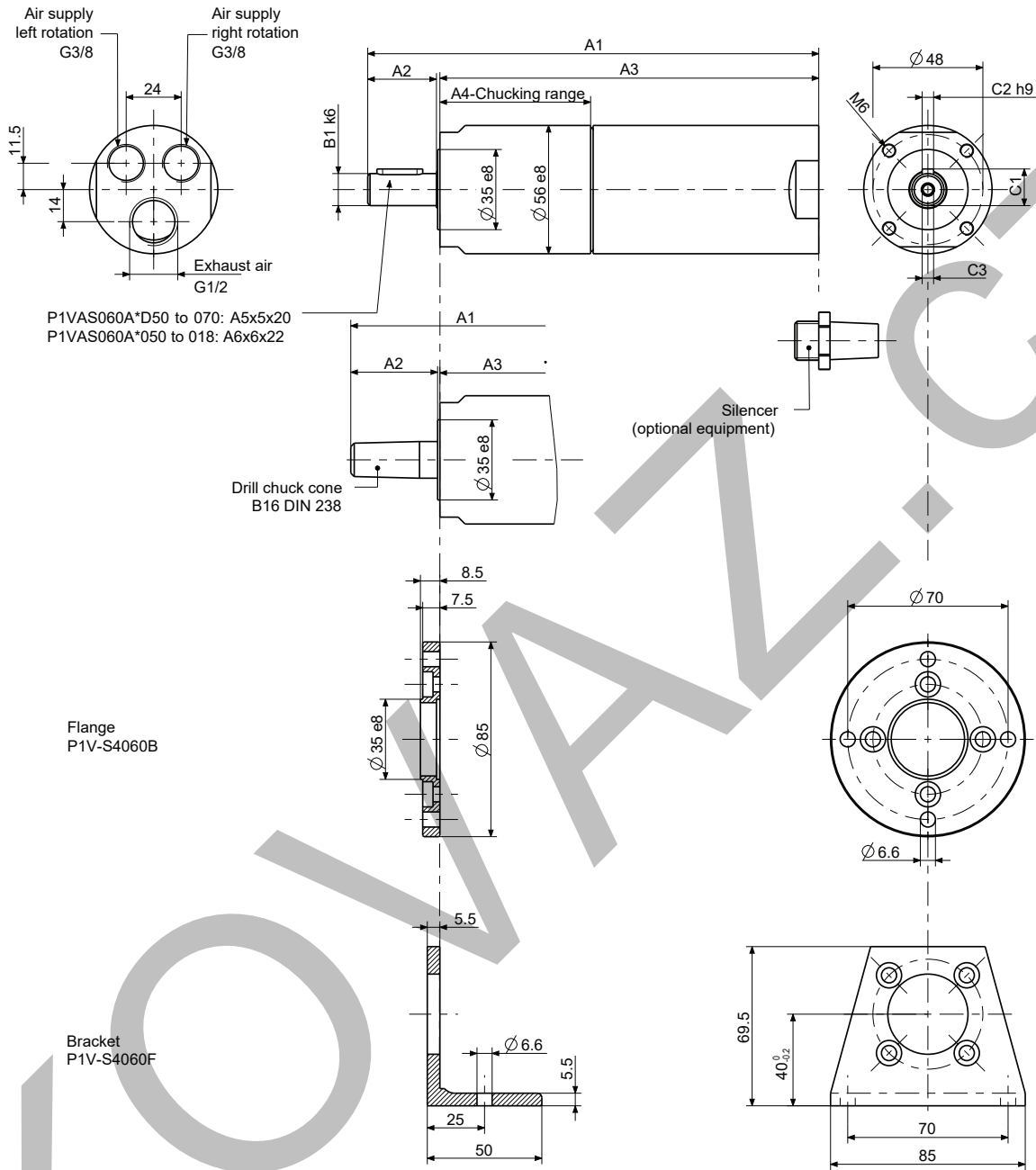
\* Maximum admissible torque

No values as these motors can not achieve the maximum gear box torque. Stall torque is the max they can achieve.

\*\* Nominal speed, nominal torque, min starting torque, stall torque

No values as the motors can not reach these conditions, otherwise the maximum torque of the gearboxes will be exceeded.

**Dimensions [mm] 600 watts**



**Dimension [mm] 600 watts**

| A1  | A2   | A3    | A4   | B1 | C1   | C2 | C3    | Order code           |                      |                      |                      |
|-----|------|-------|------|----|------|----|-------|----------------------|----------------------|----------------------|----------------------|
| 197 | 30,5 | 165,5 | 66   | 14 | 16   | 5  | M5x12 | <b>P1VAS060A*D50</b> | <b>P1VAS060A*400</b> | <b>P1VAS060A*300</b> | <b>P1VAS060A*200</b> |
| 215 | 30,5 | 183,5 | 84   | 14 | 16   | 5  | M5x12 | <b>P1VAS060A*550</b> | <b>P1VAS060A*070</b> |                      |                      |
| 217 | 35   | 180   | 80,5 | 19 | 21,5 | 6  | M6x12 | <b>P1VAS060A*050</b> | <b>P1VAS060A*034</b> | <b>P1VAS060A*018</b> |                      |

\* 0, C, Z