

## P1VAS Stainless Steel Vane Air Motors with Integrated Planetary Gear boxes

**Note:** All technical data are based on a working pressure of 6 bar and with oil lubrication. With oil free operation performances are reduced by 10 to 20%. Speed tolerance accuracy in between clock and anti clockwise directions is  $\pm 10\%$ .

**Note!** Inlet and exhaust air flows are critical for reaching the best performances.



### Data for Reversible Air Motor Power 200 watts, with Keyed Shaft

Max power	Free speed	No-minal speed	Nominal torque	Min starting torque	Stall torque	Max adm torque	Air consumption	Supply/Exhaust	Min pipe	Weight	ATEX	Rotation	Vanne Option	Order Code
[watt]	[rpm]	[rpm]	[Nm]	[Nm]	[Nm]	[Nm]	[m3/min]		[mm]	[kg]				
200	16000	8000	0,24	0,35	0,45	*	0,37	G1/8	G1/4 10   10	0,70	T6   T80°C	L & R	0, C, Z	<b>P1VAS020A0G00</b>
200	4600	2300	0,8	1,20	1,50	*	0,37	G1/8	G1/4 10   10	0,75	T4   T130°C	L & R	0, C, Z	<b>P1VAS020A0460</b>
200	2400	1200	1,6	2,40	3,00	*	0,37	G1/8	G1/4 10   10	0,75	T4   T130°C	L & R	0, C, Z	<b>P1VAS020A0240</b>
200	1400	700	2,7	4,10	5,10	*	0,37	G1/8	G1/4 10   10	0,85	T4   T130°C	L & R	0, C, Z	<b>P1VAS020A0140</b>
200	700	350	5,4	8,20	10,30	*	0,37	G1/8	G1/4 10   10	0,85	T6   T80°C	L & R	0, C, Z	<b>P1VAS020A0070</b>
200	360	180	10,6	15,90	**	20,00	0,37	G1/8	G1/4 10   10	0,85	T6   T80°C	L & R	0, C, Z	<b>P1VAS020A0036</b>
100	180	90	10,5	15,00	**	20,00	0,27	G1/8	G1/4 10   10	0,85	T6   T80°C	L & R	0, C, Z	<b>P1VAS020A0018</b>
180	50	**	**	**	**	20,00	0,34	G1/8	G1/4 10   10	0,95	T6   T80°C	L & R	0, C, Z	<b>P1VAS020A0005</b>

### With Treaded Shaft

200	16000	8000	0,24	0,35	0,45	*	0,37	G1/8	G1/4 10   10	0,70	T6   T80°C	-	0, C, Z	<b>P1VAS020D0G00</b>
200	4600	2300	0,8	1,20	1,50	*	0,37	G1/8	G1/4 10   10	0,75	T4   T130°C	-	0, C, Z	<b>P1VAS020D0460</b>
200	2400	1200	1,6	2,40	3,00	*	0,37	G1/8	G1/4 10   10	0,75	T4   T130°C	-	0, C, Z	<b>P1VAS020D0240</b>
200	1400	700	2,7	4,10	5,10	*	0,37	G1/8	G1/4 10   10	0,85	T4   T130°C	-	0, C, Z	<b>P1VAS020D0140</b>
200	700	350	5,4	8,20	10,30	*	0,37	G1/8	G1/4 10   10	0,85	T6   T80°C	-	0, C, Z	<b>P1VAS020D0070</b>
200	360	180	10,6	15,90	**	20,00	0,37	G1/8	G1/4 10   10	0,85	T6   T80°C	-	0, C, Z	<b>P1VAS020D0036</b>
100	180	90	10,5	15,00	**	20,00	0,27	G1/8	G1/4 10   10	0,85	T6   T80°C	-	0, C, Z	<b>P1VAS020D0018</b>
180	50	**	**	**	**	20,00	0,34	G1/8	G1/4 10   10	0,95	T6   T80°C	-	0, C, Z	<b>P1VAS020D0005</b>

Max. adm torque is restriction from the gear box Details on page 15

### Data for Reversible Air Motor Power 300 watts, with Keyed Shaft

Max power	Free speed	No-minal speed	Nominal torque	Min starting torque	Stall torque	Max adm torque	Air consumption	Supply/Exhaust	Min pipe	Weight	ATEX	Rotation	Vanne Option	Order Code
[watt]	[rpm]	[rpm]	[Nm]	[Nm]	[Nm]	[Nm]	[m3/min]		[mm]	[kg]				
300	14500	7250	0,40	0,60	0,76	*	0,47	G1/8	G1/4 10   10	0,70	T6   T80°C	L & R	0, C, Z	<b>P1VAS030A0E50</b>
300	4600	2300	1,20	1,90	2,20	*	0,47	G1/8	G1/4 10   10	0,75	T4   T130°C	L & R	0, C, Z	<b>P1VAS030A0460</b>
300	2400	1200	2,40	3,60	4,50	*	0,47	G1/8	G1/4 10   10	0,75	T4   T130°C	L & R	0, C, Z	<b>P1VAS030A0240</b>
300	1230	615	4,65	6,95	8,80	*	0,47	G1/8	G1/4 10   10	0,85	T4   T130°C	L & R	0, C, Z	<b>P1VAS030A0123</b>
300	700	350	8,15	12,25	15,50	*	0,47	G1/8	G1/4 10   10	0,85	T6   T80°C	L & R	0, C, Z	<b>P1VAS030A0070</b>
300	360	180	15,90	23,80	30,20	*	0,47	G1/8	G1/4 10   10	0,85	T6   T80°C	L & R	0, C, Z	<b>P1VAS030A0036</b>
130	180	90	13,80	21,00	26,20	*	0,28	G1/8	G1/4 10   10	0,85	T6   T80°C	L & R	0, C, Z	<b>P1VAS030A0018</b>
300	100	**	**	**	**	36,00	0,47	G1/8	G1/4 10   10	0,95	T6   T80°C	L & R	0, C, Z	<b>P1VAS030A0010</b>
280	50	**	**	**	**	36,00	0,47	G1/4	G1/4 10   10	1,25	T6   T80°C	L & R	0, C, Z	<b>P1VAS030A0005</b>

### With Treaded Shaft

300	14500	7250	0,40	0,60	0,76	*	0,47	G1/4	G1/4 10   10	1,00	T6   T80°C	-	0, C, Z	<b>P1VAS030D0E50</b>
300	4600	2300	1,20	1,90	2,20	*	0,47	G1/4	G1/4 10   10	1,05	T3   T195°C	-	0, C, Z	<b>P1VAS030D0460</b>
300	2400	1200	2,40	3,60	4,50	*	0,47	G1/4	G1/4 10   10	1,05	T4   T130°C	-	0, C, Z	<b>P1VAS030D0240</b>
300	1230	615	4,65	6,95	8,80	*	0,47	G1/4	G1/4 10   10	1,10	T4   T130°C	-	0, C, Z	<b>P1VAS030D0123</b>
300	700	350	8,15	12,25	15,50	*	0,47	G1/4	G1/4 10   10	1,15	T6   T80°C	-	0, C, Z	<b>P1VAS030D0070</b>
300	360	180	15,90	23,80	30,20	*	0,47	G1/4	G1/4 10   10	1,15	T6   T80°C	-	0, C, Z	<b>P1VAS030D0036</b>
130	180	90	13,80	21,00	26,20	*	0,28	G1/4	G1/4 10   10	1,15	T6   T80°C	-	0, C, Z	<b>P1VAS030D0018</b>
300	100	**	**	**	**	36,00	0,47	G1/4	G1/4 10   10	1,25	T6   T80°C	-	0, C, Z	<b>P1VAS030D0010</b>
280	50	**	**	**	**	36,00	0,47	G1/4	G1/4 10   10	1,25	T6   T80°C	-	0, C, Z	<b>P1VAS030D0005</b>

Max. adm torque is restriction from the gear box Details on page 15

### Note:

air motor rotation with threaded shaft may be reversed, but when operated anticlockwise, there is a risk that the driven unit may disconnect if it is not locked properly.

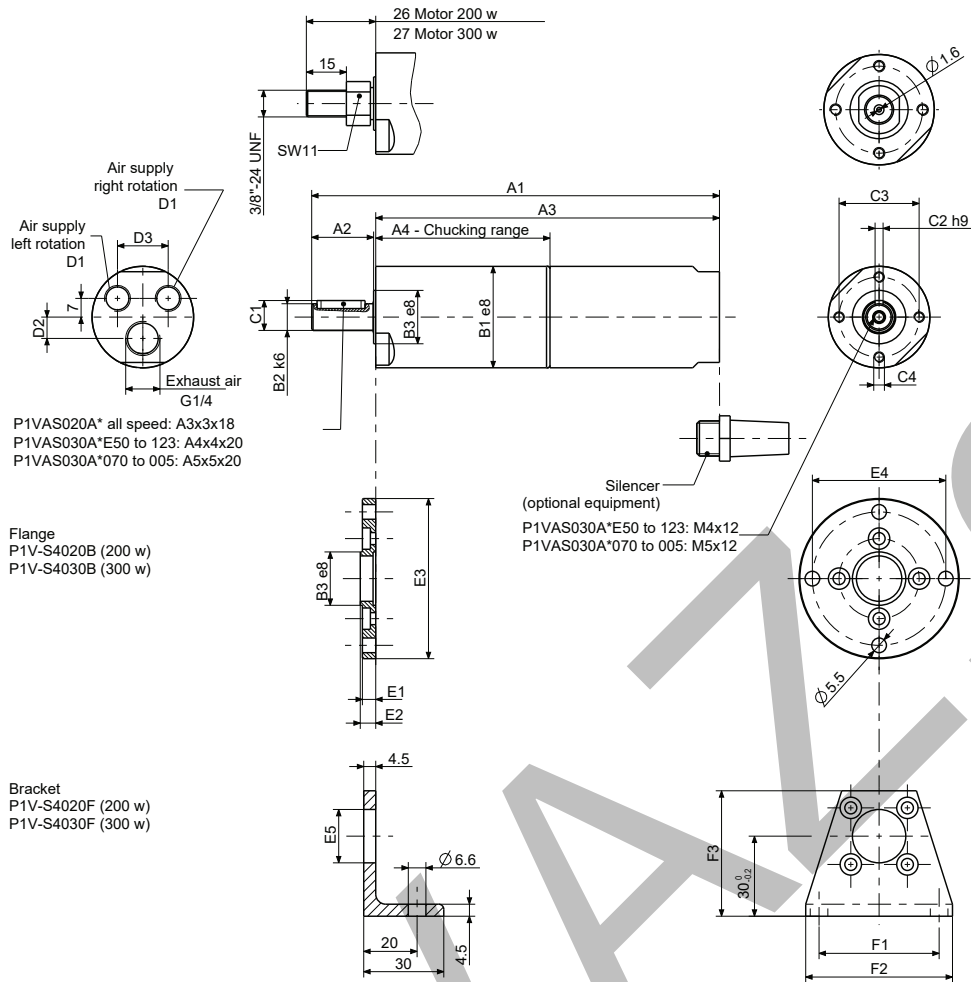
\* Maximum admissible torque

No values as these motors can not achieve the maximum gear box torque. Stall torque is the max they can achieve.

\*\*nominal speed, nominal torque, min starting torque, stall torque

No values as the motors can not reach these conditions, otherwise the maximum torque of the gearboxes will be exceeded.

**Dimensions [mm] 200, 300 watts**



**Dimension [mm] 200 watts**

A1	A2	A3	A4	B1	B2	B3	C1	C2	C3	C4	Order code			
152,5	23	128,5	65	38	10	20	11,2	3	30	M4	<b>P1VAS020A*G00</b>	<b>P1VAS020A*460</b>	<b>P1VAS020A*240</b>	
168	23	144,5	81	38	10	20	11,2	3	30	M4	<b>P1VAS020A*140</b>	<b>P1VAS020A*070</b>	<b>P1VAS020A*036</b>	<b>P1VAS020A*018</b>
184,5	23	160,5	97	38	10	20	11,2	3	30	M4	<b>P1VAS020A*005</b>			

D1	D2	D3	B3	E1	E2	E3	E4	E5	F1	F2	F3	Order code			
G1/8	8	19	20	5	5,8	60	50	17	45	55	47	<b>P1VAS020A*G00</b>	<b>P1VAS020A*460</b>	<b>P1VAS020A*240</b>	
G1/8	8	19	20	5	5,8	60	50	17	45	55	47	<b>P1VAS020A*140</b>	<b>P1VAS020A*070</b>	<b>P1VAS020A*036</b>	<b>P1VAS020A*018</b>
G1/8	8	19	20	5	5,8	60	50	17	45	55	47	<b>P1VAS020A*005</b>			

**Dimension [mm] 300 watts**

A1	A2	A3	A4	B1	B2	B3	C1	C2	C3	C4	Order code			
171	27	143	66	42	12	24	13,5	4	34	M5	<b>P1VAS030A*E50</b>	<b>P1VAS030A*460</b>	<b>P1VAS030A*240</b>	
187	27	159	83	42	12	24	13,5	4	34	M5	<b>P1VAS030A*123</b>			
191	30	159	83	42	14	24	16	5	34	M5	<b>P1VAS030A*070</b>	<b>P1VAS030A*036</b>	<b>P1VAS030A*018</b>	
196	30	164	83	42	14	24	16	5	34	M5	<b>P1VAS030A*010</b>	<b>P1VAS030A*005</b>		

D1	D2	D3	B3	E1	E2	E3	E4	E5	F1	F2	F3	Order code			
G1/4	11	20	20	5	6,8	60	50	17	45	55	47	<b>P1VAS030A*E50</b>	<b>P1VAS030A*460</b>	<b>P1VAS030A*240</b>	
G1/4	11	20	20	5	6,8	60	50	17	45	55	47	<b>P1VAS030A*123</b>			
G1/4	11	20	24	6	6,8	65	55	21	50	60	48	<b>P1VAS030A*070</b>	<b>P1VAS030A*036</b>	<b>P1VAS030A*018</b>	
G1/4	11	20	24	6	6,8	65	55	21	50	60	48	<b>P1VAS030A*010</b>	<b>P1VAS030A*005</b>		

\* 0, C, Z