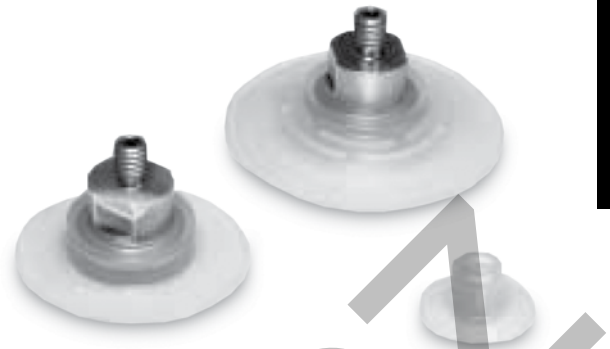


The PAG Cups are ideal for paper feeding, plastic bags and foil. The choice between the 20A & 20B, 30 & 30B is application dependent. The 20A & 30B cups have a thinner lip design than the 20B & 30 cups. This thinner lip design is more suited to products with micron thickness.



Features

- Bellows design for level compensation within restricted clearances
- Sheet separation for flexible and stacked products
- Soft seal lip for flexible products
- 10mm to 50mm diameters

Styles

- PATM Series Male Thread Connector
- PATK Series Barbed Bulkhead
- PAYK Series 90° Barbed Adapter

Specifications

Cup material	Nitrile	Nitrile ESD*	Silicon	Silicon ESD*	Urethane
Material code	NBR	NBRE	SI	SIE	U
Operating temperature (°C)	-20° to +120°	-30° to +120°	-60° to +250°	-60° to +250°	-30° to +120°
Color	Black	Black / Blue Dot	White	Black / Red Dot	Blue
Hardness, shore A (°Sh)	55 ±5	70 ±5	55 ±5	55 ±5	55 ±5
Electrical resistance (Ωm)	—	800 to 1000	—	800 to 1000	—

* ESD: Electric Static Dissipative Material

How to order

Cups Assemblies and replacement cups are specified by Cup Diameter and Material. Standard Nitrile and silicon are listed on the following pages. To specify an alternative material, replace the cup material with alternative cup material code.

Example: To specify a cup assembly with Urethane (U), replace (NBR) with (U) in the part number. PFTM-20B-NBR-G1 becomes PFTM-20B-U-G1. Inquire with factory for availability.

Application guide

Thin – Smooth Surfaces



Flat surface,
thin section

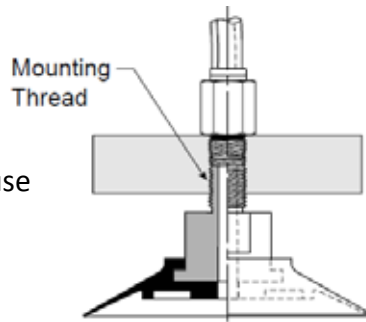
PATM Series Male Thread Connector

Simple male connection for low profile positions secured to a plate or bracket.
 Fitting Material: Aluminium.

Installation

Note:

When installing cup assemblies, use a sealant material to secure the assembly and prevent vacuum leakage.



Cup Diameter (mm)	Vacuum Port	Complete Assembly Nitrile (NBR)	Replacement Cup Nitrile (NBR)	Complete Assembly Silicon (SI)	Replacement Cup Silicon (SI)	Replacement cup fitting
10	M5	PATM-10A-NBR-M5	PAG-10A-NBR	PATM-10A-SI-M5	PAG-10A-SI	FTM-5A-M5
15	M5	PATM-15A-NBR-M5	PAG-15A-NBR	PATM-15A-SI-M5	PAG-15A-SI	FTM-5A-M5
20	M5	PATM-20A-NBR-M5	PAG-20A-NBR	PATM-20A-SI-M5	PAG-20A-SI	FTM-5A-M5
25*	M6		PAG-25-NBR		PAG-25-SI	
30*	M6		PAG-30-NBR		PAG-30-SI	
40*	M6		PAG-40-NBR		PAG-40-SI	
50*	M6		PAG-50-NBR		PAG-50-SI	

* : From diameter 25 to 50, the PAG cup include the cup fitting

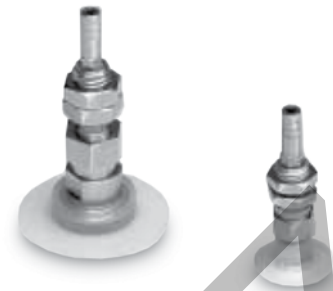
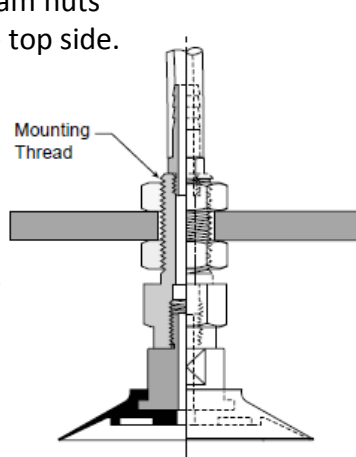
PATK Series Barbed Bulkhead

Top stem connectors secured with jam nuts and allow tubing connections at the top side.
 Nickel plated brass materials.

Installation

Note:

When installing cup assemblies, use a sealant material to secure the assembly and prevent vacuum leakage.



Cup Diameter (mm)	Vacuum Port	Complete Assembly Nitrile (NBR)	Replacement Cup Nitrile (NBR)	Complete Assembly Silicon (SI)	Replacement Cup Silicon (SI)	Replacement cup fitting
10	Bard	PATK-10A-NBR	PAG-10A-NBR	PATK-10A-SI	PAG-10A-SI	FTK-5A
15	Bard	PATK-15A-NBR	PAG-15A-NBR	PATK-15A-SI	PAG-15A-SI	FTK-5A
20	Bard	PATK-20A-NBR	PAG-20A-NBR	PATK-20A-SI	PAG-20A-SI	FTK-5A
25	Bard	PATK-25-NBR	PAG-25-NBR	PATK-25-SI	PAG-25-SI	FTK-20B
30	Bard	PATK-30-NBR	PAG-30-NBR	PATK-30-SI	PAG-30-SI	FTK-20B
40	Bard	PATK-40-NBR	PAG-40-NBR	PATK-40-SI	PAG-40-SI	FTK-20B
50	Bard	PATK-50-NBR	PAG-50-NBR	PATK-50-SI	PAG-50-SI	FTK-20B

PAYK Series 90° Barbed Adapte

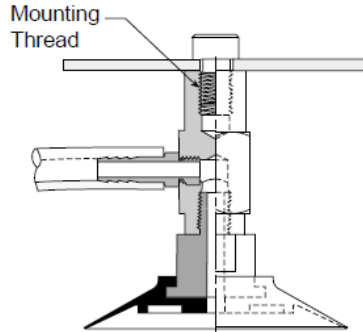
Side stem connectors allow you to secure the stem with a bolt through a plate or “L” bracket to allow the tube connection from the side port. Nickel plated brass materials.

A

Installation

Note:

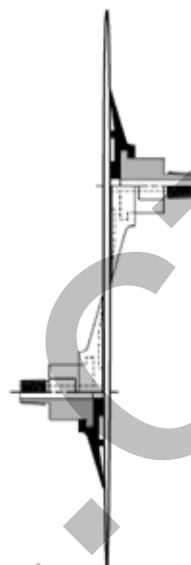
When installing cup assemblies, use a sealant material to secure the assembly and prevent vacuum leakage.



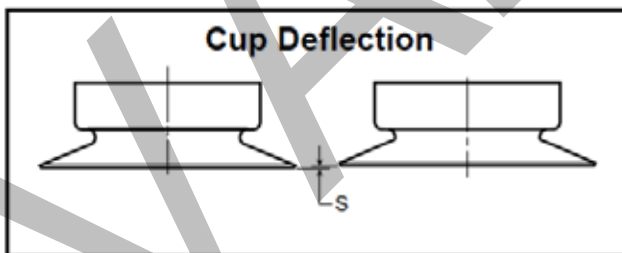
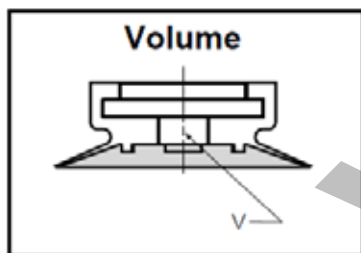
Cup Diameter (mm)	Vacuum Port	Complete Assembly Nitrile (NBR)	Replacement Cup Nitrile (NBR)	Complete Assembly Silicon (SI)	Replacement Cup Silicon (SI)	Replacement cup fitting
10	Bard	PAYK-10A-NBR	PAG-10A-NBR	PAYK-10A-SI	PAG-10A-SI	FYK-5A
15	Bard	PAYK-15A-NBR	PAG-15A-NBR	PAYK-15A-SI	PAG-15A-SI	FYK-5A
20	Bard	PAYK-20A-NBR	PAG-20A-NBR	PAYK-20A-SI	PAG-20A-SI	FYK-5A
25	Bard	PAYK-25-NBR	PAG-25-NBR	PAYK-25-SI	PAG-25-SI	FYK-20B
30	Bard	PAYK-30-NBR	PAG-30-NBR	PAYK-30-SI	PAG-30-SI	FYK-20B
40	Bard	PAYK-40-NBR	PAG-40-NBR	PAYK-40-SI	PAG-40-SI	FYK-20B
50	Bard	PAYK-50-NBR	PAG-50-NBR	PAYK-50-SI	PAG-50-SI	FYK-20B

Applications

- Products With Smooth Surfaces
- Products With Micron Thickness
- When Opening Plastic or Paper Bags, Offset Cups



Main data for flat PAG cups



Model Number	Cup Diameter [mm]	Area [cm ²]	Cup Deflection [S] [mm]
PAG-10A-*	10	0,79	0,6
PAG-15A-*	15	1,77	0,9
PAG-20A-*	20	3,14	1,2
PAG-25-*	25	4,91	1,5
PAG-30-*	30	7,07	1,8
PAG-40-*	40	12,60	2,4
PAG-50-*	40	19,60	3,0

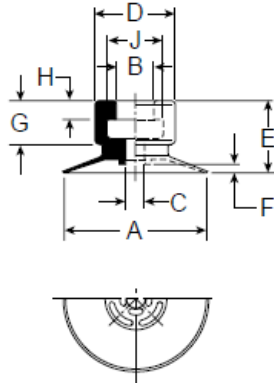
Millimeter
 * Cup Material



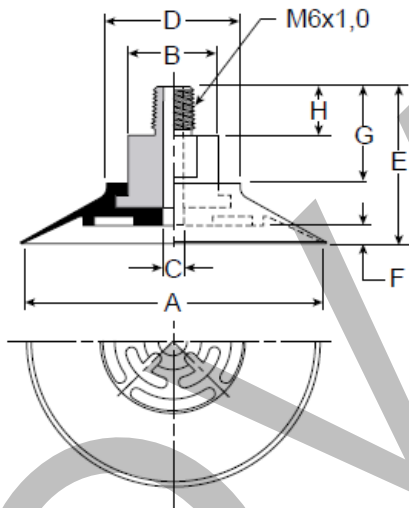
PAG Series Replacement Cup Dimensions

A

**PAG-10A and
 PAG-20A**



**PAG-25 thru
 PAG-50**



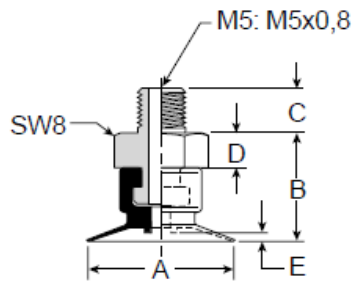
Model Number	ØA	ØB	ØC	ØD	E	F	G	H	J
PAG-10A-*	10	4	2	8,5	7,5	0,6	4	2	6
PAG-15A-*	15	4	2	8,5	7,5	0,9	4	2	6
PAG-20A-*	20	4	2	9	10	1,2	4	2	6
PAG-25-*	25	26	3	22	26	1,5	16	8	—
PAG-30-*	30	26	3	22	26	1,8	16	8	—
PAG-40-*	40	26	3	22	26	2,4	16	8	—
PAG-50-*	50	26	3	22	26	3	16	8	—

Millimeter
 * Cup Material

A

Dimensions

**PATM-10A thru
 PATM-20A**



Model Number	ØA	B	C	D	E	F	G	H
PATM-10A-*†	10	11	4,5	3,5	0,6	—	—	—
PATM-15A-*†	15	11	4,5	3,5	0,9	—	—	—
PATM-20A-*†	20	13,5	4,5	3,5	1,2	—	—	—

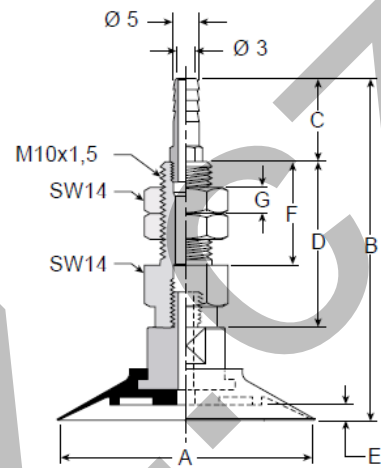
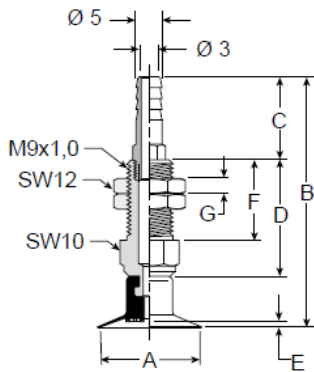
Millimeter
 * Cup Material
 † Thread Size

Dimensions

A

PATK-10A thru
 PATK-20A

PATK-25 thru
 PATK-50

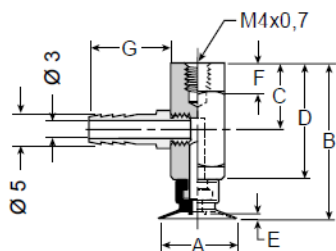


Model Number	ØA	B	C	D	E	F	G
PATK-10A-*	10	46	16	22,5	0,6	15,5	3
PATK-15A-*	15	46	16	22,5	0,9	15,5	3
PATK-20A-*	20	48,5	16	22,5	1,2	15,5	3
PATK-25-*	25	66,2	16	32,2	1,5	20	5
PATK-30-*	30	66,2	16	32,2	1,8	20	5
PATK-40-*	40	66,2	16	32,2	2,4	20	5
PATK-50-*	50	66,2	16	32,2	3	20	5

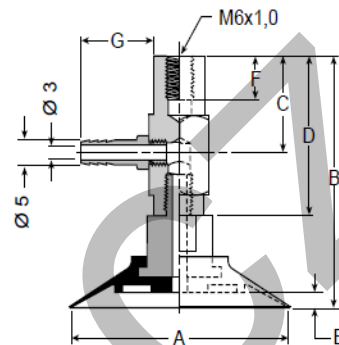
Millimeter
 * Cup Material

Dimensions

PAYK-10A thru
 PAYK-20A



PAYK-25 thru
 PAYK-50



A

Model Number	ØA	B	C	D	E	F	G
PAYK-10A-*	10	30	13	22,5	0,6	6	16
PAYK-15A-*	15	30	13	22,5	0,9	6	16
PAYK-20A-*	20	32,4	20	22,5	1,2	6	16
PAYK-25-*	25	50	20	32	1,5	8	16
PAYK-30-*	30	50	20	32	1,8	8	16
PAYK-40-*	40	50	20	32	2,4	8	16
PAYK-50-*	50	50	20	32	3	8	16

Millimeter
 * Cup Material