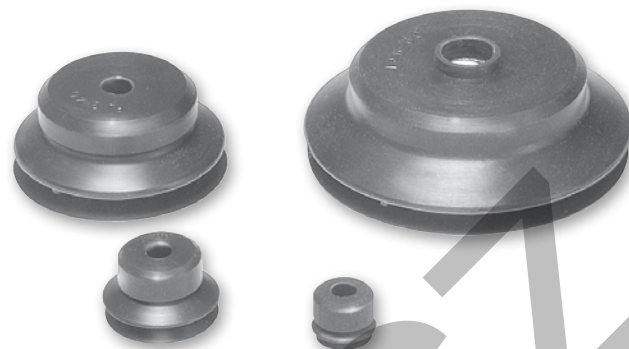


Versatile bellow cup design provides increased sealing lip and level compensation for products with irregular, smooth, curved surfaces, or flexible sheets.

The short stroke bellow suction cup has an extra thin sealing edge and shorter stroke versus the traditional bellows for faster response. The cups are good for corrugated and smooth surfaces.

Features

- Short bellows for fast response
- More lip seal contact for corrugated, textured surfaces
- Soft sealing lip
- 6mm to 80mm



Styles

- PJTM series male thread connector
- PJTF series female thread connector
- PJTK series barbed bulkhead
- PJYK series 90° barbed adapter
- PJTYS series bulkhead level compensator

Specifications

Cup material	Nitrile	Nitrile ESD*	Silicon	Silicon ESD*
Material code	NBR	NBRE	SI	SIE
Operating temperature (°C)	-20° to +120°	-30° to +120°	-60° to +250°	-60° to +250°
Color	Black	Black / Blue Dot	White	Black / Red Dot
Hardness, shore A (°Sh)	55 ±5	70 ±5	55 ±5	55 ±5
Electrical resistance (Ωm)	—	800 to 1000	—	800 to 1000

* ESD: Electric Static Dissipative Material

How to order

Cups assemblies and replacement cups are specified by cup diameter and material. Standard nitrile and silicon are listed on the following pages. To specify an alternative material, replace the cup material with alternative cup material code.

Example: To specify a cup assembly with silicon ESD (SIE), replace (NBR) with (SIE) in the part number. PJTM-20B-NBR-G1 becomes PJTM-20B-SIE-G1. Inquire with factory for availability.

Application guide

Short Bellows

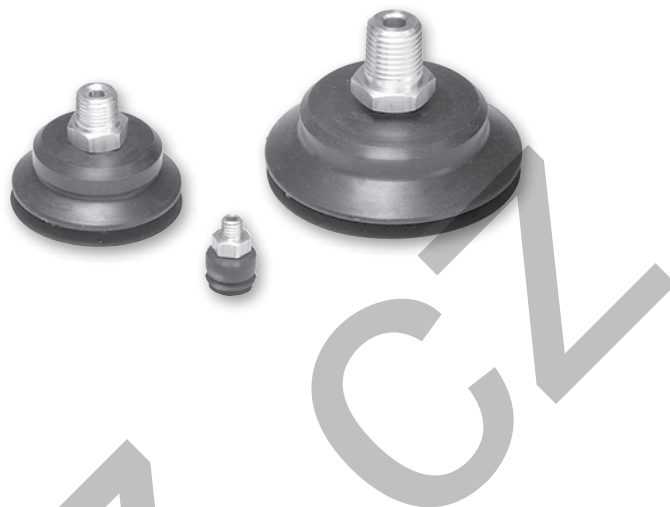
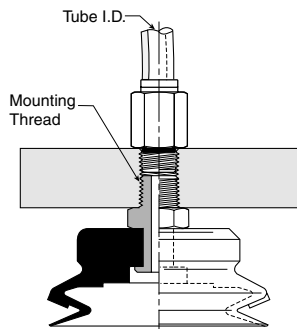
Flat surface, thin section	Flat surface, any section	Slightly bowed surface, thin section	Slightly bowed surface, any section	Bowed surface, thin section	Soft porous material, thin section	Soft porous material, any section	Metal sheet handling	Corrugated sheet handling	Not for vertical lift

PJTM Series Male Thread Connector

Simple male connection for low profile positions secured to a plate or bracket. BSPP, NPT metric threads.
 Fitting material: aluminum.

Installation

Note:
 When installing cup assemblies, use a sealant material to secure the assembly and prevent vacuum leakage.



Cup diameter (mm)	Vacuum port	Complete assembly Nitrile	Replacement cup Nitrile (NB)	Complete assembly Silicon (SI)	Replacement cup Silicon (SI)	Replacement cup fitting
6	M5	PJTM-6-NBR-M5	PJG-6-NBR	PJTM-6-SI-M5	PJG-6-SI	FTM-5A-M5
6	1/8 BSPP	PJTM-6-NBR-G1	PJG-6-NBR	PJTM-6-SI-G1	PJG-6-SI	FTM-5A-G1
8	M5	PJTM-8-NBR-M5	PJG-8-NBR	PJTM-8-SI-M5	PJG-8-SI	FTM-5A-M5
8	1/8 BSPP	PJTM-8-NBR-G1	PJG-8-NBR	PJTM-8-SI-G1	PJG-8-SI	FTM-5A-G1
10	M5	PJTM-10-NBR-M5	PJG-10-NBR	PJTM-10-SI-M5	PJG-10-SI	TN-PF-15-M5
15	M5	PJTM-15-NBR-M5	PJG-15-NBR	PJTM-15-SI-M5	PJG-15-SI	TN-PF-15-M5
20	M5	PJTM-20-NBR-M5	PJG-20-NBR	PJTM-20-SI-M5	PJG-20-SI	TN-PF-20-M5
30	1/8 BSPP	PJTM-30-NBR-G1	PJG-30-NBR	PJTM-30-SI-G1	PJG-30-SI	FTM-20B-G1
30	1/4 BSPP	PJTM-30-NBR-G2	PJG-30-NBR	PJTM-30-SI-G2	PJG-30-SI	FTM-20B-G2
30	M10	PJTM-30-NBR-M10	PJG-30-NBR	PJTM-30-SI-M10	PJG-30-SI	FTM-20B-M10
30	1/8 NPT	PJTM-30-NBR-N1	PJG-30-NBR	PJTM-30-SI-N1	PJG-30-SI	FTM-20B-N1
40	1/8 BSPP	PJTM-40-NBR-G1	PJG-40-NBR	PJTM-40-SI-G1	PJG-40-SI	FTM-20B-G1
40	1/4 BSPP	PJTM-40-NBR-G2	PJG-40-NBR	PJTM-40-SI-G2	PJG-40-SI	FTM-20B-G2
40	M10	PJTM-40-NBR-M10	PJG-40-NBR	PJTM-40-SI-M10	PJG-40-SI	FTM-20B-M10
40	1/8 NPT	PJTM-40-NBR-N1	PJG-40-NBR	PJTM-40-SI-N1	PJG-40-SI	FTM-20B-N1
50	1/8 BSPP	PJTM-50-NBR-G1	PJG-50-NBR	PJTM-50-SI-G1	PJG-50-SI	FTM-50-G1
50	1/4 BSPP	PJTM-50-NBR-G2	PJG-50-NBR	PJTM-50-SI-G2	PJG-50-SI	FTM-50-G2
50	1/8 NPT	PJTM-50-NBR-N1	PJG-50-NBR	PJTM-50-SI-N1	PJG-50-SI	FTM-50-N1
60	1/4 BSPP	PJTM-60-NBR-G2	PJG-60-NBR	PJTM-60-SI-G2	PJG-60-SI	FTM-60-G2
60	M10	PJTM-60-NBR-M10	PJG-60-NBR	PJTM-60-SI-M10	PJG-60-SI	FTM-60-M10
60	1/4 NPT	PJTM-60-NBR-N2	PJG-60-NBR	PJTM-60-SI-N2	PJG-60-SI	FTM-60-N2
80	1/4 BSPP	PJTM-80-NBR-G2	PJG-80-NBR	PJTM-80-SI-G2	PJG-80-SI	FTM-60-G2
80	M10	PJTM-80-NBR-M10	PJG-80-NBR	PJTM-80-SI-M10	PJG-80-SI	FTM-60-M10
80	1/4 NPT	PJTM-80-NBR-N2	PJG-80-NBR	PJTM-80-SI-N2	PJG-80-SI	FTM-60-N2

PJTF Series Female Thread Connector

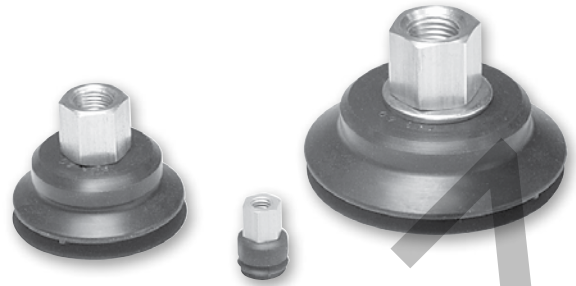
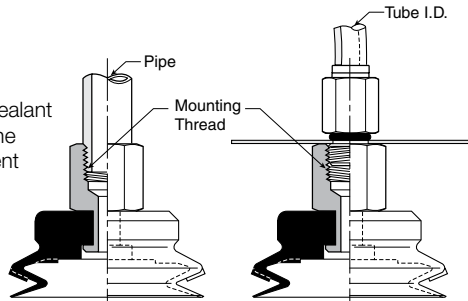
Simple female connection for low profile positions secured to a plate or bracket. BSPP, NPT metric threads.

Fitting material: aluminum.

Installation

Note:

When installing cup assemblies, use a sealant material to secure the assembly and prevent vacuum leakage.



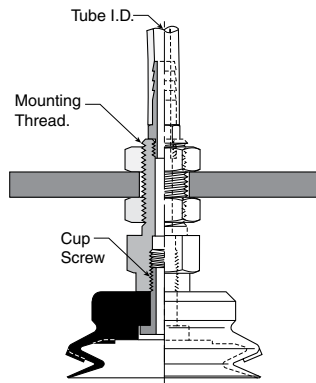
Cup diameter (mm)	Vacuum port	Complete assembly Nitrile	Replacement cup Nitrile (NB)	Complete assembly Silicon (SI)	Replacement cup Silicon (SI)	Replacement cup fitting
6	M5	PJTF-6-NBR-M5	PJG-6-NBR	PJTF-6-SI-M5	PJG-6-SI	FTF-5A-M5
6	1/8 BSPP	PJTF-6-NBR-G1	PJG-6-NBR	PJTF-6-SI-G1	PJG-6-SI	FTF-5A-G1
8	M5	PJTF-8-NBR-M5	PJG-8-NBR	PJTF-8-SI-M5	PJG-8-SI	FTF-5A-M5
8	1/8 BSPP	PJTF-8-NBR-G1	PJG-8-NBR	PJTF-8-SI-G1	PJG-8-SI	FTF-5A-G1
10	M5	PJTF-10-NBR-M5	PJG-10-NBR	PJTF-10-SI-M5	PJG-10-SI	FTF-5A-M5
10	1/8 BSPP	PJTF-10-NBR-G1	PJG-10-NBR	PJTF-10-SI-G1	PJG-10-SI	FTF-5A-G1
15	M5	PJTF-15-NBR-M5	PJG-15-NBR	PJTF-15-SI-M5	PJG-15-SI	FTF-5A-M5
15	1/8 BSPP	PJTF-15-NBR-G1	PJG-15-NBR	PJTF-15-SI-G1	PJG-15-SI	FTF-5A-G1
30	1/8 BSPP	PJTF-30-NBR-G1	PJG-30-NBR	PJTF-30-SI-G1	PJG-30-SI	FTF-20B-G1
30	1/4 BSPP	PJTF-30-NBR-G2	PJG-30-NBR	PJTF-30-SI-G2	PJG-30-SI	FTF-20B-G2
40	1/8 BSPP	PJTF-40-NBR-G1	PJG-40-NBR	PJTF-40-SI-G1	PJG-40-SI	FTF-20B-G1
40	1/4 BSPP	PJTF-40-NBR-G2	PJG-40-NBR	PJTF-40-SI-G2	PJG-40-SI	FTF-20B-G2
50	1/8 BSPP	PJTF-50-NBR-G1	PJG-50-NBR	PJTF-50-SI-G1	PJG-50-SI	FTF-50-G1
50	1/4 BSPP	PJTF-50-NBR-G2	PJG-50-NBR	PJTF-50-SI-G2	PJG-50-SI	FTF-50-G2
60	1/4 BSPP	PJTF-60-NBR-G2	PJG-60-NBR	PJTF-60-SI-G2	PJG-60-SI	FTF-60-G2
60	1/4 NPT	PJTF-60-NBR-N2	PJG-60-NBR	PJTF-60-SI-N2	PJG-60-SI	FTF-60-N2
80	1/4 BSPP	PJTF-80-NBR-G2	PJG-80-NBR	PJTF-80-SI-G2	PJG-80-SI	FTF-60-G2
80	1/4 NPT	PJTF-80-NBR-N2	PJG-80-NBR	PJTF-80-SI-N2	PJG-80-SI	FTF-60-N2

PJTK Series Barbed Bulkhead

Top stem connectors secured with jam nuts and allow tubing connections at the top side. Fitting material: nickel plated brass.

Installation

Note:
 When installing cup assemblies, use a sealant material to secure the assembly and prevent vacuum leakage.



Cup diameter (mm)	Vacuum port	Complete assembly Nitrile	Replacement cup Nitrile (NB)	Complete assembly Silicon (SI)	Replacement cup Silicon (SI)	Replacement cup fitting
6	Barb	PJTK-6-NBR	PJG-6-NBR	PJTK-6-SI	PJG-6-SI	FTK-5A
8	Barb	PJTK-8-NBR	PJG-8-NBR	PJTK-8-SI	PJG-8-SI	FTK-5A
10	Barb	PJTK-10-NBR	PJG-10-NBR	PJTK-10-SI	PJG-10-SI	FTK-15
15	Barb	PJTK-15-NBR	PJG-15-NBR	PJTK-15-SI	PJG-15-SI	FTK-15
20	Barb	PJTK-20-NBR	PJG-20-NBR	PJTK-20-SI	PJG-20-SI	FTK-20
30	Barb	PJTK-30-NBR	PJG-30-NBR	PJTK-30-SI	PJG-30-SI	FTK-25
40	Barb	PJTK-40-NBR	PJG-40-NBR	PJTK-40-SI	PJG-40-SI	FTK-25
50	Barb	PJTK-50-NBR	PJG-50-NBR	PJTK-50-SI	PJG-50-SI	FTK-50
60	1/8 BSPP	PJTK-60-NBR-G1	PJG-60-NBR	PJTK-60-SI-G1	PJG-60-SI	FTK-60-G1
60	1/8 NPT	PJTK-60-NBR-N1	PJG-60-NBR	PJTK-60-SI-N1	PJG-60-SI	FTK-60-N1
80	1/8 BSPP	PJTK-80-NBR-G1	PJG-80-NBR	PJTK-80-SI-G1	PJG-80-SI	FTK-60-G1
80	1/8 NPT	PJTK-80-NBR-N1	PJG-80-NBR	PJTK-80-SI-N1	PJG-80-SI	FTK-60-N1

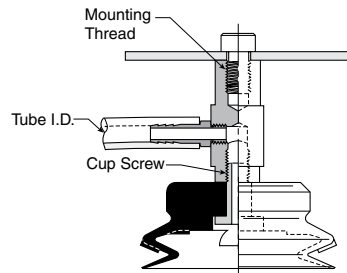
PJYK Series 90° Barbed Adapter

Side stem connectors allow you to secure the stem with a bolt through a plate or "L" bracket to allow the tube connection from the side port. Fitting material: nickel plated brass.

Installation

Note:

When installing cup assemblies, use a sealant material to secure the assembly and prevent vacuum leakage.



Cup diameter (mm)	Vacuum port	Complete assembly Nitrile	Replacement cup Nitrile (NB)	Complete assembly Silicon (SI)	Replacement cup Silicon (SI)	Replacement cup fitting
6	Barb	PJYK-6-NBR	PJG-6-NBR	PJYK-6-SI	PJG-6-SI	FYK-5A
8	Barb	PJYK-8-NBR	PJG-8-NBR	PJYK-8-SI	PJG-8-SI	FYK-5A
10	Barb	PJYK-10-NBR	PJG-10-NBR	PJYK-10-SI	PJG-10-SI	FYK-15
15	Barb	PJYK-15-NBR	PJG-15-NBR	PJYK-15-SI	PJG-15-SI	FYK-15
20	Barb	PJYK-20-NBR	PJG-20-NBR	PJYK-20-SI	PJG-20-SI	FYK-20
30	Barb	PJYK-30-NBR	PJG-30-NBR	PJYK-30-SI	PJG-30-SI	FYK-25
40	Barb	PJYK-40-NBR	PJG-40-NBR	PJYK-40-SI	PJG-40-SI	FYK-25
50	Barb	PJYK-50-NBR	PJG-50-NBR	PJYK-50-SI	PJG-50-SI	FYK-50
60	1/8 BSPP	PJYK-60-NBR-G1	PJG-60-NBR	PJYK-60-SI-G1	PJG-60-SI	FYK-60-G1
60	1/8 NPT	PJYK-60-NBR-N1	PJG-60-NBR	PJYK-60-SI-N1	PJG-60-SI	FYK-60-N1
80	1/8 BSPP	PJYK-80-NBR-G1	PJG-80-NBR	PJYK-80-SI-G1	PJG-80-SI	FYK-60-G1
80	1/8 NPT	PJYK-80-NBR-N1	PJG-80-NBR	PJYK-80-SI-N1	PJG-80-SI	FYK-60-N1

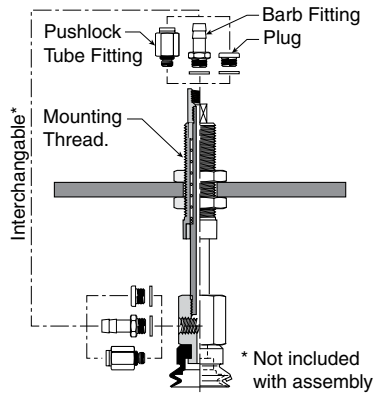
PJTYS Series Bulkhead Level Compensator

303 stainless steel construction secured with jam nuts. Spring biased compensators can absorb impacts of down-strokes and adjust for different levels of pick up points. 303 stainless corrosion resistant materials with drymet bushings increases the strength and life.

Installation

Note:

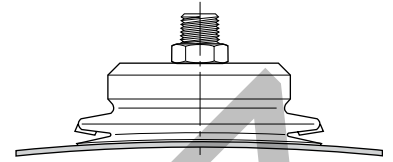
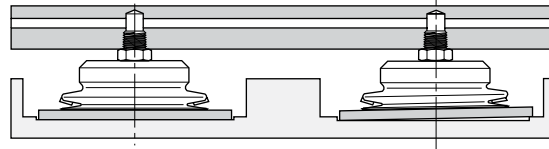
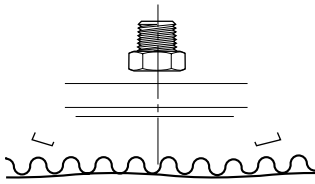
When installing cup assemblies, use a sealant material to secure the assembly and prevent vacuum leakage. Shown are interchangeable connectors & plugs for port connections.



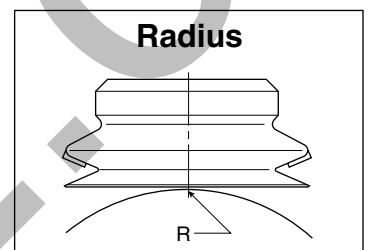
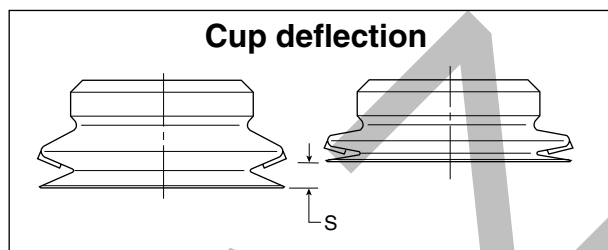
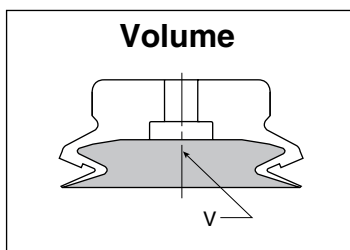
Cup dia. (mm)	Vacuum port	Stroke (mm)	Spring compression Force lbf (N)		Cup material Nitrile assembly (NBR)	Replacement cup Nitrile (NBR)	Cup material Silicon assembly (SI)	Replacement cup Silicon (SI)	Level Compensator P/N
			0%	100%					
10	M5	10	.56 (2.5)	1.2 (4.9)	PJTYS1010NBRM5	PJG-10-NBR	PJTYS1010SIM5	PJG-10-SI	JTYS-10-10-M5
10	M5	15	.67 (2.5)	1.4 (5.9)	PJTYS1015NBRM5	PJG-10-NBR	PJTYS1015SIM5	PJG-10-SI	JTYS-10-15-M5
15	M5	10	.56 (2.5)	1.2 (4.9)	PJTYS15A10NBRM5	PJG-15A-NBR	PJTYS15A10SIM5	PJG-15A-SI	JTYS-10-10-M5
15	M5	15	.67 (2.5)	1.4 (5.9)	PJTYS15A15NBRM5	PJG-15A-NBR	PJTYS15A15SIM5	PJG-15A-SI	JTYS-10-15-M5
30	M5	15	.56 (2.5)	.79 (3.4)	PJTYS3015NBRM5	PJG-30-NBR	PJTYS3015SIM5	PJG-30-SI	FTYS-20B-15-M5
30	M5	30	.67 (2.9)	1.4 (5.9)	PJTYS3030NBRM5	PJG-30-NBR	PJTYS3030SIM5	PJG-30-SI	FTYS-20B-30-M5
40	M5	15	.56 (2.5)	.79 (3.4)	PJTYS4015NBRM5	PJG-40-NBR	PJTYS4015SIM5	PJG-40-SI	FTYS-20B-15-M5
40	M5	30	.67 (2.9)	1.4 (5.9)	PJTYS4030NBRM5	PJG-40-NBR	PJTYS4030SIM5	PJG-40-SI	FTYS-20B-30-M5
50	M5	15	.56 (.25)	1.2 (4.9)	PJTYS5015NBRM5	PJG-50-NBR	PJTYS5015SIM5	PJG-50-SI	FTYS-50-15-M5
50	M5	30	.67 (2.9)	1.4 (5.9)	PJTYS5030NBRM5	PJG-50-NBR	PJTYS5030SIM5	PJG-50-SI	FTYS-50-30-M5
60	1/8 NPT	30	1.6 (6.8)	3.6 (15.6)	PJTYS6030NBRN1	PJG-60-NBR	PJTYS6030SIN1	PJG-60-SI	FTYS-60-30-G1
60	1/8 NPT	50	1.9 (8.3)	4.5 (19.6)	PJTYS6050NBRN1	PJG-60-NBR	PJTYS6050SIN1	PJG-60-SI	FTYS-60-50-G1
80	1/8 NPT	30	1.6 (6.8)	3.6 (15.6)	PJTYS8030NBRN1	PJG-80-NBR	PJTYS8030SIN1	PJG-80-SI	FTYS-60-30-G1
80	1/8 NPT	50	1.9 (8.3)	4.5 (19.6)	PJTYS8050NBRN1	PJG-80-NBR	PJTYS8050SIN1	PJG-80-SI	FTYS-60-50-G1

Applications

- High speed packaging
- Level compensation for small electronic components
- Flexible product
- Soft seal lip



Main data for short bellows PJG cups



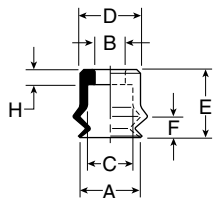
Model number	Cup diameter mm	Area cm ²	Volume (V) liters	Lifting force @ 60% (N)		Cup deflection (S) mm	Radius R mm
PJG-6-*	6	.28	0.000016	1.70	—	4.2	4.0
PJG-8-*	8	.50	0.00007	3.10	—	4.0	5.0
PJG-10-*	10	0.79	0.00017	4.80	—	3.0	6.0
PJG-15-*	15	1.77	0.0005	10.8	—	3.3	10.0
PJG-20-*	20	3.14	0.0012	19.2	—	5.5	13.0
PJG-30-*	30	7.07	0.003	43.2	—	7.0	26.0
PJG-40-*	40	12.6	0.005	76.9	—	7.2	37.0
PJG-50-*	50	19.6	0.008	120	—	9.0	41.0
PJG-60-*	60	28.3	0.020	173	—	8.0	70.0
PJG-80-*	80	50.3	0.040	308	—	9.5	100.0

*Cup material

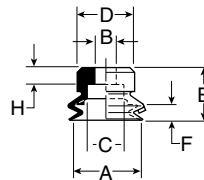
A

PJG Series Replacement Cup Dimensions

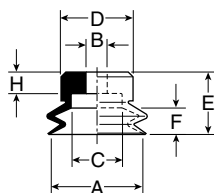
**PJG-6 and
 PJG-8**



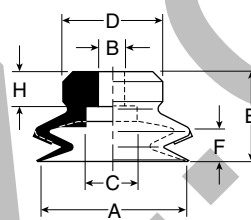
**PJG-10 and
 PJG-15**



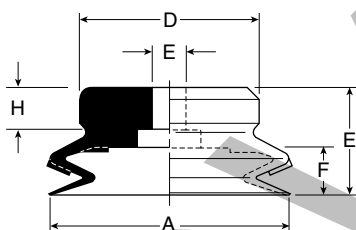
PJG-20



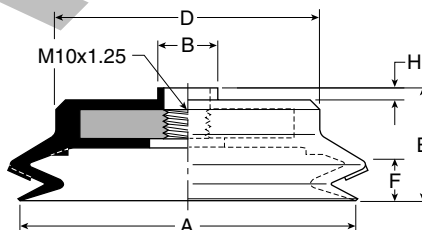
**PJG-30 thru
 PJG-40**



PJG-50



**PJG-60 thru
 PJG-80**



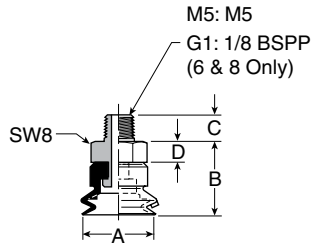
Dimensions (mm)

Model number	ØA	ØB	ØC	ØD	E	F	H
PJG-6-*	6	4	6	7.5	9	4.2	2
PJG-8-*	8	4	6	8	9	4	2
PJG-10-*	10	4.6	7.8	11	9.5	3	3.5
PJG-15-*	15	4.6	7.8	12	11	3.3	3.5
PJG-20-*	20	4.6	10.8	15	13	5.5	4.5
PJG-30-*	30	5.8	10.8	20	18	7	7
PJG-35-*	35	5.8	10.8	25	18	7	7
PJG-40-*	40	5.8	10.8	30	18	7.2	7
PJG-50-*	50	7.8	19.8	40	20	9	7
PJG-60-*	60	12.5	—	45	22.5	8	2.5
PJG-70-*	70	12.5	—	55	23.5	9.5	2.5
PJG-80-*	80	12.5	—	68	23.5	9.5	2.5

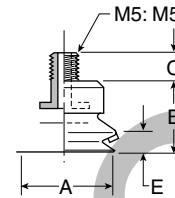
* Cup material

Dimensions

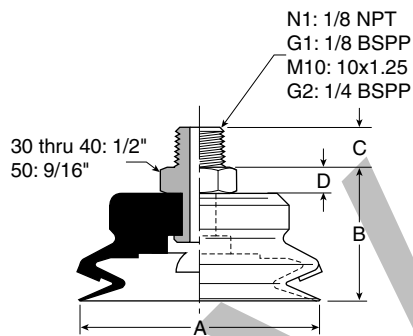
**PJTM-6 and
 PJTM-8**



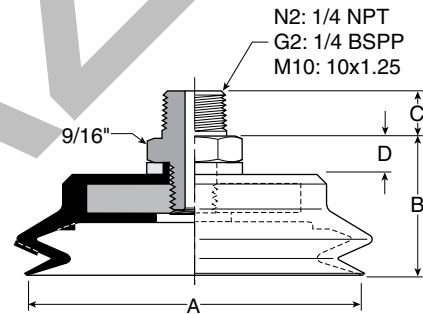
**PJTM-10 thru
 PJTM-20**



**PJTM-30 thru
 PJTM-50**



**PJTM-60 thru
 PJTM-80**



Dimensions (mm)

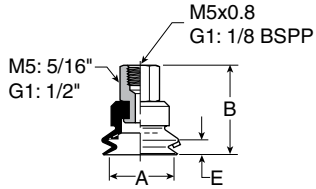
Model number	ØA	B	C (M5)	C (N1 / G1)	C (M10 / G2)	C (N2)	D
PJTM-6-*†	6	12,5	4,5	8	—	—	3,5
PJTM-8-*†	8	12,5	4,5	8	—	—	3,5
PJTM-10-*†	10	9,5	5	—	—	—	—
PJTM-15-*†	15	11	5	—	—	—	—
PJTM-20-*†	20	13	5	—	—	—	—
PJTM-30-*†	30	23	—	8	10	—	5
PJTM-40-*†	40	23	—	8	10	—	5
PJTM-50-*†	50	25	—	8	10	—	5
PJTM-60-*†	60	27	—	—	10	15	7
PJTM-80-*†	80	28	—	—	10	15	7

* Cup material
 † Thread size

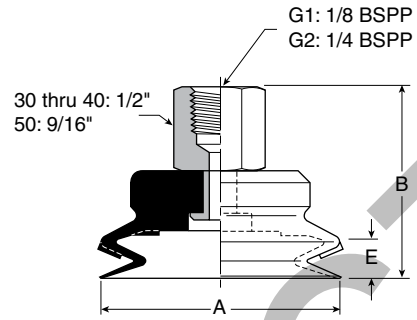


Dimensions

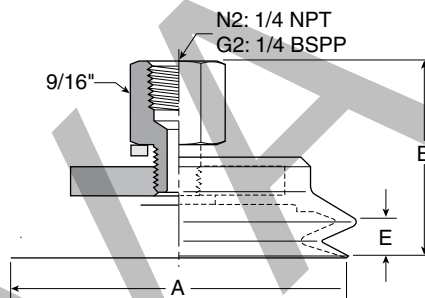
**PJTF-6 and
 PJTF-8**



**PJTF-30 thru
 PJTF-50**



**PJTF-60 thru
 PJTF-80**



Dimensions (mm)

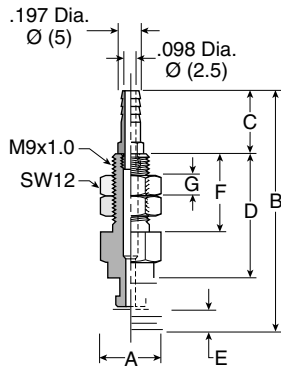
Model number	ØA	B	B (M5)	E
PJTF-6-*†	6	20	14	4
PJTF-8-*†	8	20	14	4
PJTF-10-*†	10	20	14	3
PJTF-15-*†	15	20	14	3.3
PJTF-30-*†	30	32	—	7
PJTF-40-*†	40	32	—	7.2
PJTF-50-*†	50	34	—	9
PJTF-60-*†	60	39.5	—	8
PJTF-80-*†	80	40.5	—	9.5

* Cup material

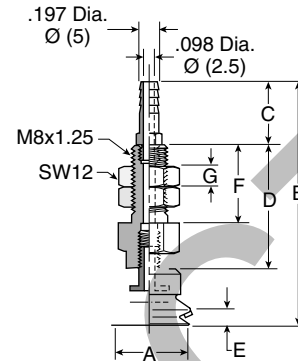
† Thread size

Dimensions

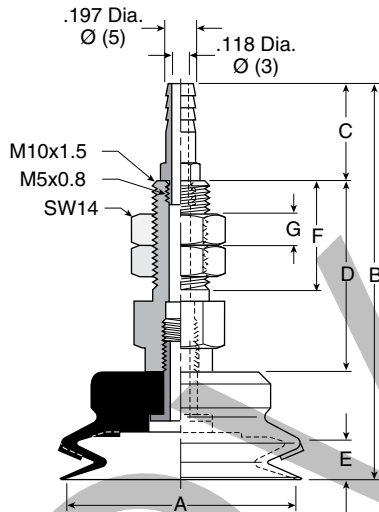
**PJTK-6 and
 PJTK-8**



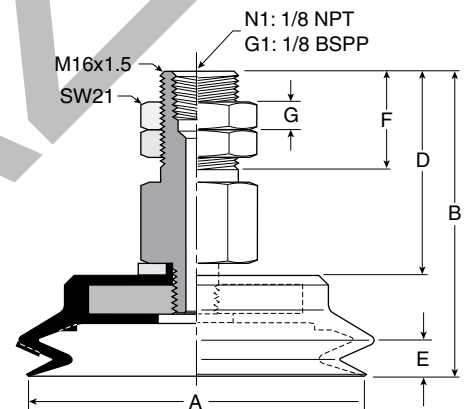
**PJTK-10 thru
 PJTK-20**



**PJTK-30 thru
 PJTK-50**



**PJTK-60 thru
 PJTK-80**



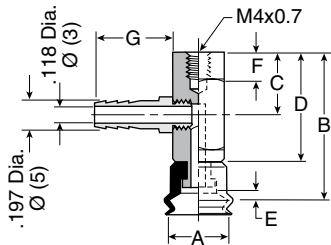
Dimensions (mm)

Model number	ØA	B	C	D	E	F	G	Wt g
PJTK-6-*	6	33	10	14	4.2	12	3	11
PJTK-8-*	8	33	10	14	4	12	3	11
PJTK-10-*	10	47.5	16	22	3	15	3	14
PJTK-15-*	15	49	16	22	3.3	15	3	15
PJTK-20-*	20	51	16	22	5.5	15	5	17
PJTK-30-*	30	66	16	32	7	20	5	42
PJTK-40-*	40	66	16	32	7.2	20	5	44
PJTK-50-*	50	68	16	32	9	20	5	58
PJTK-60-*,†	60	62.5	—	42.5	8	20	6	144
PJTK-80-*,†	80	63.5	—	42.5	9.5	20	6	190

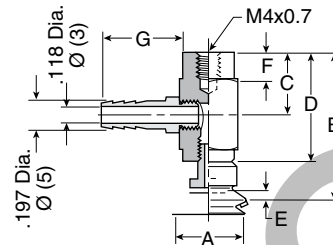
* Cup material
 † Vacuum port

Dimensions

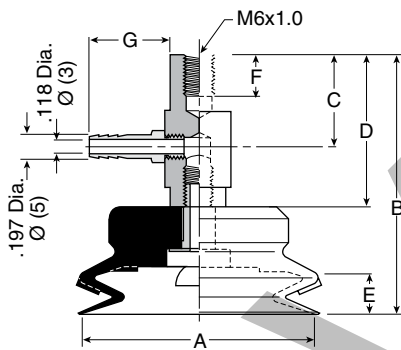
**PJYK-6 and
 PJYK-8**



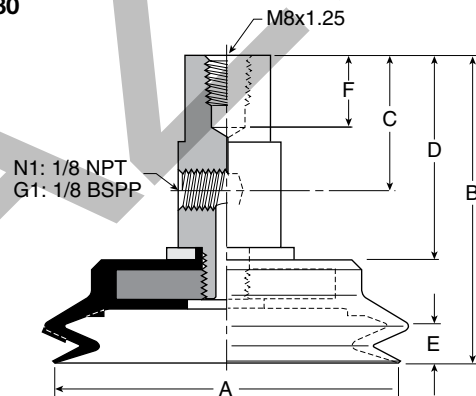
**PJYK-10 thru
 PJYK-20**



**PJYK-25 thru
 PJYK-50**



**PJYK-60 thru
 PJYK-80**



Dimensions (mm)

Model number	ØA	B	C	D	E	F	G	Wt g
PJYK-6-*	6	31.5	13	22.5	4.2	6	16	16
PJYK-8-*	8	31.5	13	22	4.2	6	16	16
PJYK-10-*	10	31.5	14	22	3	6	16	17
PJYK-15-*	15	33	14	22	3.3	6	16	18
PJYK-20-*	20	35	14	22	5.5	6	16	20
PJYK-30-*	30	50	20	32	7	8	16	46
PJYK-40-*	40	50	20	32	7.2	8	16	48
PJYK-50-*	50	52	20	32	9	8	16	62
PJYK-60-*.†	60	62.5	28	42.5	8	11	—	139
PJYK-80-*.†	80	63.5	28	42.5	9.5	11	—	185

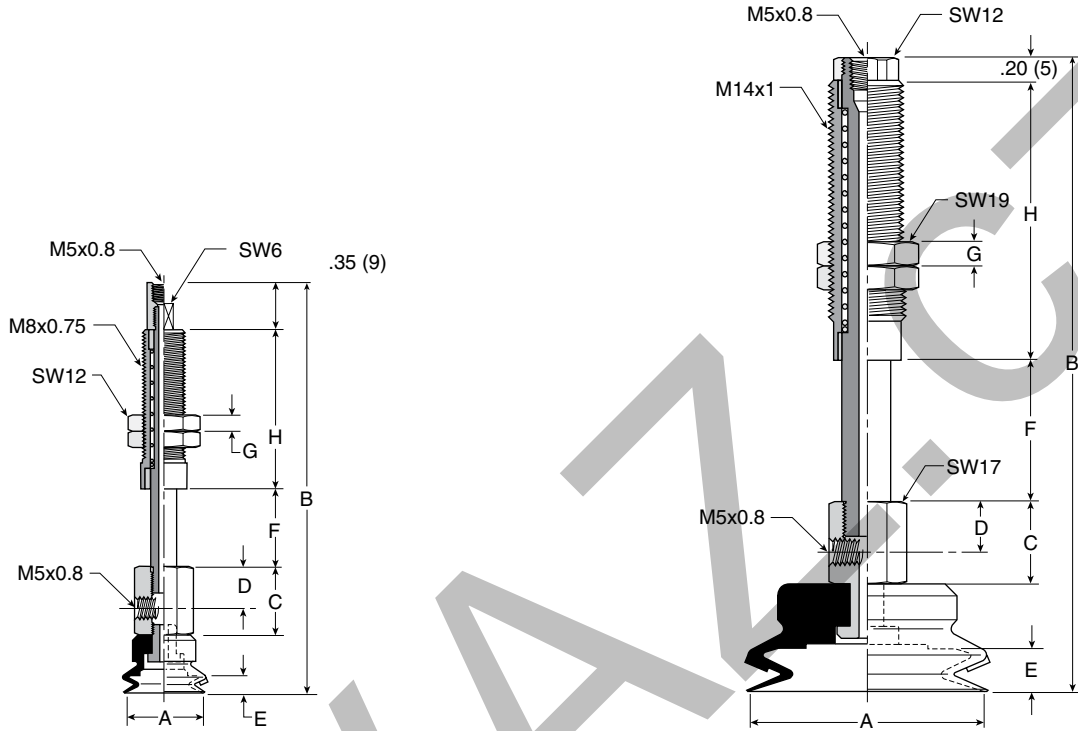
* Cup material

† Vacuum port

Dimensions

**PJTYS10 thru
 PJTYS20**

**PJTYS30 thru
 PJTYS50**



Dimensions (mm)

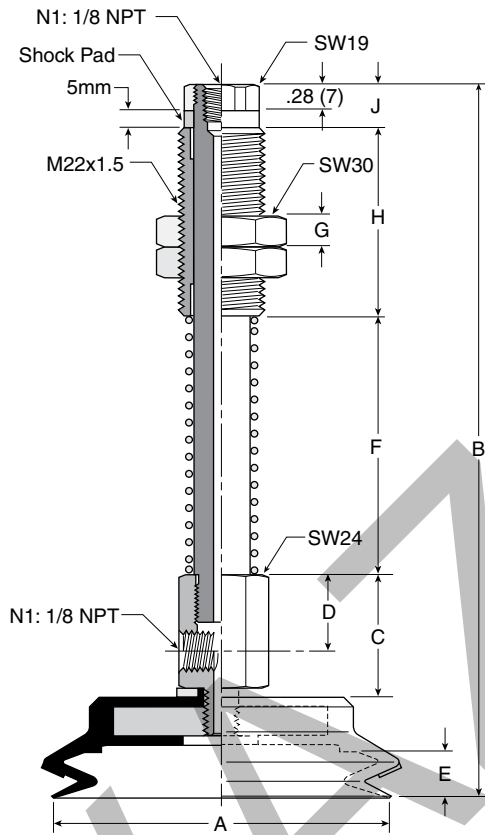
Model number	ØA	B	C	D	E	F	G	H	Wt g
PJTYS1010**†	10	64	13	8	3	10	5	23	31
PJTYS1015**†	10	76.5	13	8	3	15	5	30.5	33.5
PJTYS1510**†	15	66	13	8	3.3	10	5	23	32
PJTYS1515**†	15	78	13	8	3.3	15	5	30.5	34.5
PJTYS2010**†	20	72	13	8	5.5	10	5	23	32
PJTYS2015**†	20	109	13	8	5.5	15	5	30.5	34.5
PJTYS3015**†	30	91	17	10	7	15	5	36	74
PJTYS3030**†	30	128	17	10	7	30	5	58	99
PJTYS3515**†	35	91	17	10	7	15	5	36	76.5
PJTYS3530**†	35	128	17	10	7	30	5	58	101.5
PJTYS4015**†	40	91	17	10	7.2	15	5	36	78.5
PJTYS4030**†	40	128	17	10	7.2	30	5	58	103.5
PJTYS5015**†	50	93	17	10	9	15	5	36	94
PJTYS5030**†	50	130	17	10	9	30	5	58	119

** Cup material
 † Vacuum port



Dimensions

**PJTYS60 thru
 PJTYS80**



Dimensions (mm)

Model number	ØA	B	C	D	E	F	G	H	J	Wt g
PJTYS6030**†	60	157	30	20	8	45	10	50	12	294
PJTYS6050**†	60	182	30	20	8	70	10	50	12	328
PJTYS8030**†	80	158	30	20	9.5	45	10	50	12	338
PJTYS8050**†	80	183	30	20	9.5	70	10	50	12	372

** Cup material
 † Vacuum port