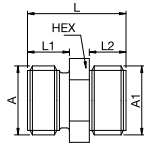


DN Male x Male Nipple

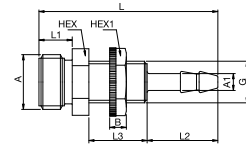
POM or CHEM



A	A1		HEX	L	L1	L2	Version
G1/4	G1/8	DN13/10DX	14	19	8	7	POM
G1/4	G1/4	DN13/13DX	14	19	8	7	POM
G3/8	G1/4	DN17/13DX	17	28.5	9	9	POM
G3/8	G3/8	DN17/17DX	21	25	9	9	POM
G3/8	G1/2	DN17/21DX	21	31.5	9	12	POM
G1/4	G1/8	DN13/10FX	14	19	8	7	CHEM
G1/4	G1/4	DN13/13FX	14	19	8	7	CHEM
G3/8	G1/4	DN17/13FX	17	28.5	9	9	CHEM
G3/8	G3/8	DN17/17FX	21	25	9	9	CHEM
G3/8	G1/2	DN17/21FX	21	31.5	9	12	CHEM

ET Panel Mount, Standard Hose Connection

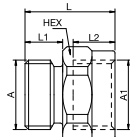
POM or CHEM



A		HEX	HEX1	B	G	L	L1	L2	Version
G1/4	ET13/04DX	14	14	4	M10x1	43	7	8	POM
G1/4	ET13/06DX	14	17	4	M12x1	43	8	8	POM
G1/4	ET13/04FX	14	14	4	M10x1	43	7	8	CHEM
G1/4	ET13/06FX	14	17	4	M12x1	43	8	8	CHEM

RL Reducing Bush

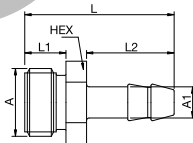
POM or CHEM



A	A1		HEX	L	L1	L2	Version
G1/4	G1/8	RL13/10DX	14	22	8	8	POM
G1/4	G1/4	RL13/13DX	17	25	8	10	POM
G3/8	G1/4	RL17/13DX	17	21.5	9	10	POM
G3/8	G3/8	RL17/17DX	21	21.5	9	10	POM
G3/8	G1/2	RL17/21DX	17	32.5	9	13	POM
G1/4	G1/8	RL13/10FX	14	22	8	8	CHEM
G1/4	G1/4	RL13/13FX	17	25	8	10	CHEM
G3/8	G1/4	RL17/13FX	17	21.5	9	10	CHEM
G3/8	G3/8	RL17/17FX	21	21.5	9	10	CHEM
G3/8	G1/2	RL17/21FX	17	32.5	9	13	CHEM

GT Hose Tail Barb

POM or CHEM



A	A1		HEX	L	L1	L2	Version
G1/4	4	GT13/04DX	14	29	8	17	POM
G1/4	6	GT13/06DX	14	29	8	17	POM
G3/8	6	GT17/06DX	17	39	9	22	POM
G3/8	9	GT17/09DX	17	39	9	22	POM
G3/8	13	GT17/13DX	17	42	9	25	POM
G1/4	4	GT13/04FX	14	29	8	17	CHEM
G1/4	6	GT13/06FX	14	29	8	17	CHEM
G3/8	6	GT17/06FX	17	39	9	22	CHEM
G3/8	9	GT17/09FX	17	39	9	22	CHEM
G3/8	13	GT17/13FX	17	42	9	25	CHEM