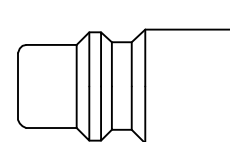




Safety coupling with a self-venting system for ISO 6150 B plug profile. Self-venting takes place during disconnection – no risk of pressurised hoses being tossed around. When the Push-Button is pressed for the first time, air is relieved from the coupling but the plug in the coupling remains locked. The plug is only disconnected when the Push-Button is pressed for the second time. System fulfils the requirements of ISO4414 – increased safety standards in the work place. DIN EN 983. Coupling body is 360° rotating so Push-Button is visible in any position



ISO 6150 B Profile



Working Pressure*:
up to 12 bar

Material:

- Coupling: Anodised Aluminium, Nickel plated brass
- Plug: Nickel plated steel
- Seals: NBR

Working Temperature:

-20°C up to +100°C (NBR)

Flow Rate Air:

1.970 l/min.

inlet pressure 6 bar, pressure drop 0.5 bar

* maximum static working pressure with design factor 4 to 1.



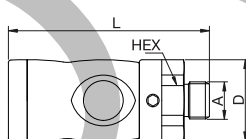
Self-Venting System



Self-Venting System

30KPAW Coupler with valve, Male Thread

Anodised aluminium, nickel-plated brass

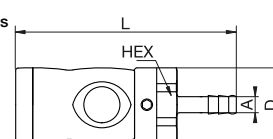


A

	HEX	L	D
G1/4 30KPAW13APX	27	71.7	29
G3/8 30KPAW17APX	27	70.7	29
G1/2 30KPAW21APX	27	73.7	29

30KPTF Coupler with valve, Hose Barb

Anodised aluminium, nickel-plated brass

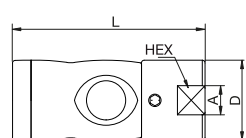


A

	HEX	L	D
8 30KPTF08APX	27	86.7	29
10 30KPTF10APX	27	86.7	29

30KPIW Coupler with valve, Female Thread

Anodised aluminium, nickel-plated brass



A

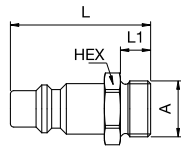
	HEX	L	D
G1/4 30KPIW13APX	23	69.7	29
G3/8 30KPIW17APX	23	71.7	29
G1/2 30KPIW21APX	27	73.7	29



Self-Venting System

30SAW Plug without valve, Male Thread

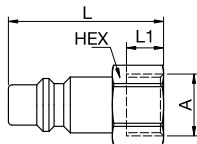
Nickel-plated steel



A			HEX	L	L1
G1/4	30SAW13SXN	9087 30 13	17	42	9
G3/8	30SAW17SXN	9087 30 17	19	42	9
G1/2	30SAW21SXN	9087 30 21	24	46	12

30FIW Plug without valve, Female Thread

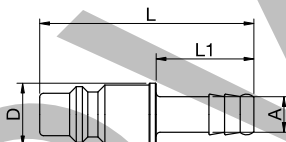
Nickel-plated steel



A			HEX	L	L1
G1/4	30FIW13SXN	9086 30 13	17	40	10
G3/8	30FIW17SXN	9086 30 17	19	42	10
G1/2	30FIW21SXN	9086 30 21	24	43	12

30SFTF Plug without valve, Hose Barb

Nickel-plated steel



A			L	L1	D
8	30SFTF08SXN	9085 30 08	55	25	16
10	30SFTF10SXN	9085 30 10	55	25	16