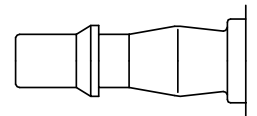




British industrial profile. Coupling system with single-hand operation. High Flow valve for optimum flow and low pressure drop. Robust coupling in slim design mainly for pneumatic applications. The steel sleeve counters oscillating forces. The high insertion depth guarantees by an optimised plug guidance.

- Available on request:
 - with additional end connections
 - other seals for different temperature ranges and fluids



British Profile

Dust Protections (P. 357)
for Coupling Part.-No. SK23S

KA Single Shut-Off

Working Pressure*:
up to 35 bar

Material:

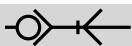
- Coupling: Nickel plated brass / steel
- Plug: Nickel plated steel
- Seals: NBR

Working Temperature:
-20°C up to +100°C (NBR)

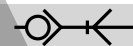
Flow Rate Air:
850 l/min.
inlet pressure 6 bar, pressure drop 0.5 bar

Flow Rate Water:
12 l/min.
pressure drop 0.5 bar

* maximum static working pressure with design factor 4 to 1.



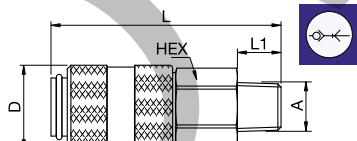
Single Shut-Off



Single Shut-Off

19KAAK Coupler with valve, Male Thread

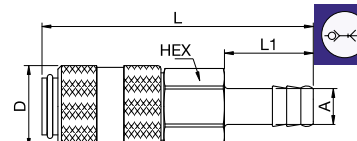
Nickel-plated brass/steel, NBR



A			HEX	L	L1	D
R1/4	19KAAK13MPN	9105 19 13	19	63	12	23,5
R3/8	19KAAK17MPN	9105 19 17	19	62	12	23,5
R1/2	19KAAK21MPN		22	68	17	23,5

19KATF Coupler with valve, Hose Barb

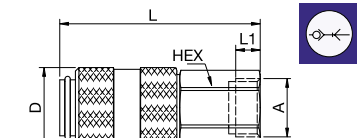
Nickel-plated brass/steel, NBR



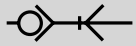
A			HEX	L	L1	D
6	19KATF06MPN	9123 19 06	19	76	25	23,5
8	19KATF08MPN		19	76	25	23,5
10	19KATF10MPN		19	76	25	23,5
13	19KATF13MPN		19	76	25	23,5

19KAIW Coupler with valve, Female Thread

Nickel-plated brass/steel, NBR



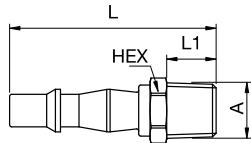
A			HEX	L	L1	D
G1/4	19KAIW13MPN	9114 19 13	19	58	9	23,5
G3/8	19KAIW17MPN		19	58	9	23,5
G1/2	19KAIW21MPN		24	60	12	23,5



Single Shut-Off

19SFAK Plug without valve, Male Thread

Nickel-plated steel



A

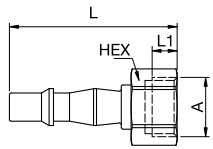


HEX L L1

R1/4	19SFAK13SXN	9084 19 13	14	50	12
R3/8	19SFAK17SXN		17	50	12

19SFIW Plug without valve, Female Thread

Nickel-plated steel



A

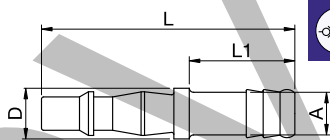


HEX L L1

G1/4	19SFIW13SXN		17	46	9
G3/8	19SFIW17SXN		19	47	9

19SFTF Plug without valve, Hose Barb

Nickel-plated steel



A



L L1 D

6	19SFTF06SXN		60	25	12
8	19SFTF08SXN		60	25	12
10	19SFTF10SXN	9085 19 10	60	25	12