

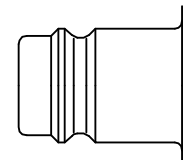


Safety coupling with a self-venting system. Self-venting takes place during disconnection – no risk of pressurised hoses being tossed around. When the sleeve is pulled back, the plug is released yet remains locked in. The coupling valve closes and the air is vented from the air line at the same time. Only then, by operating the sleeve again, can uncoupling take place safely. The system fulfils the requirements of ISO 4414 – increased safety standards in the work place. DIN EN 983. Ultra High Flow valve for optimum flow and low pressure drop.

- Available on request:
 - with additional end connections

Safety Note

Reliable functioning can only be guaranteed in conjunction with original Parker Rectus plugs made of steel.



Euro Profile



Working Pressure*:
up to 12 bar

Material:

- Coupling: Nickel plated brass / steel
- Plug: Nickel plated steel
- Seals: NBR

Working Temperature:

-20°C up to +100°C (NBR)

Flow Rate Air:

3.500 l/min.

inlet pressure 6 bar, pressure drop 0.5 bar

* maximum static working pressure with design factor 4 to 1.



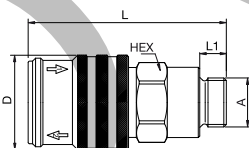
Self-Venting System



Self-Venting System

1700KEAW Coupler with valve, Male Thread

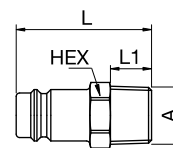
Nickel-plated brass/steel, NBR



A	HEX	L	L1	D
G3/8	1700KEAW17SPN	24	67	9 32
G1/2	1700KEAW21SPN	24	70	12 32
G3/4	1700KEAW26SPN	30	74	16 32

27SFAK Plug without valve, Male Thread

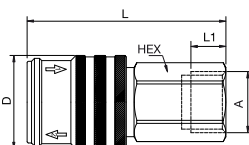
Nickel-plated steel



A	HEX	L	L1
R1/4	27SFAK13SXN	17	40 12
R3/8	27SFAK17SXN	17	40 12
R1/2	27SFAK21SXN	22	45 17
R3/4	27SFAK26SXN	27	48 19

1700KEIW Coupler with valve, Female Thread

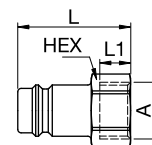
Nickel-plated brass/steel, NBR



A	HEX	L	L1	D
G3/8	1700KEIW17SPN	24	64.5	12 32
G1/2	1700KEIW21SPN	24	68	12 32
G3/4	1700KEIW26SPN	32	74	16 32

27SFIW Plug without valve, Female Thread

Nickel-plated steel



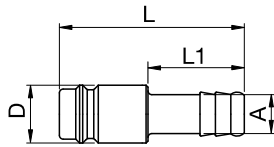
A	HEX	L	L1
G1/4	27SFIW13SXN	17	33 9
G3/8	27SFIW17SXN	9086 27 17	19 33 9
G1/2	27SFIW21SXN	9086 27 21	24 37 12
G3/4	27SFIW26SXN	9086 27 27	32 42 16




Self-Venting System

27SFTF Plug without valve, Hose Barb

Nickel-plated steel



A			L	L1	D
6		27SFTF06SXN	48	25	15
8		27SFTF08SXN	9085 27 08	48	25
9		27SFTF09SXN	48	25	15
10		27SFTF10SXN	9085 27 10	48	25
13		27SFTF13SXN	9085 27 13	48	25
16		27SFTF16SXN	49	25	18
19		27SFTF19SXN	9085 27 19	49	25

KROVANZ.COM