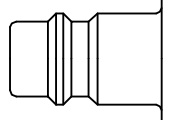




Premium industrial coupling 3/8" with European standard profile. Suitable for compressed air applications with greater than average air consumption. Coupling system with single-hand operation. Ultra High Flow valve for optimum flow and low pressure drop.

- Available on request:
  - with additional end connections
  - other seals for different temperature ranges and fluids



Euro Profile

**Dust Protections** (P. 357)  
for Coupling Part.-No. SK23S  
for Plug Part.-No. SK12S

## KA Single Shut-Off

**Working Pressure\*:**  
up to 35 bar

**Material:**

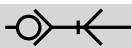
- Coupling: Nickel plated brass / QPQ treated steel
- Plug: Zinc plated steel
- Seals: NBR

**Working Temperature:**  
-20°C up to +100°C (NBR)

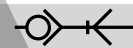
**Flow Rate Air:**  
2.020 l/min.  
inlet pressure 6 bar, pressure drop 0.5 bar

**Flow Rate Water:**  
27 l/min.  
pressure drop 0.5 bar

\* maximum static working pressure with design factor 4 to 1.



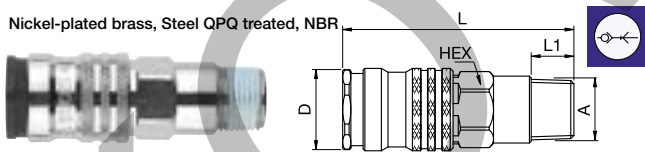
Single Shut-Off



Single Shut-Off

### 1600KAAK Coupler with valve, Male Thread

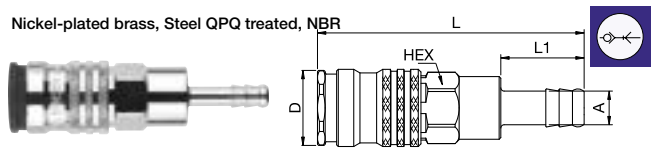
Nickel-plated brass, Steel QPQ treated, NBR



A	HEX	L	L1	D	
R1/4	1600KAAK13SPN	19	65	12	23
R3/8	1600KAAK17SPN	19	65	12	23
R1/2	1600KAAK21SPN	22	59.5	17	23

### 1600KATF Coupler with valve, Hose Barb

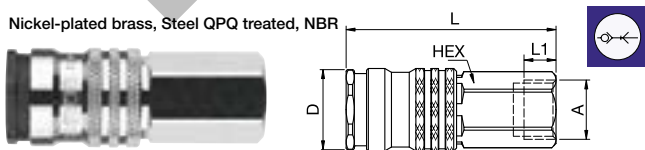
Nickel-plated brass, Steel QPQ treated, NBR



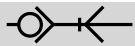
A	HEX	L	L1	D	
6	1600KATF06SPN	19	80	25	23
8	1600KATF08SPN	19	80	25	23
9	1600KATF09SPN	19	80	25	23
10	1600KATF10SPN	19	80	25	23
13	1600KATF13SPN	19	80	25	23

### 1600KAIW Coupler with valve, Female Thread

Nickel-plated brass, Steel QPQ treated, NBR



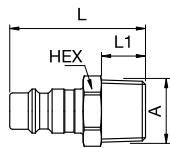
A	HEX	L	L1	D	
G1/4	1600KAIW13SPN	19	59	9	23
G3/8	1600KAIW17SPN	19	59	9	23
G1/2	1600KAIW21SPN	24	62	12	23



Single Shut-Off

## 25SFA Plug without valve, Male Thread

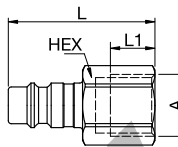
Zinc-plated steel



A			HEX	L	L1
R1/8	<b>25SFAK10SXZ</b>		13	33	9
G1/8	<b>25SAFW10SXZ</b>	<b>9087 25 10</b>	13	30.5	6.5
R1/4	<b>25SFAK13SXZ</b>		14	36.5	12
G1/4	<b>25SAFW13SXZ</b>	<b>9087 25 13</b>	17	32.5	8
R3/8	<b>25SFAK17SXZ</b>		17	37	12
G3/8	<b>25SAFW17SXZ</b>	<b>9087 25 17</b>	19	34	9
R1/2	<b>25SFAK21SXZ</b>		22	43	17
G1/2	<b>25SAFW21SXZ</b>	<b>9087 25 21</b>	24	37.5	10.5

## 25SFIW Plug without valve, Female Thread

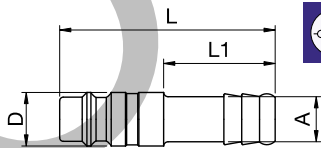
Zinc-plated steel



A			HEX	L	L1
G1/8	<b>25SFIW10SXZ</b>	<b>9086 25 10</b>	14	30	5
G1/4	<b>25SFIW13SXZ</b>	<b>9086 25 13</b>	17	38.5	12
G3/8	<b>25SFIW17SXZ</b>	<b>9086 25 17</b>	19	39.5	12
G1/2	<b>25SFIW21SXZ</b>	<b>9086 25 21</b>	24	44	14

## 25SFTF Plug without valve, Hose Barb

Zinc-plated steel



A			L	L1	D
6	<b>25SFTF06SXZ</b>	<b>9085 25 06</b>	48	25	12
8	<b>25SFTF08SXZ</b>	<b>9085 25 08</b>	48	25	12
9	<b>25SFTF09SXZ</b>	<b>9085 25 09</b>	48	25	12
10	<b>25SFTF10SXZ</b>	<b>9085 25 10</b>	48	25	12
13	<b>25SFTF13SXZ</b>	<b>9085 25 13</b>	48	25	15