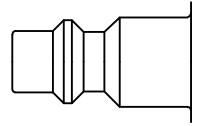




Safety coupling 1/4" with a self-venting system according to ISO 6150 B. Self-venting takes place during disconnection – no risk of pressurised hoses being tossed around. When the sleeve is pulled back, the plug is released yet remains locked in. The coupling valve closes and the air is vented from the air line at the same time. Only then, by operating the sleeve again, can uncoupling take place safely. The system fulfils the requirements of ISO 4414 – increased safety standards in the work place. DIN EN 983. Ultra High Flow valve for optimum flow and low pressure drop.




ISO B Profile

- Available on request:
  - with additional end connections

**Safety Note**

Reliable functioning can only be guaranteed in conjunction with original Parker Rectus plugs made of steel.



**KE** Self-Venting System

**Working Pressure\*:**  
up to 12 bar

**Material:**

- Coupling: Nickel plated brass / steel
- Plug: Nickel plated steel
- Seals: NBR

**Working Temperature:**  
-20°C up to +100°C (NBR)

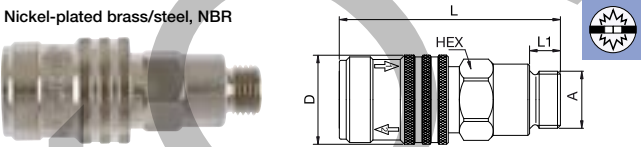
**Flow Rate Air:**  
950 l/min.  
inlet pressure 6 bar, pressure drop 0.5 bar

\* maximum static working pressure with design factor 4 to 1.

 **Self-Venting System**

**1400KEAW** Coupler with valve, Male Thread

Nickel-plated brass/steel, NBR

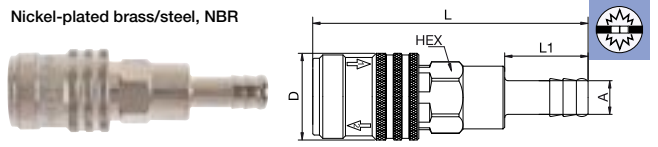


A		HEX	L	L1	D
G1/4	<b>1400KEAW13SPN</b>	19	64.5	9	26
G3/8	<b>1400KEAW17SPN</b>	21	64.5	9	26
G1/2	<b>1400KEAW21SPN</b>	24	67.5	12	26

 **Self-Venting System**

**1400KETF** Coupler with valve, Hose Barb

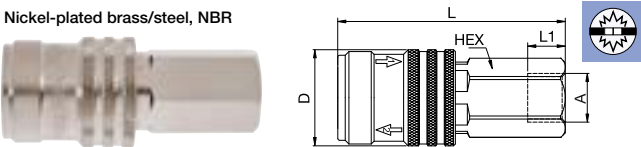
Nickel-plated brass/steel, NBR



A		HEX	L	L1	D
6	<b>1400KETF06SPN</b>	19	82.5	25	26
8	<b>1400KETF08SPN</b>	19	82.5	25	26
10	<b>1400KETF10SPN</b>	19	82.5	25	26
13	<b>1400KETF13SPN</b>	19	82.5	25	26

**1400KEIW** Coupler with valve, Female Thread

Nickel-plated brass/steel, NBR



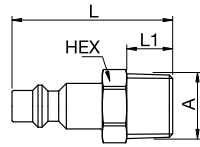
A		HEX	L	L1	D
G1/4	<b>1400KEIW13SPN</b>	19	61.5	9	26
G3/8	<b>1400KEIW17SPN</b>	19	61.5	9	26
G1/2	<b>1400KEIW21SPN</b>	24	64.5	12	26



## Self-Venting System

### 23SFAK Plug without valve, Male Thread

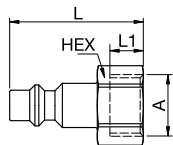
Nickel-plated steel



A		HEX	L	L1
R1/8	<b>23SFAK10SXN</b>	13	39	9
R1/4	<b>23SFAK13SXN</b>	14	42	12
R3/8	<b>23SFAK17SXN</b>	17	42	12
R1/2	<b>23SFAK21SXN</b>	22	48	17

### 23SFIW Plug without valve, Female Thread

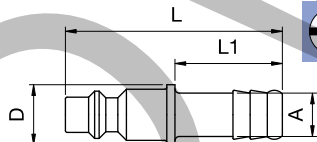
Nickel-plated steel



A		HEX	L	L1
G1/8	<b>23SFIW10SXN</b>	14	36	9
G1/4	<b>23SFIW13SXN</b>	17	36	9
G3/8	<b>23SFIW17SXN</b>	19	36	9
G1/2	<b>23SFIW21SXN</b>	24	39	12

### 23SFTF Plug without valve, Hose Barb

Nickel-plated steel



A		L	L1	D
6	<b>23SFTF06SXN</b>	51	25	14
8	<b>23SFTF08SXN</b>	51	25	14
9	<b>23SFTF09SXN</b>	51	25	14
10	<b>23SFTF10SXN</b>	51	25	14
13	<b>23SFTF13SXN</b>	51	25	14