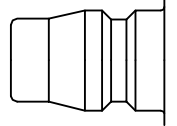




Robust brass coupling with Japanese industrial profile. Coupling system with single-hand operation. Above average flow volumes and structure resistant to the effects of external forces.

- Available on request:
  - in brass material with nickel plating
  - with additional end connections
  - other seals for different temperature ranges and fluids



Japanese Profile

**KA** Single Shut-Off

**Working Pressure\*:**  
up to 35 bar

**Material:**

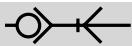
- Coupling: Brass
- Plug: Nickel plated steel
- Seals: NBR

**Working Temperature:**  
-20°C up to +100°C (NBR)

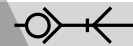
**Flow Rate Air:**  
1.150 l/min.  
inlet pressure 6 bar, pressure drop 0.5 bar

**Flow Rate Water:**  
16 l/min.  
pressure drop 0.5 bar

\* maximum static working pressure with design factor 4 to 1.



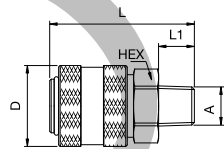
Single Shut-Off



Single Shut-Off

## 13KAAK Coupler with valve, Male Thread

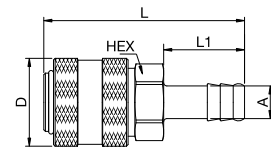
Brass, NBR



A	HEX	L	L1	D
R1/4 <b>13KAAK13MPX</b>	22	49	12	27
R3/8 <b>13KAAK17MPX</b>	22	49	12	27
R1/2 <b>13KAAK21MPX</b>	22	53	17	27

## 13KATF Coupler with valve, Hose Barb

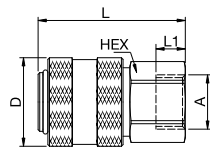
Brass, NBR



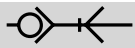
A	HEX	L	L1	D
6 <b>13KATF06MPX</b>	21	62	25	27
8 <b>13KATF08MPX</b>	21	62	25	27
10 <b>13KATF10MPX</b>	21	62	25	27
13 <b>13KATF13MPX</b>	21	62	25	27

## 13KAIW Coupler with valve, Female Thread

Brass, NBR



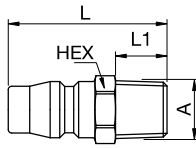
A	HEX	L	L1	D
G1/4 <b>13KAIW13MPX</b>	22	45	9	27
G3/8 <b>13KAIW17MPX</b>	22	45	9	27
G1/2 <b>13KAIW21MPX</b>	24	48	12	27



Single Shut-Off

## 13SFAK Plug without valve, Male Thread

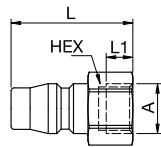
Nickel-plated steel



A			HEX	L	L1
R1/4	13SFAK13SXN	9084 13 13	14	37	12
R3/8	13SFAK17SXN	9084 13 17	17	37	12
R1/2	13SFAK21SXN	9084 13 21	22	44	17

## 13SFIW Plug without valve, Female Thread

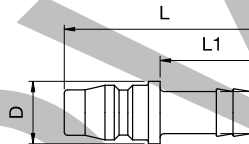
Nickel-plated steel



A			HEX	L	L1
G1/4	13SFIW13SXN	9086 13 13	17	34	9
G3/8	13SFIW17SXN	9086 13 17	19	34	9
G1/2	13SFIW21SXN	9086 13 21	24	35	10

## 13SFTF Plug without valve, Hose Barb

Nickel-plated steel



A			L	L1	D
6	13SFTF06SXN		48	25	15
8	13SFTF08SXN	9085 13 08	48	25	15
10	13SFTF10SXN	9085 13 10	48	25	15
13	13SFTF13SXN	9085 13 13	48	25	15