



Smallest mini industrial coupling for air and gas applications. Primarily in medicine, didactics and model building. Partly suitable for liquids due to size. Coupling system with single-hand operation. Extremely small dimensions.

- Available on request:
 - in brass material without nickel plating
 - with additional end connections
 - other seals for different temperature ranges and fluids

KA Single Shut-Off

Working Pressure*:
up to 35 bar

Material:

- Coupling: Nickel plated brass
- Plug: Nickel plated brass
- Seals: NBR

Working Temperature:
-20°C up to +100°C (NBR)

Flow Rate Air:
50 l/min.
inlet pressure 6 bar, pressure drop 0.5 bar

Flow Rate Water:
0.6 l/min.
pressure drop 0.5 bar

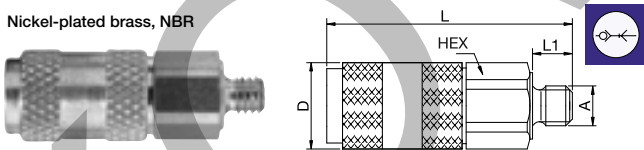
* maximum static working pressure with design factor 4 to 1.

Single Shut-Off

Single Shut-Off

02KAAM Coupler with valve, Male Thread

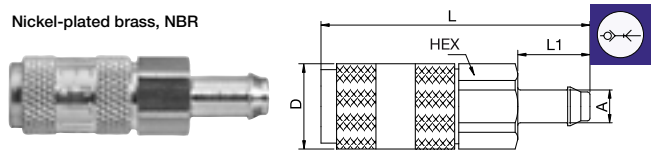
Nickel-plated brass, NBR



A	HEX	L	L1	D
M3 02KAAM03MPN	6	19	3	6.5

02KATF Coupler with valve, Hose Barb

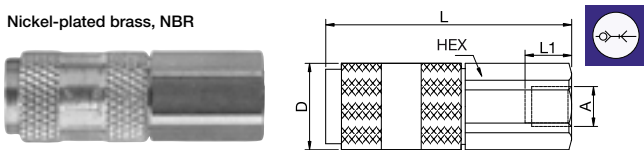
Nickel-plated brass, NBR



A	HEX	L	L1	D
2 02KATF02MPN	6	21	5.5	6.5
3 02KATF03MPN	6	22	5.5	6.5

02KAIM Coupler with valve, Female Thread

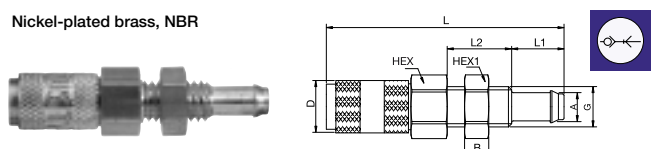
Nickel-plated brass, NBR



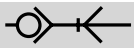
A	HEX	L	L1	D
M3 02KAIM03MPN	6	19	3	6.5

02KATS Coupler with valve, Panel Mount with Hose Barb

Nickel-plated brass, NBR



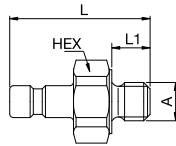
A	HEX	HEX1	B	G	L	L1	L2	D
2 02KATS02MPN	7	7	3	M5	29	5.5	8	6.5



Single Shut-Off

02SFAM Plug without valve, Male Thread

Nickel-plated brass



A

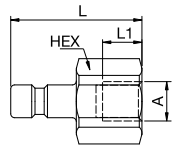
HEX L L1

M3 02SFAM03MXN

6 11 3

02SFIM Plug without valve, Female Thread

Nickel-plated brass



A

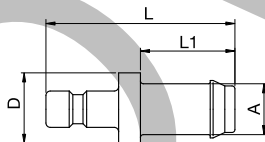
HEX L L1

M3 02SFIM03MXN

6 10 3

02SFTF Plug without valve, Hose Barb

Nickel-plated brass



A

L L1 D

2 02SFTF02MXN

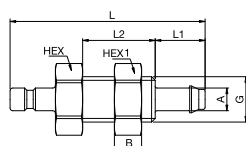
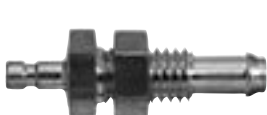
12 5.5 4

3 02SFTF03MXN

13 6.5 5

02SFTS Plug without valve, Panel Mount with Hose Barb

Nickel-plated brass



A

HEX HEX1 B G L L1 L2

2 02SFTS02MXN

7 7 3 M5 22 5.5 8