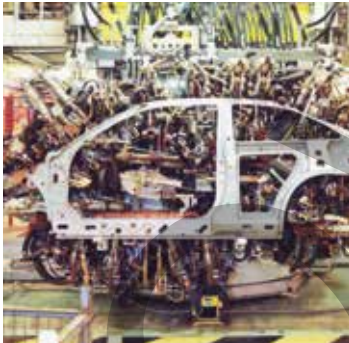




aerospace
 climate control
 electromechanical
 filtration
 fluid & gas handling
 hydraulics
pneumatics
 process control
 sealing & shielding



Poppet Valves

Heavy duty poppet valves
 G3/8, G1/2 - 2/2, 3/2

Catalogue PDE2630TCUK August 2015



ENGINEERING YOUR SUCCESS.

Material Specification.....	3
Operating Information.....	3
Order key.....	4
Flow Characteristics.....	5
Main Data Mechanically Operated Valves.....	6 - 7
Dimensions.....	8 - 9
Solenoid Operators	10
Cable Plugs.....	11
Accessories.....	11

Important !



Before carrying out any service work, ensure that the valve and manifold have been vented. Remove the primary supply air hose to ensure total disconnection of the air supply before dismantling valves or blank connection blocks.

NB !



All technical data in this catalogue is typical only. The air quality is decisive for the valve life: see ISO 8573.

WARNING

FAILURE OR IMPROPER SELECTION OR IMPROPER USE OF THE PRODUCTS AND/OR SYSTEMS DESCRIBED HEREIN OR RELATED ITEMS CAN CAUSE DEATH, PERSONAL INJURY AND PROPERTY DAMAGE.

This document and other information from Parker Hannifin Corporation, its subsidiaries and authorized distributors provide product and/or system options for further investigation by users having technical expertise. It is important that you analyze all aspects of your application and review the information concerning the product or system in the current product catalog. Due to the variety of operating conditions and applications for these products or systems, the user, through its own analysis and testing, is solely responsible for making the final selection of the products and systems and assuring that all performance, safety and warning requirements of the application are met. The products described herein, including without limitation, product features, specifications, designs, availability and pricing, are subject to change by Parker Hannifin Corporation and its subsidiaries at any time without notice.

SALE CONDITIONS

The items described in this document are available for sale by Parker Hannifin Corporation, its subsidiaries or its authorized distributors. Any sale contract entered into by Parker will be governed by the provisions stated in Parker's standard terms and conditions of sale (copy available upon request).

Heavy Duty Poppet Valves

Heavy duty poppet valves

2/2 & 3/2 - G³/₈" & G¹/₂"

These valves use the well proven poppet principle to give high flow rates with short valve travel, both the 2/2 and 3/2 valves in the range are available in G³/₈" and G¹/₂" port sizes. This means that each actuator is available in four configurations i.e. 3/8" ports 2/2 or 3/2 and G¹/₂" ports 2/2 or 3/2. All valves are normally closed.

The bodies are of block form construction for ease of mounting. Springs are stainless steel; internal seals being of nitrile rubber. The 2/2 body allows air in one direction only, 3/2 versions having the facility of exhausting air through the actuator unit. This exhaust vent is unthreaded on all valves except the pilot and solenoid types which allows the piping away of exhaust air.

All mechanisms are spring returned.

Working medium, air quality

Working medium: Dry, filtered compressed air to ISO 8573-1 class 3.4.3.

Recommended air quality for valves

For best possible service life and trouble free operation, ISO 8573-1 quality class 3.4.3 should be used. This means 5µm filter (standard filter) dew point +3°C for indoor operation (a lower dew point should be selected for outdoor operation) and oil concentration 1.0 mg oil/m³, which is what a standard compressor with a standard filter gives.

ISO 8573-1 quality classes

Quality class	Pollution		Water max. press. dew point (°C)	Oil max. concentration (mg/m ³)
	particle size (µm)	max. concentration (mg/m ³)		
1	0,1	0,1	-70	0,01
2	1	1	-40	0,1
3	5	5	-20	1,0
4	15	8	+3	5,0
5	40	10	+7	25
6	-	-	+10	-

Specification

Material

Body	Zinc die cast
Roller	Zinc plated steel
Mechanical arm	Zinc plated steel
Poppet	Stainless steel
Seals	Nitrile
Spring	Stainless steel
Bush	Aluminium
Piston	Aluminium

Operating information

Working pressure	0 - 10 bar
Working temperature	-10°C to +80°C
Solenoid version	-10°C to +50°C
Minimum pilot pressure	1.9 bar @ 6 bar supply
Response time (solenoid energised)	14 msec
Response time (solenoid de-energised)	75 msec

Flow capacities in accordance with ISO6358

	B102-B103	B202-B203
Flow;	C = 7,54	C = 10,75 NI/s x bar
	b = 0,29	b = 0,24
	Qn = 33 l/s	Qn = 43 l/s
	Qmax = 54 l/s	Qmax = 75 l/s
	Cv = 2,65	Cv = 3,20

Part number configurator for solenoid valves

Valve family	
DB	HD poppet solenoid operated

Thread port	
1	3/8 BSP
2	1/2 BSP

Air supply to solenoid	
2	Internal

Function	
2	2/2 NC
3	3/2 NC

Overrides	
A	None
C	Flush - Locking
D	Extended - non locking

Voltage ¹			
	AC		DC
	60Hz	50Hz	
40	12		
42	24	22	
45			12
49			24
53	120	110	
57	240	230	
XX	valve less solenoid/coil		

¹ Shaded part numbers are standard
 Unshaded part numbers are available on request but will be subject to minimum order quantities
 Otherwise order XX version and order coil separately.

Part number configurator for manual & mechanical operated poppet valves

Valve family	
B	HD poppet manual & mechanical

Thread port	
1	3/8 BSP
2	1/2 BSP

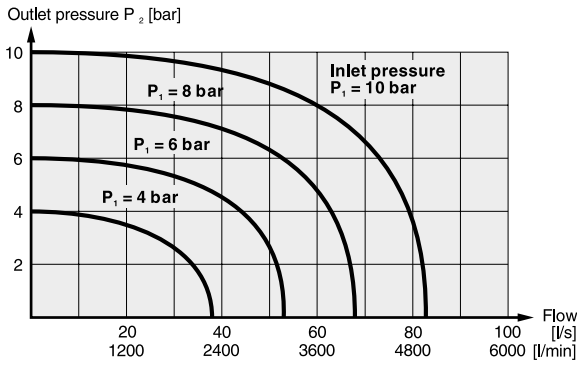
Function	
2	2/2 NC
3	3/2 NC

Operator	
C	Ball
L	Lever
P	Pilot pressure
R	Roller lever

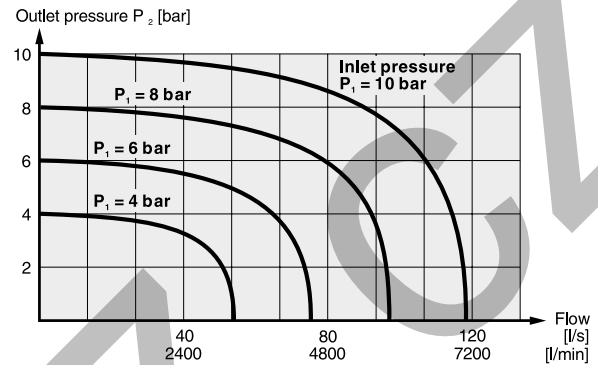
Flow characteristics

Flow capacities in accordance with ISO6358
 Flow measured with valve on manifold
 All pressures = effective pressure

B102



B202



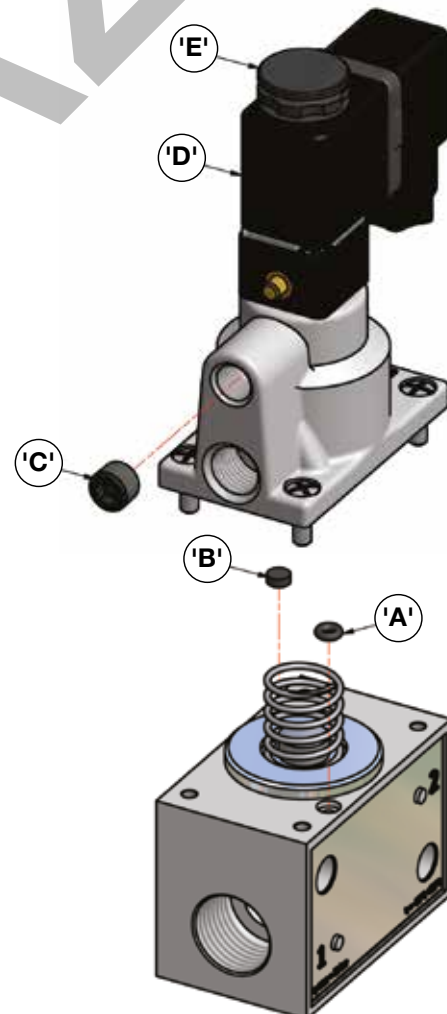
Electrical Information

Power consumption	Inrush	Hold
	AC VA	8.5VA
	DC 4.8 Watt	
Rating	100% continuous	
Isolation class	F	
Protection class	IP 65 (P 54) DIN 40 050	
Connection	DIN 43 650 Form B	
Solenoid response	milliseconds at 7 bar	

External pilot supply option

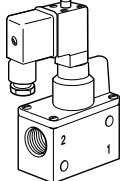
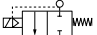

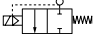

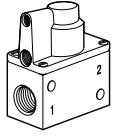

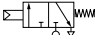
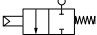
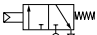
Solenoid pilot operated valves have an internal pilot air supply, but provisions for external pilot supply is provided. To use with external supply interchange 'O'-ring (Item 'A') and Plug (Item 'B') to block off the internal pilot supply. Remove hexagon socket plug (Item 'C') from the external pilot supply port, connecting an air supply as desired.

Orientation of the solenoid coil (Item 'D') can be altered through 90° increments by loosening the diffuser nut (Item 'E').



Heavy Duty Poppet Valves

Main data for mechanically operated valves, Heavy duty poppet series (NC only)

Symbol	Type	Connection	Actuator	Return	Voltage	Weight Kg	Order code	
		2/2	G3/8	Solenoid pilot	Spring	24VDC Less solenoid	0.70 0.65	DB122A49 DB122AXX
		3/2	G3/8	Solenoid pilot	Spring	24VDC Less solenoid	0.70 0.65	DB123A49 DB123AXX
		2/2	G1/2	Solenoid pilot	Spring	24VDC Less solenoid	0.70 0.65	DB222A49 DB222AXX
		3/2	G1/2	Solenoid pilot	Spring	24VDC Less solenoid	0.70 0.65	DB223A49 DB223AXX
		2/2	G3/8	Air pilot	Spring		0.61	B102P
		3/2	G3/8	Air pilot	Spring		0.61	B103P
		2/2	G1/2	Air pilot	Spring		0.61	B202P
		3/2	G1/2	Air pilot	Spring		0.61	B203P

Order electrical connectors for solenoids separately. See page 10

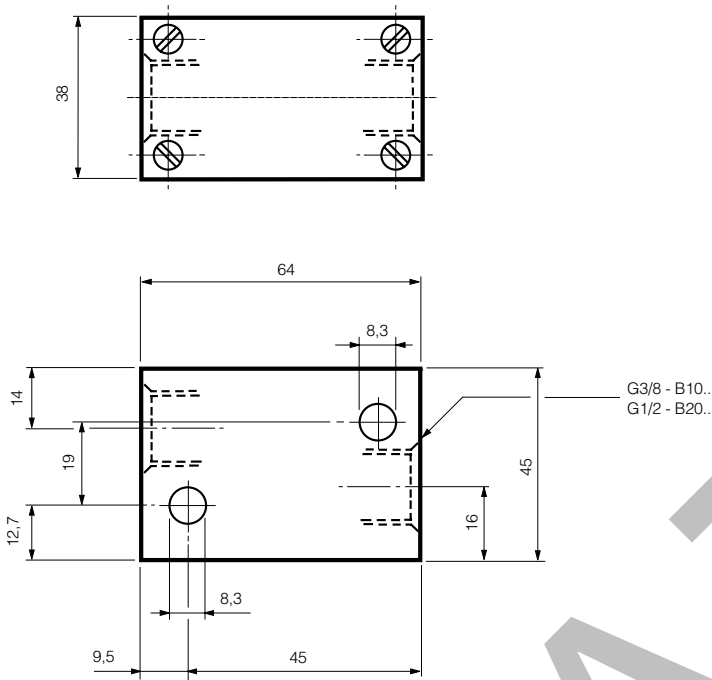
Heavy Duty Poppet Valves

Main data for mechanically operated valves, Heavy duty poppet series (NC only)

Symbol	Type	Connection	Actuator	Return	Operating force at 6 bar, N	Weight Kg	Order code	
	2/2	G3/8	Lever	Lever	22	0.65	B102L	
		3/2	G3/8	Lock down lever	Lever	22	0.65	B103L
		2/2	G1/2	Lock down lever	Lever	22	0.65	B202L
		3/2	G1/2	Lock down lever	Lever	22	0.65	B203L
		2/2	G3/8	Roller lever	Spring	36	0.642	B102R
		3/2	G3/8	Roller lever	Spring	36	0.630	B103R
		2/2	G1/2	Roller lever	Spring	36	0.614	B202R
		3/2	G1/2	Roller lever	Spring	36	0.604	B203R
		2/2	G3/8	Ball	Spring	220	0.542	B102C
		3/2	G3/8	Ball	Spring	220	0.532	B103C
		2/2	G1/2	Ball	Spring	220	0.530	B202C
		3/2	G1/2	Ball	Spring	220	0.520	B203C

Mechanically operated valves - 2/2, 3/2 valves

Basic body dimensions

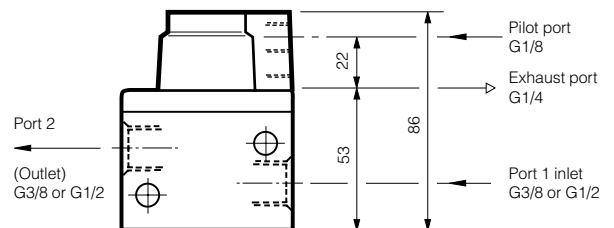
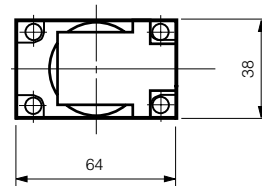
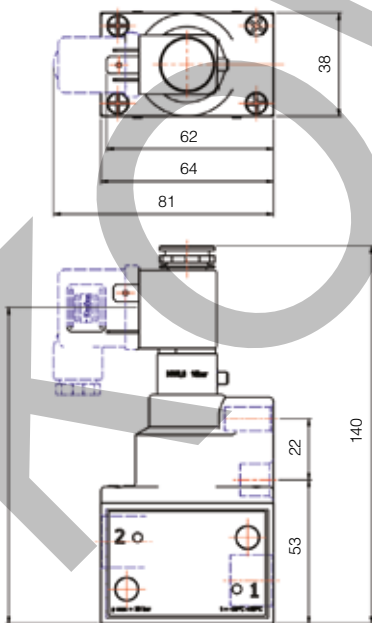


Solenoid pilot operated spring return

DB122, DB123, DB222, DB223

Air pilot operated spring return

B102P, B103P, B202P, B203P

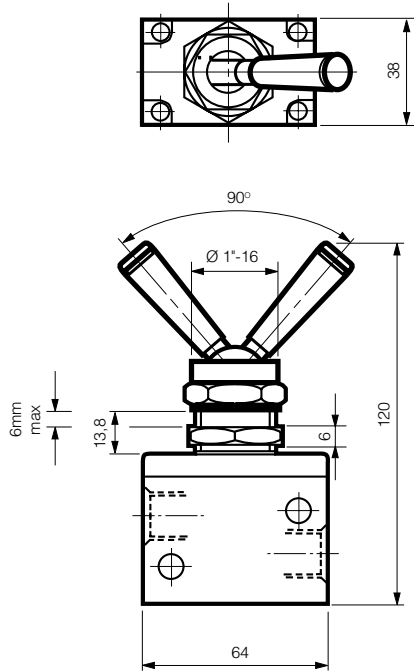


All dimensions in mm unless otherwise stated

Mechanically operated valves - 2/2, 3/2 valves

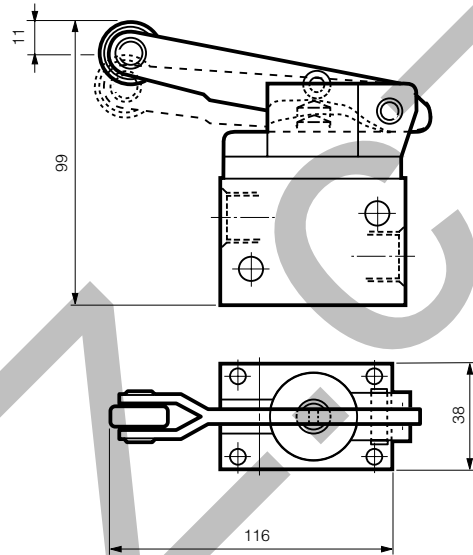
Lock down lever

B102L, B103L, B202L, B203L



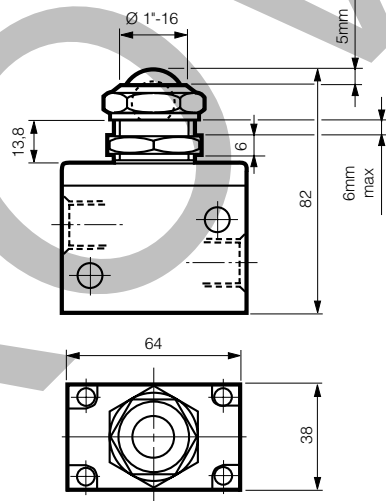
Roller lever operated spring return

B102R, B103R, B202R, B203R



Ball operated spring return

B102C, B103C, B202C, B203C



All dimensions in mm unless otherwise stated

22mm solenoid operator part numbers and spares

Solenoid coils for 22mm solenoid operators

Voltage	Order code Form B	Weight (Kg)
12V 60Hz	P2FCB440	0.093
24V 50/60Hz	P2FCB442	0.093
12V DC	P2FCB445	0.093
12V DC Mobile	P2FCB447	0.093
24v DC Mobile	P2FCB448	0.093
24V DC	P2FCB449	0.093
48V DC	P2FCB451	0.093
110V/50Hz, 120V/60Hz	P2FCB453	0.093
230V/50Hz, 230V/60Hz	P2FCB457	0.093

Spare Solenoid Nuts

Valves with vented exhaust are fitted with diffuser plastic nut

Order Code
P2FND

Spare Solenoid Operators

Solenoid pilot operator 22mm NC, Normal duty (Max Operating pressure 10bar, Temp -10°C to +50°C)

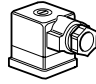
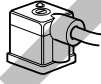
Order code (with locking bi-stable m/o)	Weight Kg
P2FP13N4C	0.05
Order code (with Non-locking monostable m/o)	Weight Kg
P2FP13N4D	0.05
Order code (with no m/o)	Weight Kg
P2FP13N4A	0.05

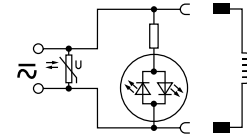
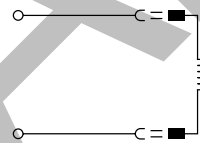
Note.

The operators are supplied with mounting screws and interface 'O' rings.

Coils and connectors must be ordered separately.

Solenoid Connectors / Cable Plugs EN175301-803

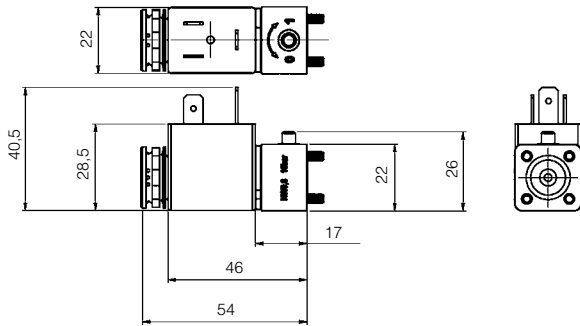
	Description	Order code 22mm Industrial Form B
With standard screw	Standard IP65 without flying lead	3EV10V10
	With LED and protection 24V AC/DC	3EV10V20-24
	With LED and protection 110V AC	3EV10V20-110
	With LED and protection 230V AC	3EV10V20-230
With cable	24V AC/DC, 5m cable LED and protection IP65	3EV10V20-24L5
	110V AC/DC, 5m cable LED and protection IP65	3EV10V20-110L5
	230V AC, 5m cable LED and protection IP65	3EV10V20-230L5



3EV10V10	3EV10V20-24	3EV10V20-24L5
	3EV10V20-110	3EV10V20-110L5
	3EV10V20-230	3EV10V20-230L5

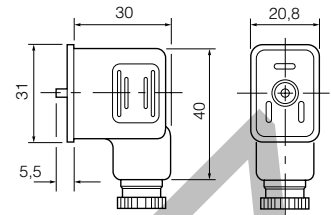
Cable Plug Dimensions (mm)

Solenoid operators P2E-•V...



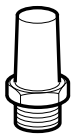
Cable plugs Form B

3EV10V10



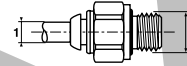
Accessories

Sintered bronze series silencers



Port	Order code	Pack Qty
G1/4	P6M-BAA2	1

Male straight connectors - Parallel thread



Tube Ø1	Thread B	Order code	Box Qty
4	1/8	F4PMB4-1/8	20
6	1/8	F4PMB6-1/8	30
6	1/4	F4PMB6-1/4	30
8	1/8	F4PB8-1/8	40
8	1/4	F4PB8-1/4	30
8	3/8	F4PB8-3/8	20
10	1/4	F4PB10-1/4	20
10	3/8	F4PB10-3/8	20
10	1/2	F4PB10-1/2	10
12	1/4	F4PB12-1/4	10
12	3/8	F4PB12-3/8	10
12	1/2	F4PB12-1/2	10
14	3/8	F4PB14-3/8	10
14	1/2	F4PB14-1/2	10

Parker Worldwide

Europe, Middle East, Africa

AE – United Arab Emirates,
Dubai

Tel: +971 4 8127100
parker.me@parker.com

AT – Austria, Wiener Neustadt

Tel: +43 (0)2622 23501-0
parker.austria@parker.com

AT – Eastern Europe, Wiener
Neustadt

Tel: +43 (0)2622 23501 900
parker.easteurope@parker.com

AZ – Azerbaijan, Baku

Tel: +994 50 2233 458
parker.azerbaijan@parker.com

BE/LU – Belgium, Nivelles

Tel: +32 (0)67 280 900
parker.belgium@parker.com

BG – Bulgaria, Sofia

Tel: +359 2 980 1344
parker.bulgaria@parker.com

BY – Belarus, Minsk

Tel: +375 17 209 9399
parker.belarus@parker.com

CH – Switzerland, Etoy

Tel: +41 (0)21 821 87 00
parker.switzerland@parker.com

CZ – Czech Republic, Klecany

Tel: +420 284 083 111
parker.czechrepublic@parker.com

DE – Germany, Kaarst

Tel: +49 (0)2131 4016 0
parker.germany@parker.com

DK – Denmark, Ballerup

Tel: +45 43 56 04 00
parker.denmark@parker.com

ES – Spain, Madrid

Tel: +34 902 330 001
parker.spain@parker.com

FI – Finland, Vantaa

Tel: +358 (0)20 753 2500
parker.finland@parker.com

FR – France, Contamine s/Arve

Tel: +33 (0)4 50 25 80 25
parker.france@parker.com

GR – Greece, Athens

Tel: +30 210 933 6450
parker.greece@parker.com

HU – Hungary, Budaörs

Tel: +36 23 885 470
parker.hungary@parker.com

IE – Ireland, Dublin

Tel: +353 (0)1 466 6370
parker.ireland@parker.com

IT – Italy, Corsico (MI)

Tel: +39 02 45 19 21
parker.italy@parker.com

KZ – Kazakhstan, Almaty

Tel: +7 7273 561 000
parker.easteurope@parker.com

NL – The Netherlands, Oldenzaal

Tel: +31 (0)541 585 000
parker.nl@parker.com

NO – Norway, Asker

Tel: +47 66 75 34 00
parker.norway@parker.com

PL – Poland, Warsaw

Tel: +48 (0)22 573 24 00
parker.poland@parker.com

PT – Portugal, Leca da Palmeira

Tel: +351 22 999 7360
parker.portugal@parker.com

RO – Romania, Bucharest

Tel: +40 21 252 1382
parker.romania@parker.com

RU – Russia, Moscow

Tel: +7 495 645-2156
parker.russia@parker.com

SE – Sweden, Spånga

Tel: +46 (0)8 59 79 50 00
parker.sweden@parker.com

SL – Slovenia, Novo Mesto

Tel: +386 7 337 6650
parker.slovenia@parker.com

TR – Turkey, Istanbul

Tel: +90 216 4997081
parker.turkey@parker.com

UA – Ukraine, Kiev

Tel: +380 44 494 2731
parker.poland@parker.com

UK – United Kingdom, Warwick

Tel: +44 (0)1926 317 878
parker.uk@parker.com

ZA – South Africa, Kempton Park

Tel: +27 (0)11 961 0700
parker.southafrica@parker.com

North America

CA – Canada, Milton, Ontario

Tel: +1 905 693 3000

US – USA, Cleveland

Tel: +1 216 896 3000

Asia Pacific

AU – Australia, Castle Hill

Tel: +61 (0)2-9634 7777

CN – China, Shanghai

Tel: +86 21 2899 5000

HK – Hong Kong

Tel: +852 2428 8008

IN – India, Mumbai

Tel: +91 22 6513 7081-85

JP – Japan, Tokyo

Tel: +81 (0)3 6408 3901

KR – South Korea, Seoul

Tel: +82 2 559 0400

MY – Malaysia, Shah Alam

Tel: +60 3 7849 0800

NZ – New Zealand, Mt Wellington

Tel: +64 9 574 1744

SG – Singapore

Tel: +65 6887 6300

TH – Thailand, Bangkok

Tel: +662 186 7000

TW – Taiwan, Taipei

Tel: +886 2 2298 8987

South America

AR – Argentina, Buenos Aires

Tel: +54 3327 44 4129

BR – Brazil, Sao Jose dos Campos

Tel: +55 12 4009 3500

CL – Chile, Santiago

Tel: +562 2303 9640

MX – Mexico, Toluca

Tel: +52 72 2275 4200

European Product Information Centre

Free phone: 00 800 27 27 5374

(from AT, BE, CH, CZ, DE, DK, EE, ES, FI,
FR, IE, IL, IS, IT, LU, MT, NL, NO, PL, PT, RU,
SE, SK, UK, ZA)

Parker Hannifin Ltd.

Tachbrook Park Drive

Tachbrook Park,

Warwick, CV34 6TU

United Kingdom

Tel.: +44 (0) 1926 317 878

Fax: +44 (0) 1926 317 855

parker.uk@parker.com

www.parker.com

