



The NSI are dry-break couplings with flat face valves. The compact design make them suitable for reduced spaces. Coupling system with two-hand operation, i.e. both hands are required when connect/disconnect.

No spillage during connection/disconnection. Low pressure drop. Excellent resistance to vibrations and mechanical stresses.

**Working Temperature\***

-20°C up to +200°C (FKM)  
depending on the medium.

\* For temperatures below -20°C and over +200°C and depending on the medium, other seal variants (NBR, EPDM, FFKM) are available.

**Working Pressure**

60 bar

**Material**

**Coupling:** Brass/Stainless Steel

**Plug:** Brass/Stainless Steel

**Seals:** FKM

**Technical Description**

Dead space volume DN 3: 0 ml

Dead space volume DN 6: 0,01 ml

Dead space volume DN 9: 0,04 ml

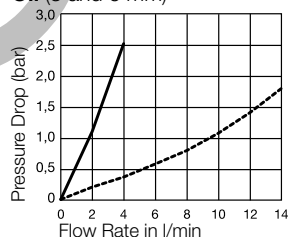
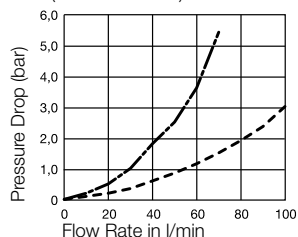
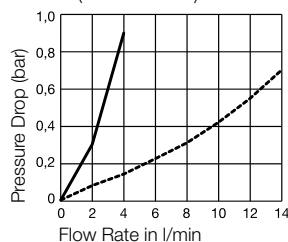
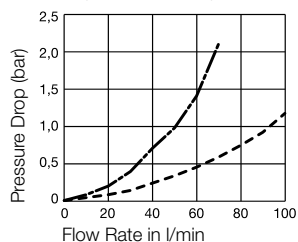
Dead space volume DN 12: 0,1 ml

Connecting Force 0 bar DN 3: 25 N

Connecting Force 0 bar DN 6: 100 N

Connecting Force 0 bar DN 9: 85 N

Connecting Force 0 bar DN 12: 190 N

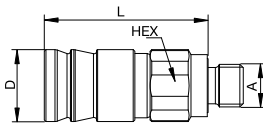

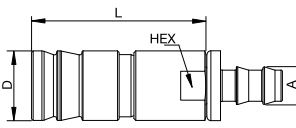
**Flow diagrams****Oil (3 and 6 mm)****Oil (9 and 12 mm)****Water (3 and 6 mm)****Water (9 and 12 mm)**

— DN 3 mm  
- - - DN 6 mm  
— DN 9 mm  
- - - DN 12 mm



## Couplings – flat sealing

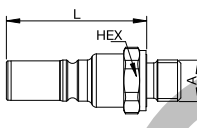
## Series NSI

	DN	Connection A	HEX mm	L mm	D mm	Part Number
 <p>Male Thread</p>	3	G 1/8	14	38	17	NSI-121-2MBE <sup>1</sup>
	6	M 16 x 1,5	20	44,8	22	NSI-251-16MCL-2 <sup>2</sup>
	9	G 3/8	27	63	30	NSI-371-6MBO
	12	G 1/2	35	90,4	42	NSI-501-8MBO
 <p>Female Thread</p>	6	G 1/4	20	57,9	22	NSI-251-4FB
	9	G 3/8	27	72	30	NSI-371-6FB
	12	G 1/2	35	99,4	42	NSI-501-8FB
 <p>Parker Push-Lok</p>	6	10 mm	20	55,2	22	NSI-251-6PL



## Plugs – flat sealing

## Series NSI

	DN	Connection A	HEX mm	L mm	D mm	Part Number
 <p>Male Thread</p>	3	G 1/8	14	36,5		NSI-122-2MBE <sup>1</sup>
	6	G 1/4	19	44		NSI-252-4MBE <sup>1</sup>
	9	G 3/8	24	60,2		NSI-372-6MBO
	12	G 1/2	32	79,1		NSI-502-8MBO

<sup>1</sup> End connection according to ISO1179-2 ED seal

<sup>2</sup> End connection according to DIN 2353 24° cone



Dry-break cartridge couplings without locking mechanism made of stainless steel. Available in six different sizes for modular block/plate assembly in sensitive environments. Different coupling sizes can be combined to one multicoupling depending on the application requirements.

No spillage and minimum dead space volume. No air inclusion when connecting. Tolerates deviations in axial alignment when installing.

**Working Temperature\***

-15°C up to +200°C (FKM)  
depending on the medium.

\* For temperatures below -15°C and over +200°C and depending on the medium, other seal variants (NBR, EPDM, FFKM) are available.

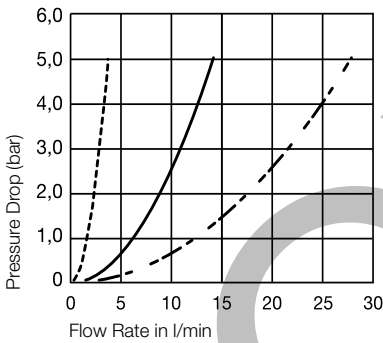
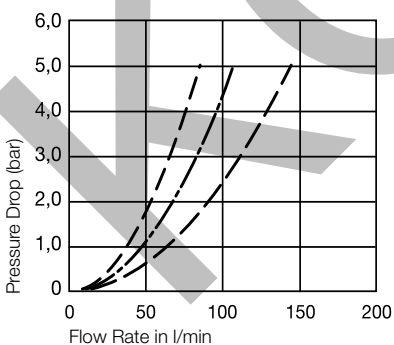
**Working Pressure\*\***

15 bar

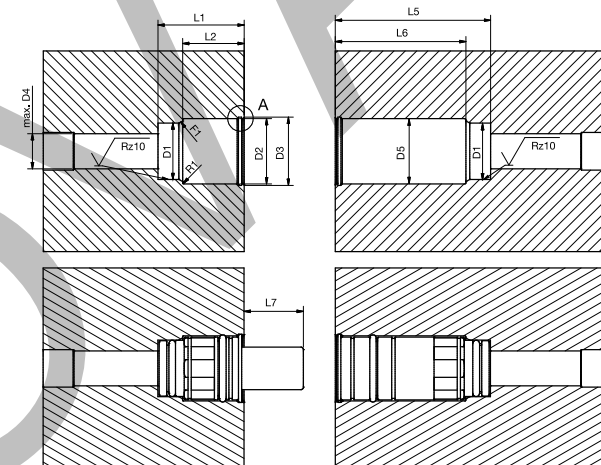
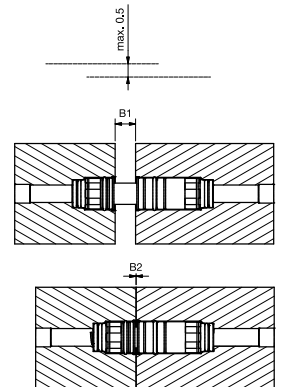
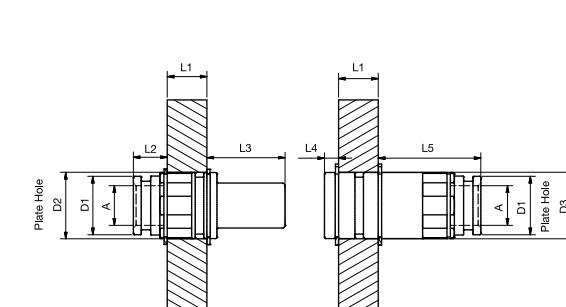
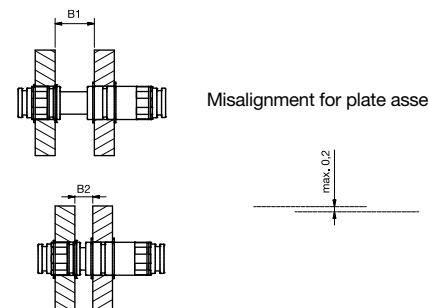
\*\* maximum static working pressure with design factor 4 to 1.

**Material**

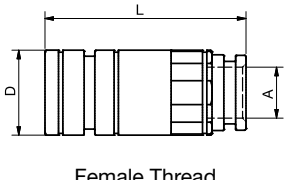
**Coupling:** AISI 316 L  
**Plug:** AISI 316 L  
**Seals:** FKM

**Flow diagrams****Water (3, 4 and 6 mm)****Water (9, 12 and 19 mm)**

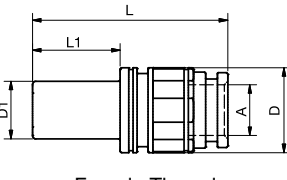
----- 3 mm      - - - - - 9 mm  
——— 4 mm      - - - - - 12 mm  
- · - · - 6 mm      - - - - - 19 mm

**Technical Features for block- and plate assembly –** Tolerances for production of the holder on request.**Block Assembly****Misalignment for block assembly****Plate Assembly****Misalignment for plate assembly**

**Couplings – flat sealing****Series 200KLEK**

	Nominal Diameter mm	Connection A	L mm	L1 mm	D mm	D1 mm	Part Number
	3	G 1/16	21,50		11,00		203KLIW08EVXEK
	4	G 1/8	35,70		16,00		204KLIW10EVXEK
	6	G 1/4	53,70		21,00		206KLIW13EVXEK
	9	G 3/8	59,10		25,00		209KLIW17EVXEK
	12	G 1/2	70,90		32,00		212KLIW21EVXEK
	19	G 3/4	77,00		44,00		219KLIW26EVXEK

**Plugs – flat sealing****Series 200KLEK**

	Nominal Diameter mm	Connection A	L mm	L1 mm	D mm	D1 mm	Part Number
	3	G 1/16	28,70	10,75	11,00	5,30	203SLIW08EVXEK
	4	G 1/8	41,90	15,00	16,00	8,40	204SLIW10EVXEK
	6	G 1/4	51,15	19,00	21,00	12,50	206SLIW13EVXEK
	9	G 3/8	57,40	25,80	25,00	17,00	209SLIW17EVXEK
	12	G 1/2	69,70	28,00	30,00	20,00	212SLIW21EVXEK
	19	G 3/4	82,40	32,45	41,00	30,00	219SLIW26EVXEK

**Block Assembly**

ND mm	L1 mm	L2 mm	L3 mm	L4 mm	L5 mm	L6 mm	L7 mm	D1 mm	D2 mm	D3 mm	D4 max. mm	D5 mm	R1 max. mm	F1	F2	F3	B1	B2
3	20,10	15,00	2,10	1,10	23,60	18,50	8,75	10,00	12,00	12,50	8,00	12,00	0,50	0,8x30°	–	0,5x45°	5,00	0
4	29,00	22,50	2,10	1,10	37,80	31,35	13,00	14,00	17,00	17,80	10,00	17,00	0,50	1,2x30°	0,5x30°	0,5x45°	8,65	0
6	34,25	26,65	2,10	1,10	55,80	48,20	17,00	18,50	22,00	23,00	12,00	22,00	0,50	1,3x30°	0,5x30°	0,5x45°	11,40	0
9	33,80	24,30	2,30	1,30	61,30	51,80	23,60	22,50	26,00	27,20	14,00	26,00	0,50	1,5x30°	0,5x30°	0,5x45°	16,30	0
12	44,00	34,40	2,30	1,30	73,20	63,60	25,80	28,00	31,00	32,70	16,00	33,00	0,50	1,5x30°	0,8x30°	0,5x45°	15,80	0
19	53,15	41,50	3,15	1,85	80,20	68,50	29,25	33,00	42,00	44,50	23,00	45,00	1,50	1,5x30°	1,0x30°	0,8x45°	20,30	0

**Plate Assembly**

ND mm	L1 mm	L2 mm	L3 mm	L4 mm	L5 mm	L6 mm	L7 mm	D1 mm	D2 mm	D3 mm	Connecton A	F1	F2	F3	B1	B2
3	5,00	11,00	12,75	5,50	11,00			9,80	11,2	11,2	G 1/16				16,70	11,70
4	15,00	9,80	17,20	5,50	15,35			13,80	16,2	16,2	G 1/8				20,50	12,70
6	15,00	13,15	23,00	5,50	33,20			18,30	21,2	21,2	G 1/4				25,00	13,50
9	15,00	12,80	29,60	5,30	38,80			22,30	25,2	25,2	G 3/8				29,80	13,50
12	15,00	22,90	31,80	5,30	50,60			27,80	30,2	32,2	G 1/2				29,40	12,30
19	15,00	32,00	35,40	4,40	57,60			32,80	41,2	44,2	G 3/4				33,85	12,30

⚠ Please consider our security advices on the pages 12/13 ⚠



The NSP are dry-break couplings with flat face valves. The compact design make them suitable for reduced spaces. Coupling system with single-hand operation.

No spillage during connection/disconnection. Push to connect function. Low pressure drop. Specific design for cooling applications. Can be used either with water and heat transfer oils. Excellent resistance to vibrations and mechanical stresses.

#### Working Temperature\*

-20°C up to +200°C (FKM)  
depending on the medium.

\* For temperatures below -20°C and over +200°C and depending on the medium, other seal variants (NBR, EPDM, FFKM) are available.



#### Working Pressure\*\*

60 bar

\*\* maximum static working pressure with safety factor 4 to 1.

#### Material

**Coupling:** Brass/Stainless Steel

**Plug:** Brass/Stainless Steel

**Seals:** FKM

#### Technical Description

Dead space volume DN 6: 0,01 ml

Dead space volume DN 9: 0,04 ml

Dead space volume DN 12: 0,1 ml

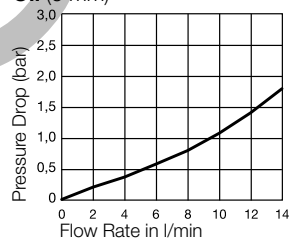
Connecting Force 0 bar DN 6: 110 N

Connecting Force 0 bar DN 9: 95 N

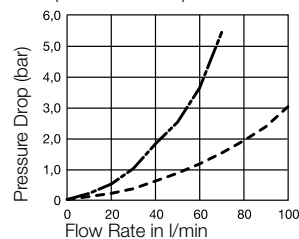
Connecting Force 0 bar DN 12: 195 N

#### Flow diagrams

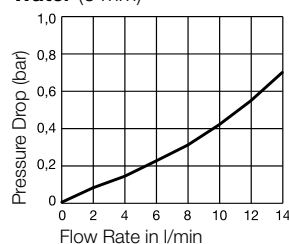
##### Oil (6 mm)



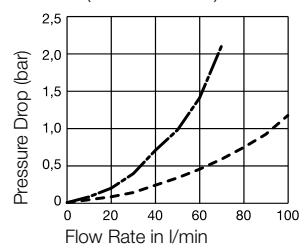
##### Oil (9 and 12 mm)



##### Water (6 mm)



##### Water (9 and 12 mm)



— DN 6 mm  
- - - DN 9 mm  
- - - DN 12 mm



## Couplings – flat sealing

## Series NSP

	DN	Connection A	HEX mm	L mm	D mm	Part Number
<p>Male Thread</p>	6	G 1/4	21	51,7	22	NSP-251-4MBE <sup>1</sup>
	6	M 16 x 1,5	20	44,8	22	NSP-251-16MCL <sup>2</sup>
	9	G 3/8	27	63	30	NSP-371-6MBO
	12	G 1/2	35	90,4	42	NSP-501-8MBO
<p>Female Thread</p>	6	G 1/4	20	57,9	22	NSP-251-4FB
	9	G 3/8	27	72	30	NSP-371-6FB
	12	G 1/2	35	99,4	42	NSP-501-8FB
<p>Hose Barb</p>	6	10 mm	20	55,2	22	NSP-251-6PL



## Plugs – flat sealing

## Series NSI

	DN	Connection A	HEX mm	L mm	D mm	Part Number
<p>Male Thread</p>	6	G 1/4	19	44		NSI-252-4MBE <sup>1</sup>
	9	G 3/8	24	60,2		NSI-372-6MBO
	12	G 1/2	32	79,1		NSI-502-8MBO

<sup>1</sup> End connection according to ISO1179-2 ED seal

<sup>2</sup> End connection according to DIN 2353 24° cone