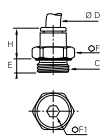


## 6901 Stud Fitting, Male BSPP and Metric Thread

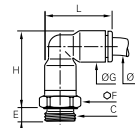
FDA chemical Nickel-plated brass, EPDM



| ØD | C      |                   | E   | F  | F1  | H    | Kg    |
|----|--------|-------------------|-----|----|-----|------|-------|
| 4  | M5x0.8 | <b>6901 04 19</b> | 3   | 8  | 2.5 | 14   | 0.003 |
|    | G1/8   | <b>6901 04 10</b> | 5.5 | 13 | 3   | 11.5 | 0.007 |
| 6  | M5x0.8 | <b>6901 06 19</b> | 3   | 11 | 2.5 | 16   | 0.005 |
|    | G1/8   | <b>6901 06 10</b> | 4.5 | 13 | 4   | 13   | 0.007 |
| 8  | G1/4   | <b>6901 06 13</b> | 5.5 | 16 | 4   | 12.5 | 0.011 |
|    | G1/8   | <b>6901 08 10</b> | 4.5 | 13 | 5   | 20.5 | 0.011 |
| 10 | G1/4   | <b>6901 08 13</b> | 5.5 | 16 | 6   | 19.5 | 0.016 |
|    | G3/8   | <b>6901 08 17</b> | 5.5 | 20 | 6   | 18   | 0.022 |
| 12 | G1/4   | <b>6901 10 13</b> | 5.5 | 16 | 7   | 23   | 0.018 |
|    | G3/8   | <b>6901 10 17</b> | 5.5 | 20 | 8   | 19.5 | 0.021 |
| 12 | G1/2   | <b>6901 10 21</b> | 7   | 24 | 8   | 18   | 0.033 |
|    | G1/2   | <b>6901 12 21</b> | 7   | 24 | 10  | 22.5 | 0.035 |

## 6999 Stud Elbow, Male BSPP and Metric Thread

Bio-based polymer, FDA chemical Nickel-plated brass, EPDM

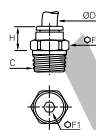


| ØD | C      |                   | E   | F  | G    | H    | L    | Kg    |
|----|--------|-------------------|-----|----|------|------|------|-------|
| 4  | M5x0.8 | <b>6999 04 19</b> | 3.5 | 8  | 8.5  | 23   | 19   | 0.005 |
|    | G1/8   | <b>6999 04 10</b> | 4.5 | 13 | 8.5  | 22.5 | 19   | 0.009 |
| 6  | M5x0.8 | <b>6999 06 19</b> | 3.5 | 10 | 10.5 | 26.5 | 22.5 | 0.008 |
|    | G1/8   | <b>6999 06 10</b> | 4.5 | 13 | 10.5 | 26.5 | 22.5 | 0.011 |
| 8  | G1/4   | <b>6999 06 13</b> | 5.5 | 16 | 10.5 | 26.5 | 22.5 | 0.016 |
|    | G1/8   | <b>6999 08 10</b> | 4.5 | 13 | 13.5 | 35   | 29.5 | 0.018 |
| 10 | G1/4   | <b>6999 08 13</b> | 5.5 | 16 | 13.5 | 33   | 29.5 | 0.020 |
|    | G3/8   | <b>6999 08 17</b> | 5.5 | 20 | 13.5 | 33   | 29.5 | 0.028 |
| 12 | G1/4   | <b>6999 10 13</b> | 5.5 | 16 | 16   | 40.5 | 34   | 0.029 |
|    | G3/8   | <b>6999 10 17</b> | 5.5 | 20 | 16   | 39   | 34   | 0.037 |
| 12 | G1/2   | <b>6999 10 21</b> | 7   | 24 | 16   | 39   | 34   | 0.042 |
|    | G3/8   | <b>6999 12 17</b> | 5.5 | 20 | 19   | 42   | 40   | 0.040 |
| 12 | G1/2   | <b>6999 12 21</b> | 7   | 24 | 19   | 42   | 40   | 0.049 |

The body swivels for positioning purposes.

## 6905 Stud Fitting, Male BSPT Thread

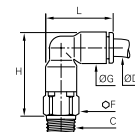
FDA chemical Nickel-plated brass, EPDM



| ØD | C    |                   | F  | F1 | H    | Kg    |
|----|------|-------------------|----|----|------|-------|
| 4  | R1/8 | <b>6905 04 10</b> | 10 | 3  | 9.5  | 0.005 |
|    | R1/4 | <b>6905 04 13</b> | 14 | 3  | 6.5  | 0.012 |
| 6  | R1/8 | <b>6905 06 10</b> | 10 | 4  | 11.5 | 0.005 |
|    | R1/4 | <b>6905 06 13</b> | 14 | 4  | 8.5  | 0.011 |
| 8  | R1/8 | <b>6905 08 10</b> | 13 | 5  | 20   | 0.011 |
|    | R1/4 | <b>6905 08 13</b> | 14 | 6  | 17   | 0.014 |
| 10 | R3/8 | <b>6905 08 17</b> | 17 | 6  | 13   | 0.021 |
|    | R1/4 | <b>6905 10 13</b> | 16 | 7  | 20   | 0.017 |
| 12 | R3/8 | <b>6905 10 17</b> | 17 | 8  | 16.5 | 0.019 |
|    | R1/2 | <b>6905 10 21</b> | 21 | 8  | 14   | 0.037 |
| 12 | R3/8 | <b>6905 12 17</b> | 19 | 9  | 24   | 0.028 |
|    | R1/2 | <b>6905 12 21</b> | 21 | 10 | 19.5 | 0.036 |

## 6909 Stud Elbow, Male BSPT Thread

Bio-based polymer, FDA chemical Nickel-plated brass, EPDM

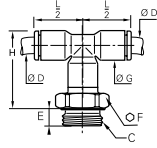


| ØD | C    |                   | F  | G    | H    | L    | Kg    |
|----|------|-------------------|----|------|------|------|-------|
| 4  | R1/8 | <b>6909 04 10</b> | 10 | 8.5  | 23   | 19   | 0.008 |
|    | R1/4 | <b>6909 04 13</b> | 14 | 8.5  | 23.5 | 19   | 0.018 |
| 6  | R1/8 | <b>6909 06 10</b> | 10 | 10.5 | 27   | 22.5 | 0.010 |
|    | R1/4 | <b>6909 06 13</b> | 14 | 10.5 | 27.5 | 22.5 | 0.020 |
| 8  | R1/8 | <b>6909 08 10</b> | 13 | 13.5 | 33.5 | 29.5 | 0.018 |
|    | R1/4 | <b>6909 08 13</b> | 14 | 13.5 | 32.5 | 29.5 | 0.022 |
| 10 | R3/8 | <b>6909 08 17</b> | 17 | 13.5 | 33   | 29.5 | 0.032 |
|    | R1/4 | <b>6909 10 13</b> | 15 | 16   | 39.5 | 34   | 0.031 |
| 12 | R3/8 | <b>6909 10 17</b> | 17 | 16   | 39.5 | 34   | 0.041 |
|    | R1/2 | <b>6909 10 21</b> | 21 | 16   | 39.5 | 34   | 0.060 |
| 12 | R3/8 | <b>6909 12 17</b> | 19 | 19   | 45.5 | 40.5 | 0.051 |
|    | R1/2 | <b>6909 12 21</b> | 21 | 19   | 45.5 | 40.5 | 0.065 |

The body swivels for positioning purposes.

## 6998 Stud Branch Tee, Male BSPP and Metric Thread

Bio-based polymer, FDA chemical Nickel-plated brass, EPDM

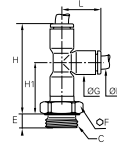


| ØD | C      |                   | E   | F  | G    | H    | L/2  | Kg    |
|----|--------|-------------------|-----|----|------|------|------|-------|
| 4  | M5x0.8 | <b>6998 04 19</b> | 3.5 | 8  | 8.5  | 24   | 14   | 0.006 |
|    | G1/8   | <b>6998 04 10</b> | 5   | 13 | 8.5  | 22   | 14   | 0.009 |
|    | G1/4   | <b>6998 04 13</b> | 5.5 | 16 | 8.5  | 22   | 14   | 0.014 |
| 6  | M5x0.8 | <b>6998 06 19</b> | 3.5 | 10 | 10.5 | 30   | 16   | 0.009 |
|    | G1/4   | <b>6998 06 13</b> | 5.5 | 16 | 10.5 | 29   | 16   | 0.016 |
| 8  | G1/8   | <b>6998 08 10</b> | 4.5 | 13 | 13.5 | 38   | 23   | 0.019 |
|    | G1/4   | <b>6998 10 13</b> | 5.5 | 16 | 16   | 43   | 26.5 | 0.032 |
| 10 | G3/8   | <b>6998 10 17</b> | 5.5 | 20 | 16   | 43   | 26.5 | 0.055 |
|    | G1/2   | <b>6998 10 21</b> | 7.5 | 24 | 16   | 43   | 26.5 | 0.051 |
| 12 | G3/8   | <b>6998 12 17</b> | 5.5 | 20 | 19   | 45.5 | 31   | 0.042 |
|    | G1/2   | <b>6998 12 21</b> | 7   | 24 | 19   | 45.5 | 31   | 0.049 |

The body swivels for positioning purposes.

## 6993 Stud Run Tee, Male BSPP and Metric Thread

Bio-based polymer, FDA chemical Nickel-plated brass, EPDM

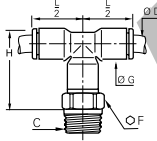


| ØD | C      |                   | E   | F  | G    | H  | H1 | L    | Kg    |
|----|--------|-------------------|-----|----|------|----|----|------|-------|
| 4  | M5x0.8 | <b>6993 04 19</b> | 3.5 | 8  | 8.5  | 32 | 19 | 14.5 | 0.006 |
|    | G1/8   | <b>6993 04 10</b> | 5   | 13 | 8.5  | 30 | 18 | 14.5 | 0.009 |
|    | G1/4   | <b>6993 04 13</b> | 5.5 | 16 | 8.5  | 30 | 18 | 14.5 | 0.014 |
| 6  | M5x0.8 | <b>6993 06 19</b> | 3.5 | 10 | 10.5 | 39 | 23 | 17.5 | 0.009 |
|    | G1/4   | <b>6993 06 13</b> | 5.5 | 16 | 10.5 | 38 | 22 | 17.5 | 0.016 |
| 8  | G1/8   | <b>6993 08 10</b> | 4.5 | 13 | 13.5 | 54 | 31 | 23   | 0.019 |
|    | G3/8   | <b>6993 08 17</b> | 5.5 | 20 | 13.5 | 52 | 29 | 23   | 0.030 |
| 10 | G3/8   | <b>6993 10 17</b> | 5.5 | 20 | 16   | 61 | 35 | 26.5 | 0.055 |
|    | G1/2   | <b>6993 10 21</b> | 7.5 | 24 | 16   | 61 | 35 | 26.5 | 0.051 |
| 12 | G3/8   | <b>6993 12 17</b> | 5.5 | 20 | 19   | 67 | 36 | 31   | 0.042 |
|    | G1/2   | <b>6993 12 21</b> | 7   | 24 | 19   | 67 | 36 | 31   | 0.049 |

The body swivels for positioning purposes.

## 6908 Stud Branch Tee, Male BSPT Thread

Bio-based polymer, FDA chemical Nickel-plated brass, EPDM

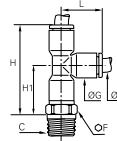


| ØD | C    |                   | F  | G    | H    | L/2  | Kg    |
|----|------|-------------------|----|------|------|------|-------|
| 4  | R1/8 | <b>6908 04 10</b> | 10 | 8.5  | 17   | 14   | 0.009 |
|    | R1/4 | <b>6908 04 13</b> | 14 | 8.5  | 17   | 14   | 0.020 |
| 6  | R1/4 | <b>6908 06 13</b> | 14 | 10.5 | 23   | 16   | 0.011 |
|    | R1/8 | <b>6908 08 10</b> | 13 | 13.5 | 30   | 23   | 0.020 |
| 8  | R1/4 | <b>6908 08 13</b> | 14 | 13.5 | 30   | 23   | 0.025 |
|    | R3/8 | <b>6908 08 17</b> | 17 | 13.5 | 30   | 23   | 0.036 |
|    | R1/4 | <b>6908 10 13</b> | 15 | 16   | 34.5 | 26.5 | 0.033 |
| 10 | R3/8 | <b>6908 10 17</b> | 17 | 16   | 34.5 | 26.5 | 0.043 |
|    | R1/2 | <b>6908 10 21</b> | 21 | 16   | 34.5 | 26.5 | 0.065 |
| 12 | R3/8 | <b>6908 12 17</b> | 19 | 19   | 40.5 | 31   | 0.053 |
|    | R1/2 | <b>6908 12 21</b> | 21 | 19   | 40.5 | 31   | 0.061 |

The body swivels for positioning purposes.

## 6903 Stud Run Tee, Male BSPT Thread

Bio-based polymer, FDA chemical Nickel-plated brass, EPDM



| ØD | C    |                   | F  | G    | H  | H1 | L    | Kg    |
|----|------|-------------------|----|------|----|----|------|-------|
| 4  | R1/8 | <b>6903 04 10</b> | 10 | 8.5  | 31 | 18 | 14.5 | 0.009 |
|    | R1/4 | <b>6903 04 13</b> | 14 | 8.5  | 31 | 19 | 14.5 | 0.020 |
| 6  | R1/4 | <b>6903 06 13</b> | 14 | 10.5 | 39 | 23 | 17.5 | 0.011 |
|    | R1/8 | <b>6903 08 10</b> | 13 | 13.5 | 53 | 30 | 23   | 0.020 |
| 8  | R1/4 | <b>6903 08 13</b> | 14 | 13.5 | 52 | 29 | 23   | 0.025 |
|    | R3/8 | <b>6903 08 17</b> | 17 | 13.5 | 52 | 29 | 23   | 0.036 |
|    | R1/4 | <b>6903 10 13</b> | 15 | 16   | 61 | 35 | 26.5 | 0.033 |
| 10 | R3/8 | <b>6903 10 17</b> | 17 | 16   | 61 | 35 | 26.5 | 0.043 |
|    | R1/2 | <b>6903 10 21</b> | 21 | 16   | 61 | 35 | 26.5 | 0.065 |
| 12 | R3/8 | <b>6903 12 17</b> | 19 | 19   | 70 | 39 | 31   | 0.053 |
|    | R1/2 | <b>6903 12 21</b> | 21 | 19   | 70 | 39 | 31   | 0.061 |

The body swivels for positioning purposes.