

Blocking Fittings



When the pilot signal is removed, these fittings ensure the safety of operators and protect the installation by cutting off the supply of compressed air in the circuit.

Ø metric:
4 to 12 mm

Technical Characteristics

- **Compatible Fluids:** compressed air
- **Working Pressure:** 1 to 10 bar
- **Working Temperature:** -20°C to +70°C
-25°C to +70°C (metal version)

Connection	Supply Flow 6 bar	Pilot and depilot threshold depending on supply pressure					
		2 bar	4 bar	6 bar	8 bar	10 bar	
ØD 6 and 8 mm, threads G1/8, G1/4, R1/8, R1/4	650NI /min	Pilot Pressure	2.40	2.90	3.30	3.60	4.00
	650NI /min	Depilot Pressure	1.50	1.80	2.15	2.40	2.80
ØD 10 and 12 mm, threads G3/8, G1/2, R3/8, R1/2	1600NI /min	Pilot Pressure	2.70	3.20	3.50	3.80	4.10
	1600NI /min	Depilot Pressure	1.40	1.80	2.10	2.40	2.70

Reliable performance is dependent upon the type of fluid conveyed and component materials being used.

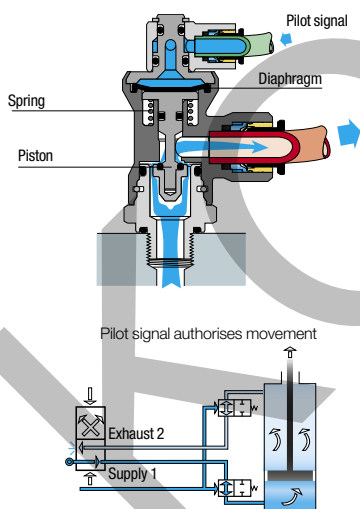
Use is guaranteed with a vacuum of 755 mm Hg (99% vacuum).

Advantages

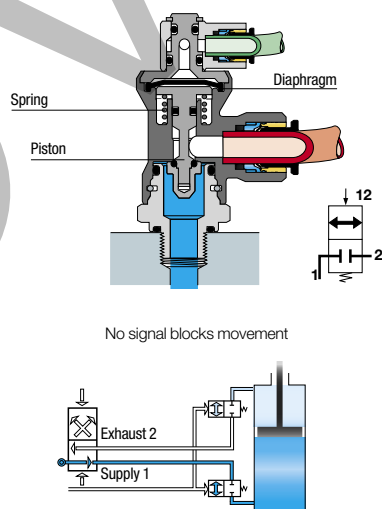
- Mounted in pairs on a cylinder
- Compact size to fit into any configuration
- Proven endurance according to the requirements of DI 2006/42/EC (B10d = 10 000 000 cycles at a frequency of 1Hz, according to ISO 19973)
- Can be rotated 360° during assembly
- Spark resistance, for welding applications

Operation

Cylinder in Operation (pilot signal active)

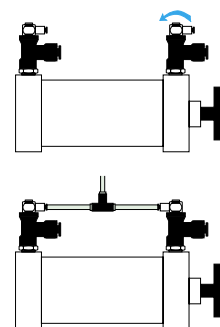


Cylinder Blocked (pilot signal removed)



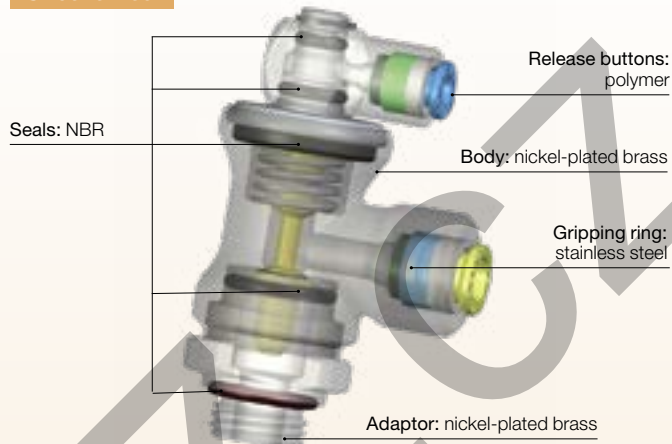
Installation

Mounted in pairs, blocking fittings are installed directly on the cylinder. Being fully orientable, they offer excellent flexibility in the design and installation of pneumatic circuits.



Component Materials

Silicone-free



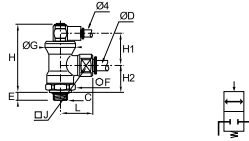
Regulations

- RoHS
- PED
- REACH
- B10d >110 millions of cycles

Blocking Fittings

7880 Blocking Fitting, Male BSPP Thread

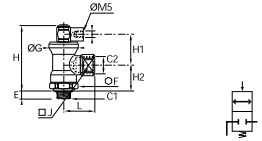
Nickel-plated brass, NBR



ØD	C		E	F	G	H	H1	H2	J	L	Kg
6	G1/8	7880 06 10	5.5	21	24	53	24.5	21	17	28	0.127
	G1/4	7880 06 13	6.5	21	24	53	24.5	21	17	28	0.130
8	G1/4	7880 08 13	6.5	21	24	53	24.5	21	17	28	0.124
	G3/8	7880 08 17	7.5	21	24	53	24.5	21	17	28	0.127
10	G3/8	7880 10 17	7.5	24	28	58	25	25	27	35	0.210
12	G1/2	7880 12 21	9	24	28	58	25	25	27	37.5	0.220

7881 Blocking Fitting, Male/Female BSPP Thread

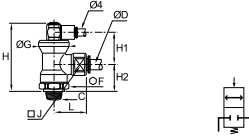
Nickel-plated brass, NBR



C1	C2		E	F	G	H	H1	H2	J	L	Kg
G1/8	G1/4	7881 13 10	5.5	21	24	53	24.5	21	17	25.5	0.119
G1/4	G1/4	7881 13 13	6.5	21	24	53	24.5	21	17	25.5	0.120
G3/8	G3/8	7881 17 17	7.5	24	28	58	25	25	27	34	0.208
G1/2	G1/2	7881 21 21	9	24	28	58	25	25	27	40	0.221

7885 Blocking Fitting, Male BSPT Thread

Nickel-plated brass, NBR

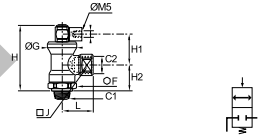


ØD	C		F	G	H	H1	H2	J	L	Kg
6	R1/8	7885 06 10	21	24	51.5	25	20	17	28	0.127
	R1/4	7885 06 13	21	24	51.5	25	20	17	28	0.131
8	R1/4	7885 08 13	21	24	51.5	25	20	17	28	0.126
	R3/8	7885 08 17	21	24	51.5	25	20	17	28	0.131
10	R3/8	7885 10 17	24	28	57	25	24	27	35	0.217
12	R1/2	7885 12 21	24	28	57	25	24	27	37.5	0.229

Pre-coated thread

7886 Blocking Fitting, Male/Female BSPT Thread

Nickel-plated brass, NBR

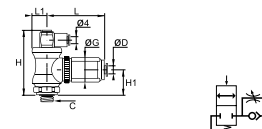


C1	C2		F	G	H	H1	H2	J	L	Kg
R1/8	R1/4	7886 13 10	21	24	51.5	25	20	17	26.5	0.121
R1/4	R1/4	7886 13 13	21	24	51.5	25	20	17	26.5	0.126
R3/8	R3/8	7886 17 17	24	28	57	25	24	27	34	0.225
R1/2	R1/2	7886 21 21	24	28	57	25	24	27	40	0.235

Pre-coated thread

7883 Blocker/Flow Regulator, Exhaust, Male BSPP Thread

Nickel-plated brass, technical polymer, NBR



ØD	C		G	H	H1	L	L max	L1	Kg
4	G1/8	7883 04 10	21.5	53	21	46.5	52	12	0.166
	G1/8	7883 06 10	21.5	53	21	46.5	52	12	0.163
6	G1/4	7883 06 13	21.5	53	21	46.5	52	12	0.166
	G1/4	7883 08 13	27	57.5	24.5	54	60	14	0.252
8	G3/8	7883 08 17	27	57.5	24.5	54	60	14	0.254

Combination of blocking and flow regulation functions
Working temperature: 0 to 70°C

Metal Quick Exhaust Valves



This range of metal quick exhaust valves is offered in nickel-plated brass, aluminium and stainless steel. The exhaust into the atmosphere accelerates the return speed of the cylinder rod.

Technical Characteristics

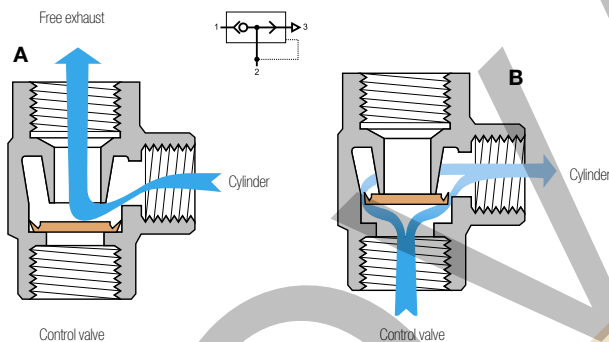
- **Compatible Fluids:** Compressed air
- **Working Pressure:** 7970: 0.7 to 10 bar
7971 and 7899: 2 to 10 bar
- **Working Temperature:** 7970: -20°C to +70°C
7971: -10°C to +70°C
7899: Threads G1/8 and G1/4: -10°C to +120°C
Threads G3/8 to G1: -20°C to +80°C

Advantages

- Cycle time reduction: increased return speed
- Exhaust silencer integrated and 360° orientation available on some versions

Operation

Mounted on Cylinder

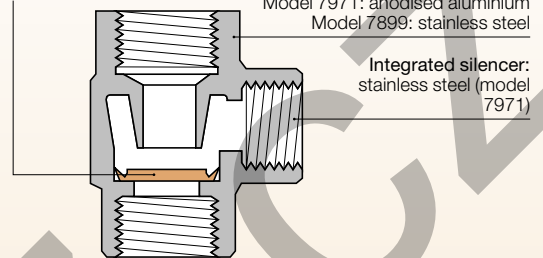


Component Materials

Silicone-free

Lip seals:
7970-7971: polyurethane elastomer
7899: - G1/8 and G1/4 FKM
- G3/8 to G1, polyurethane

Body:
Model 7970: nickel-plated brass
Model 7971: anodised aluminium
Model 7899: stainless steel

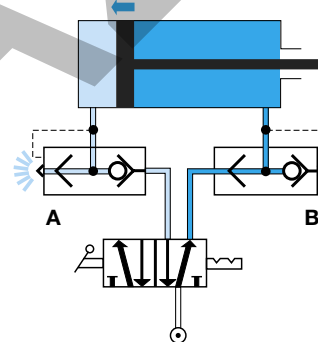


Integrated silencer:
stainless steel (model 7971)

Regulations

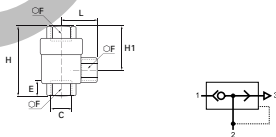
- RoHS
- REACH
- PED

Installation Diagram



7970 Elbow Quick Exhaust Valve, Female BSPP and Metric Thread

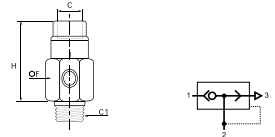
Nickel-plated brass



C	E	F	H	H1	L	Kg
M5x0.8 7970 19 19	5	10	24.8	15.6	4	0.029
G1/8 7970 10 10	7.5	14	42	28	8	0.084
G1/4 7970 13 13	11	19	53	34.5	11	0.150
G3/8 7970 17 17	12	21	58	36	12	0.153
G1/2 7970 21 21	14	26	71	44	14	0.312
G3/4 7970 27 27	16	32	86	52	18	0.449
G1 7970 34 34	19	38	94	56	19	0.528

7971 Elbow Quick Exhaust Valve, Male BSPT/ Female BSPP Thread

Treated aluminium



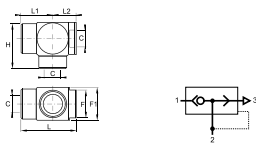
C	C1	F	H	Kg
G1/8	R1/8	7971 10 10	18	32.5 0.013
G1/4	R1/4	7971 13 13	18	35.5 0.018
G3/8	R3/8	7971 17 17	27	45 0.048
G1/2	R1/2	7971 21 21	34	52 0.086

Noise level:
7971 10 10: 70 dBa
7971 13 13: 70 dBa
7971 17 17: 72 dBa
7971 21 21: 88 dBa

Metal Quick Exhaust Valves

7899 Quick Exhaust Valve, Female BSPP Thread

Stainless steel 316L



DN	C		F	F1	H	L	L1	L2	Kg
7	G1/8	7899 00 10	17	22	31.5	37.5	21	16.5	0.096
	G1/4	7899 00 13	17	22	31.5	37.5	21	16.5	0.083
9	G3/8	7899 00 17	22	26	37	44.5	25.5	19	0.140
12	G1/2	7899 00 21	27	32	45	54	31	23	0.235
18	G3/4	7899 00 27	38	46	65	79	44	35	0.800
	G1	7899 00 34	38	46	65	79	44	35	0.667

Noise level:

7971 10 10: 70 dBa

7971 13 13: 70 dBa

7971 17 17: 72 dBa

7971 21 21: 88 dBa

KOOLVANZ.COM

Soft Start Fittings



To prevent the risk of industrial accidents, the pressure increase in the downstream circuit allows soft start of the installation.

Ø metric:
8 to 10 mm

Technical Characteristics

- **Compatible Fluids:** Compressed air
- **Working Pressure:** 3 to 10 bar
- **Working Temperature:** -15°C to +60°C

Max. Tightening Torques	Threads		daN.m
	G1/4		1.3
	G3/8		1.5
G1/2		1.8	

Flow Characteristics	Model	Flow at 6 bar	Kv
	7860 08 13	1500 NI/min	0.80
	7860 10 13	2100 NI/min	1.20
	7860 10 17	2200 NI/min	1.30
	7870 08 13	1500 NI/min	0.80
	7870 10 13	2000 NI/min	1.15
7870 10 17	2000 NI/min	1.15	

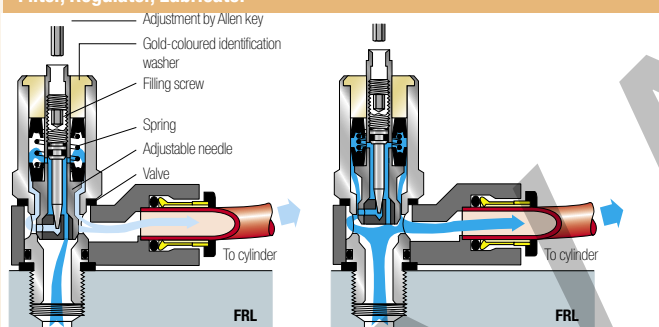
Component Materials

Silicone-free

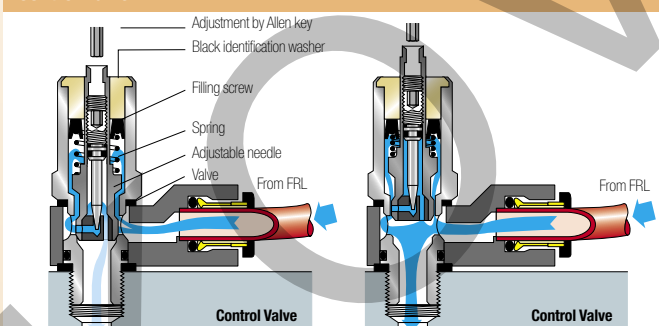


Operation

Filter, Regulator, Lubricator



Control Valve



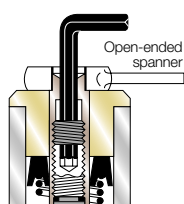
Adjustment of the Filling Screw

Adjusting the screw to regulate the flow of air optimises the time taken to pressurise depending on the air volume to be refilled and the system requirements.

To adjust:

- immobilise the piston using a spanner
- adjust the screw with an Allen key
 - 1.5 mm key for 8 mm diameter
 - 2.5 mm key for 10 and 12 mm diameter

Max. tightening torque: 0.1 daN.m



Advantages

Protection of equipment and personnel:

- Prevents the risk of damage after any stoppage which requires the system to be vented
- Returns the control valve to its initial position in total safety
- Adjustment of the pressurisation speed

Mounted on FRL:

- 7860: yellow identification washer
- Protection for the whole system
- Simultaneous pressurisation speed of the whole system

Mounted on Control Valve:

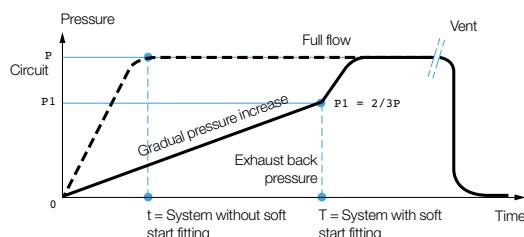
- 7870: black identification washer
- Protection of individual circuits
- Mounted on the control valve, it optimises the pressurisation speed of a specific cylinder

Regulations

- RoHS
- REACH
- PED

Cylinder Pressure Cycle

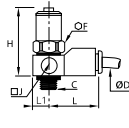
When the downstream pressure reaches 2/3 of the supply pressure, full flow is automatically established



Soft Start Fittings

7860 Soft Start Fitting for Isolating Valve, Male BSPP Thread

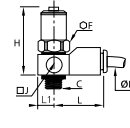
Technical polymer, Nickel-plated brass, NBR



ØD	C		F	H max	H min	J	L	L1	Kg
8	G1/4	7860 08 13	17	61	54	20	35	10	0.064
10	G1/4	7860 10 13	22	62	55	25	41	12.5	0.112
	G3/8	7860 10 17	22	62	55	25	41	12.5	0.115

7870 Soft Start Fitting for Control Valve, Male BSPP Thread

Technical polymer, Nickel-plated brass, NBR

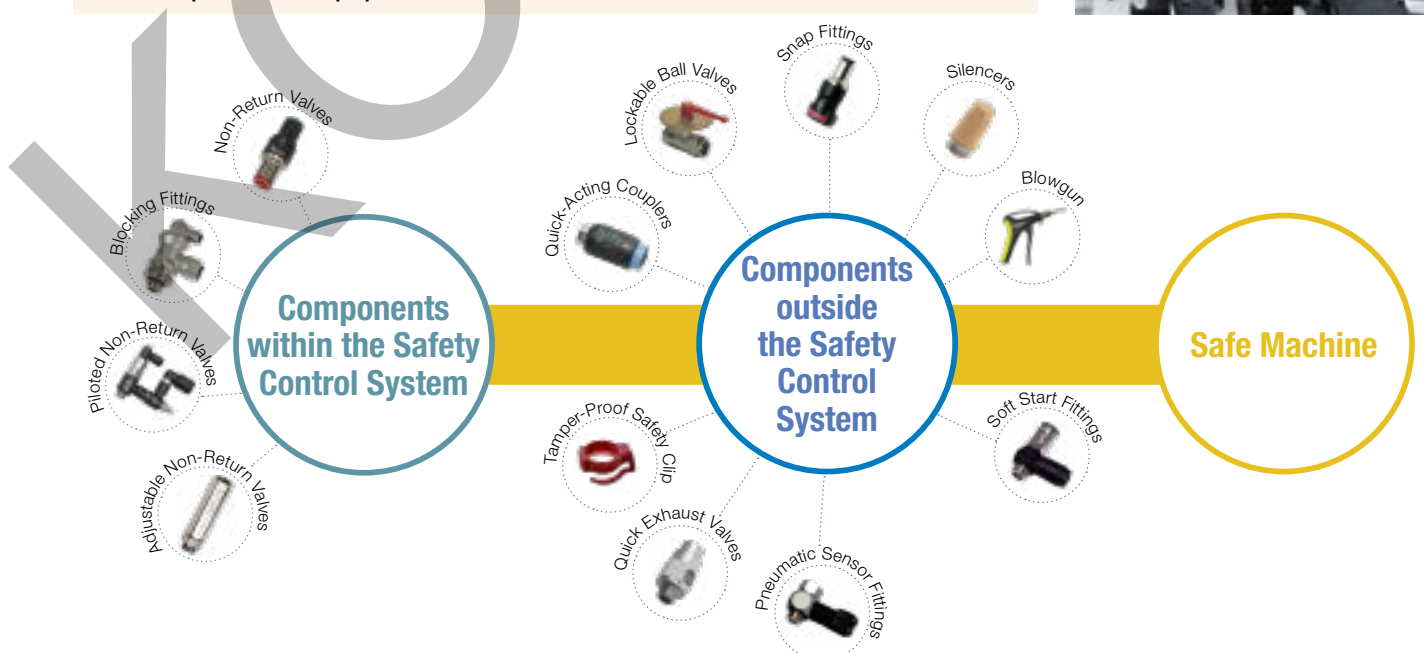


ØD	C		F	H max	H min	J	L	L1	Kg
8	G1/4	7870 08 13	17	61	54	20	35	10	0.066
10	G1/4	7870 10 13	22	62	55	25	41	12.5	0.113
	G3/8	7870 10 17	22	62	55	25	41	12.5	0.116

Our Safety Programm: Conformity to 2006/42/EC Directive and ISO 13849-1 Standard

More than 250 dedicated part numbers for:

- Zero accident for our customers
- Machine integrity
- Compliance of equipment



Pressure Regulator Fittings



Pressure regulators stabilise at the maximum determined value the pressure, whatever the fluctuations of the pressure upstream.

Ø metric:
4 to 10 mm

Technical Characteristics (7300)

- **Compatible Fluids:** Compressed air
- **Working Pressure:** Upstream pressure: 1 to 16 bar
Downstream pressure: 1 to 8 bar
- **Working Temperature:** -10°C to +70°C

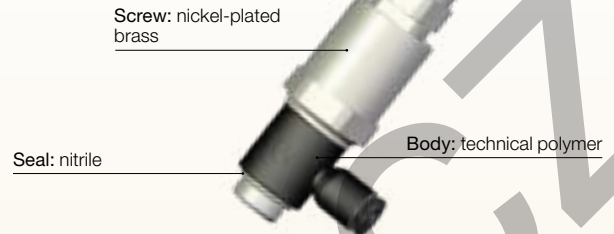
Tightening Torque (BSPT)	Thread	G1/8	G1/4	G3/8
	daN.m		0.4	0.5

Advantages

- Lockable adjustment possible of the setpoint
- Output pressure adjustment options marked on the screw
- Installation in a manifold allows optimum output pressures to be delivered to specific parts of the circuit
- Designed for applications where cylinder force needs to be controlled: marking, sleeving, crimping cylinders etc.

Component Materials (7300)

Silicone-free



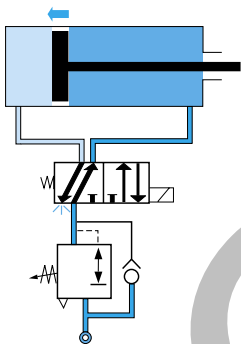
Regulations

- RoHS
- REACH
- PED

Operation

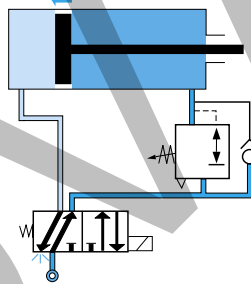
Mounting Upstream of the Control Valve

Adjustment of the piston feed pressure in both directions

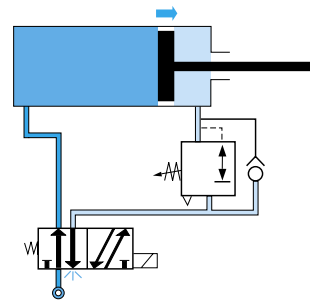


Mounting Downstream of the Control Valve

Phase 1: adjustment of the piston speed in a single direction

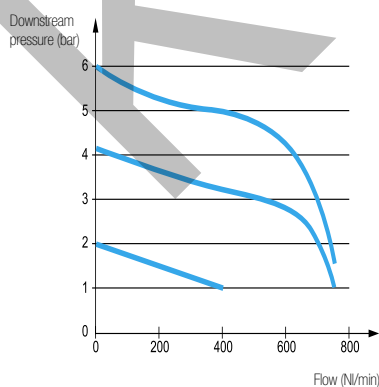


Phase 2: in return direction, pressure is supplied through the control valve

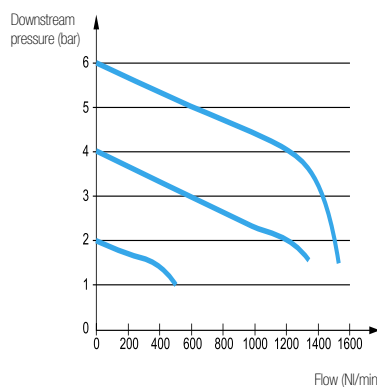


Flow Characteristics at 7 bar (Nl/min)

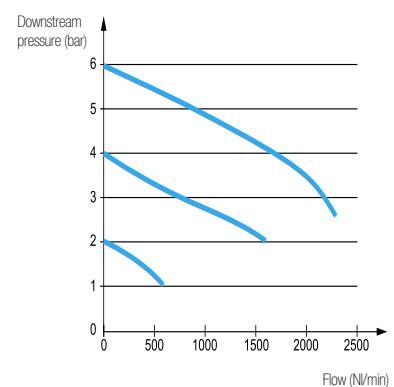
G1/8 Models



G1/4 Models



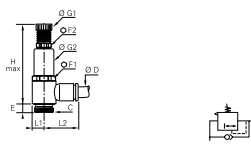
G3/8 Models



Pressure Regulator Fittings

7300 Pressure Regulator, Male BSPP Thread

Technical polymer, Nickel-plated brass, NBR



ØD	C		E	F1	F2	G1	G2	H max	L1	L2	Kg
4	G1/8	7300 04 10	4.5	17	13	14	17	65	7	18.5	0.047
	G1/8	7300 06 10	4.5	17	13	14	17	65	7	20	0.047
6	G1/4	7300 06 13	7.5	17	13	14	17	74.5	9.5	22	0.065
	G1/8	7300 08 10	4.5	17	13	14	17	65	7	25	0.048
8	G1/4	7300 08 13	7.5	17	13	14	17	74.5	9.5	27	0.066
	G3/8	7300 08 17	8.5	22	17	18.5	22	84	11.5	28.5	0.122
10	G1/4	7300 10 13	7.5	17	13	14	17	74.5	9.5	29	0.066
	G3/8	7300 10 17	8.5	22	17	18.5	22	84	11.5	30.5	0.122

DRV Pressure Reducing Valve

Brass



A	A1		HEX	L	L1	Inlet Pressure	Outlet Pressure *
G1/4	G1/4	DRV13/20	17	34	9	15 bar	2.6 bar
G1/4	G1/4	DRV13/30	17	34	9	15 bar	3.7 bar
G1/4	G1/4	DRV13/40	17	34	9	15 bar	4.5 bar
G1/4	G1/4	DRV13/50	17	34	9	15 bar	5.4 bar
G1/4	G1/4	DRV13/60	17	34	9	15 bar	6.2 bar
G1/4	G1/4	DRV13/70	17	34	9	15 bar	8 bar
G1/4	G1/4	DRV13/80	17	34	9	15 bar	8.2 bar
G1/4	G1/4	DRV13/100	17	34	9	15 bar	10.2 bar

* Tolerance outlet pressure +/- 0.5 bar

Snap Fittings



The snap fittings enable a circuit to be isolated without the need to vent the complete system.

Ø metric:
6 to 10 mm

Technical Characteristics

- **Compatible Fluids:** Compressed air
- **Working Pressure:** 0 to 10 bar
- **Working Temperature:** -20°C to +80°C
- **Flow Characteristics at 6 bar:** DN 5 mm: 1000 NI/min
DN 7 mm: 1900 NI/min

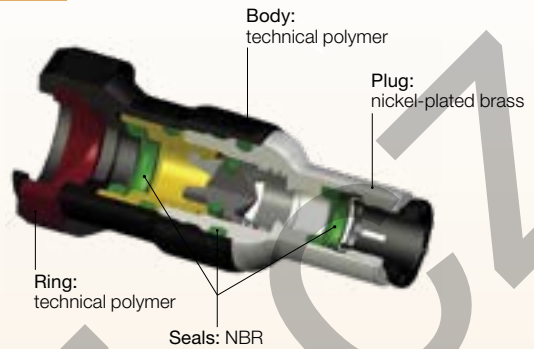
Tightening Torque (BSPT)	Thread	G1/8	G1/4	G3/8
	daN.m		0.8	1.2

Advantages

- Partial venting of systems for energy and time-saving during maintenance operations
- Protection of individuals by maintaining pressure if necessary
- Audible click indicates connection
- Circuit identification by coloured rings (on request)

Component Materials

Silicone-free

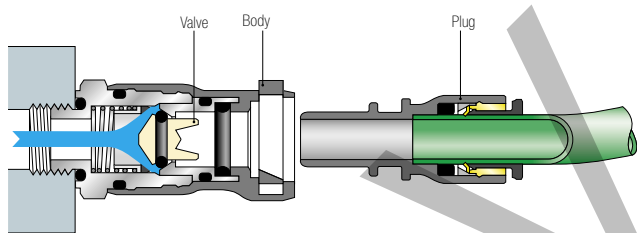


Regulations

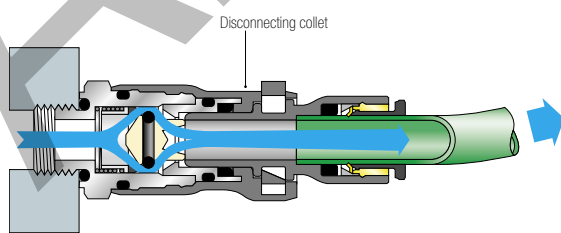
- RoHS
- REACH
- PED

Operation

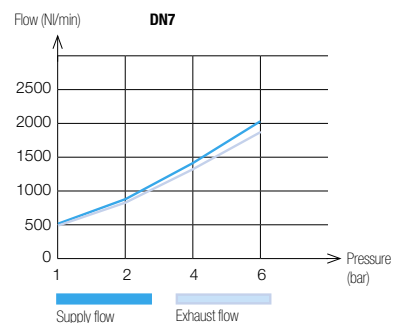
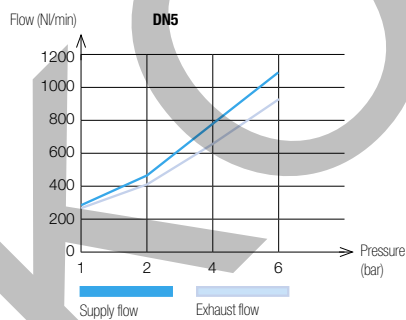
Circuit Closed



Circuit Open



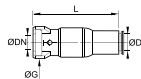
Flow Characteristics - Pressure Drop



Snap Fittings

7926 Body with Push-In Connection

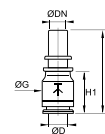
Technical polymer, Nickel-plated brass, NBR



DN	ØD		G	L	Kg
5	6	7926 05 06	18.5	44	0.020
5	8	7926 05 08	18.5	49	0.024
7.3	10	7926 07 10	22	58.5	0.044

7960 Straight Probe, Push-In Connection

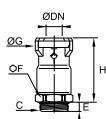
Technical polymer, NBR



DN	ØD		G	H	H1	Kg
5	6	7960 05 06	13.5	36.5	17.5	0.007
5	8	7960 05 08	13.5	37	18	0.003
7.3	10	7960 07 10	16	41	20.5	0.004

7921 Body with Male BSPP Thread

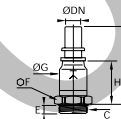
Technical polymer, Nickel-plated brass, NBR



DN	C		E	F	G	H	Kg
5	G1/8	7921 05 10	5.5	16	18.5	31.5	0.021
5	G1/4	7921 05 13	5.5	16	18.5	31.5	0.023
7.3	G1/4	7921 07 13	5.5	20	22	37.5	0.039
7.3	G3/8	7921 07 17	5.5	20	22	37.5	0.040

7961 Straight Probe, Male BSPP Thread

Technical polymer, Nickel-plated brass, NBR



DN	C		E	F	G	H	H1	Kg
5	G1/8	7961 05 10	5.5	13	13.5	46	27	0.017
5	G1/4	7961 05 13	5.5	16	13.5	46	27	0.020
7.3	G1/4	7961 07 13	5.5	16	16	51.5	31	0.025
7.3	G3/8	7961 07 17	5.5	20	16	51.5	31	0.034