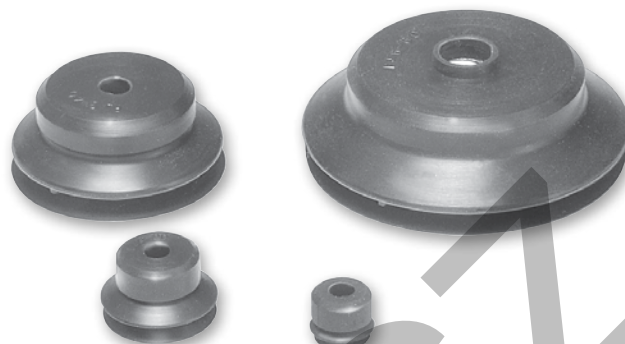


Versatile bellow cup design provides increased sealing lip and level compensation for products with irregular, smooth, curved surfaces, or flexible sheets.

The short stroke bellow suction cup has an extra thin sealing edge and shorter stroke versus the traditional bellows for faster response. The cups are good for corrugated and smooth surfaces.

Features

- Short bellows for fast response
- More lip seal contact for corrugated, textured surfaces
- Soft sealing lip
- 6mm to 80mm



Styles

- PJTM series male thread connector
- PJTF series female thread connector
- PJTK series barbed bulkhead
- PJYK series 90° barbed adapter
- PJTYS series bulkhead level compensator

Specifications

| Cup material | Nitrile | Nitrile ESD* | Silicon | Silicon ESD* |
|----------------------------|---------------|------------------|---------------|-----------------|
| Material code | NBR | NBRE | SI | SIE |
| Operating temperature (°C) | -20° to +120° | -30° to +120° | -60° to +250° | -60° to +250° |
| Color | Black | Black / Blue Dot | White | Black / Red Dot |
| Hardness, shore A (°Sh) | 55 ±5 | 70 ±5 | 55 ±5 | 55 ±5 |
| Electrical resistance (Ωm) | — | 800 to 1000 | — | 800 to 1000 |

* ESD: Electric Static Dissipative Material

How to order

Cups assemblies and replacement cups are specified by cup diameter and material. Standard nitrile and silicon are listed on the following pages. To specify an alternative material, replace the cup material with alternative cup material code.

Example: To specify a cup assembly with silicon ESD (SIE), replace (NBR) with (SIE) in the part number. PJTM-20B-NBR-G1 becomes PJTM-20B-SIE-G1. Inquire with factory for availability.

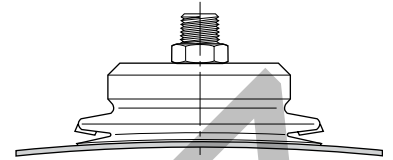
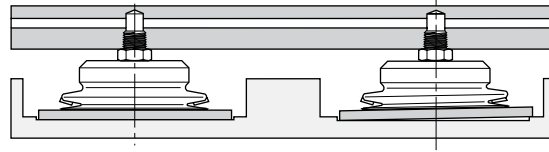
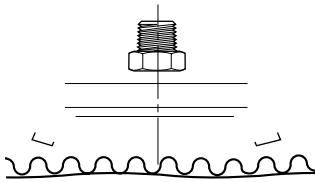
Application guide

Short Bellows

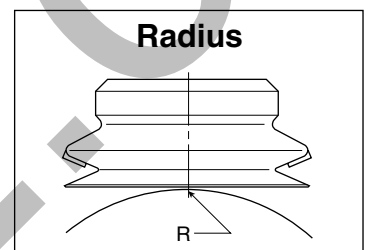
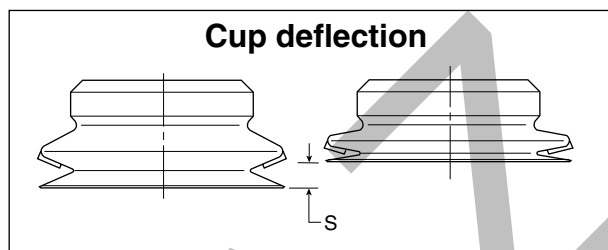
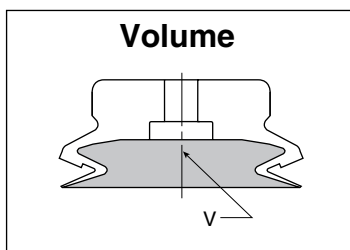
| | | | | | | | | | |
|----------------------------|---------------------------|--------------------------------------|-------------------------------------|-----------------------------|------------------------------------|-----------------------------------|----------------------|---------------------------|-----------------------|
| | | | | | | | | | |
| Flat surface, thin section | Flat surface, any section | Slightly bowed surface, thin section | Slightly bowed surface, any section | Bowed surface, thin section | Soft porous material, thin section | Soft porous material, any section | Metal sheet handling | Corrugated sheet handling | Not for vertical lift |

Applications

- High speed packaging
- Level compensation for small electronic components
- Flexible product
- Soft seal lip



Main data for short bellows PJG cups



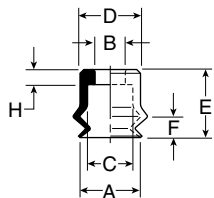
| Model number | Cup diameter mm | Area cm ² | Volume (V) liters | Lifting force @ 60% (N) | | Cup deflection (S) mm | Radius R mm |
|--------------|-----------------|----------------------|-------------------|-------------------------|---|-----------------------|-------------|
| | | | | | | | |
| PJG-6-* | 6 | .28 | 0.000016 | 1.70 | — | 4.2 | 4.0 |
| PJG-8-* | 8 | .50 | 0.00007 | 3.10 | — | 4.0 | 5.0 |
| PJG-10-* | 10 | 0.79 | 0.00017 | 4.80 | — | 3.0 | 6.0 |
| PJG-15-* | 15 | 1.77 | 0.0005 | 10.8 | — | 3.3 | 10.0 |
| PJG-20-* | 20 | 3.14 | 0.0012 | 19.2 | — | 5.5 | 13.0 |
| PJG-30-* | 30 | 7.07 | 0.003 | 43.2 | — | 7.0 | 26.0 |
| PJG-40-* | 40 | 12.6 | 0.005 | 76.9 | — | 7.2 | 37.0 |
| PJG-50-* | 50 | 19.6 | 0.008 | 120 | — | 9.0 | 41.0 |
| PJG-60-* | 60 | 28.3 | 0.020 | 173 | — | 8.0 | 70.0 |
| PJG-80-* | 80 | 50.3 | 0.040 | 308 | — | 9.5 | 100.0 |

*Cup material

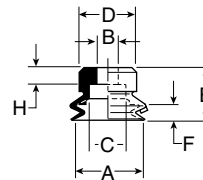
A

PJG Series Replacement Cup Dimensions

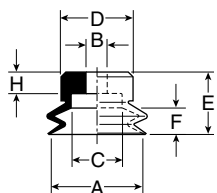
**PJG-6 and
 PJG-8**



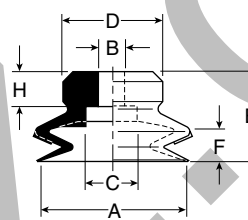
**PJG-10 and
 PJG-15**



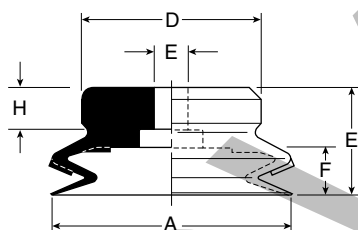
PJG-20



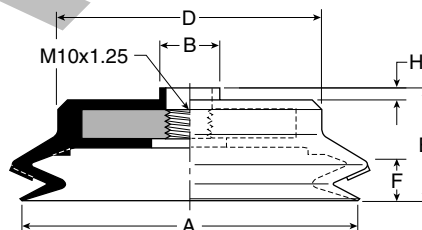
**PJG-30 thru
 PJG-40**



PJG-50



**PJG-60 thru
 PJG-80**



Dimensions (mm)

| Model number | ØA | ØB | ØC | ØD | E | F | H |
|--------------|----|------|------|-----|------|-----|-----|
| PJG-6-* | 6 | 4 | 6 | 7.5 | 9 | 4.2 | 2 |
| PJG-8-* | 8 | 4 | 6 | 8 | 9 | 4 | 2 |
| PJG-10-* | 10 | 4.6 | 7.8 | 11 | 9.5 | 3 | 3.5 |
| PJG-15-* | 15 | 4.6 | 7.8 | 12 | 11 | 3.3 | 3.5 |
| PJG-20-* | 20 | 4.6 | 10.8 | 15 | 13 | 5.5 | 4.5 |
| PJG-30-* | 30 | 5.8 | 10.8 | 20 | 18 | 7 | 7 |
| PJG-35-* | 35 | 5.8 | 10.8 | 25 | 18 | 7 | 7 |
| PJG-40-* | 40 | 5.8 | 10.8 | 30 | 18 | 7.2 | 7 |
| PJG-50-* | 50 | 7.8 | 19.8 | 40 | 20 | 9 | 7 |
| PJG-60-* | 60 | 12.5 | — | 45 | 22.5 | 8 | 2.5 |
| PJG-70-* | 70 | 12.5 | — | 55 | 23.5 | 9.5 | 2.5 |
| PJG-80-* | 80 | 12.5 | — | 68 | 23.5 | 9.5 | 2.5 |

* Cup material