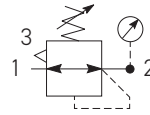


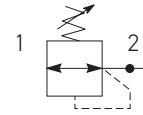
**Regulators**



**Symbols**



Self relieving regulator with gauge



Non relieving regulator

- Integral 1/4 ports
- Robust but lightweight construction
- Secondary pressure ranges 2, 4 & 8 bar
- Unbalanced poppet valve standard, with solid control piston
- Relieving & Non-relieving types
- Non-rising knob

**Options:**

<b>P 3 L</b>	<b>R A</b>	<b>1</b>	<b>2</b>	<b>B</b>	<b>N</b>		<b>P</b>	
<b>Thread type</b>		<b>Port size</b>		<b>Relief</b>				<b>Mounting</b>
BSPP		1/4		Relieving				Plastic panel mount nut
1		2		<b>B</b>				<b>P</b>
<b>Adjustment range</b>								
<b>With round gauge</b>				<b>Without gauge</b>				
2 bar				<b>Z</b>				2 bar
4 bar				<b>M</b>				4 bar
8 bar				<b>G</b>				8 bar
				<b>Y</b>				
				<b>L</b>				
				<b>N</b>				

Port size	Description	Order Code	Flow dm <sup>3</sup> /s * (scfm) *	Max bar (psi)	Height mm (Inches)	Width mm (Inches)	Depth mm (Inches)
1/4"	8 bar relieving	<b>P3LRA12BNNP</b>	12.8 (27)	10 (150)	88 (3.46)	40 (1.57)	40 (1.57)
1/4"	8 bar relieving + gauge	<b>P3LRA12BNGP</b>	12.8 (27)	10 (150)	88 (3.46)	40 (1.57)	72 (2.83)

\* flow with 10 bar (145 psi) inlet pressure, 6.3 bar (91.3 psi) set pressure and 1 bar (14.5 psi) pressure drop.

**Specifications**

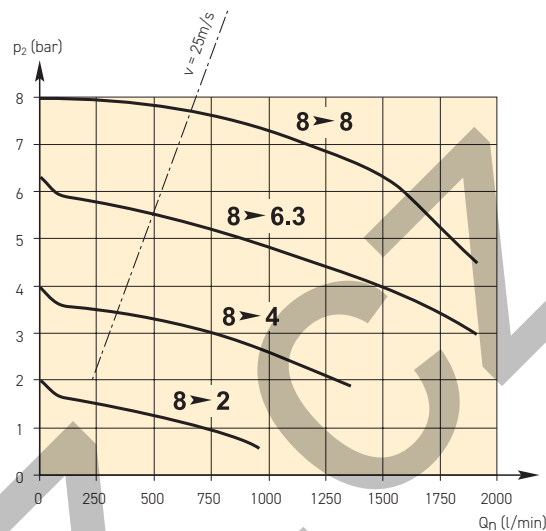
Flow Capacity*	1/4	12.8 dm <sup>3</sup> /s (27 scfm)
Operating Temperature	0°C (32°F) to 50°C (122°F)	
Max Supply Pressure	10 bar (150 psi)	
Adjusting Range Pressure	0-2 bar (30 psi) 0-4 bar (60 psi) 0-8 bar (125 psi)	
Port Size	BSPP	1/4
Gauge Port (2 ea.)	BSPP	1/8
Weight	0.11 kg (24 lbs)	
Inlet pressure 10 bar (145 psi), 6.3 bar (91.3 psi) set pressure and 1 bar (14.5 psi) pressure drop.		

**Materials of Construction**

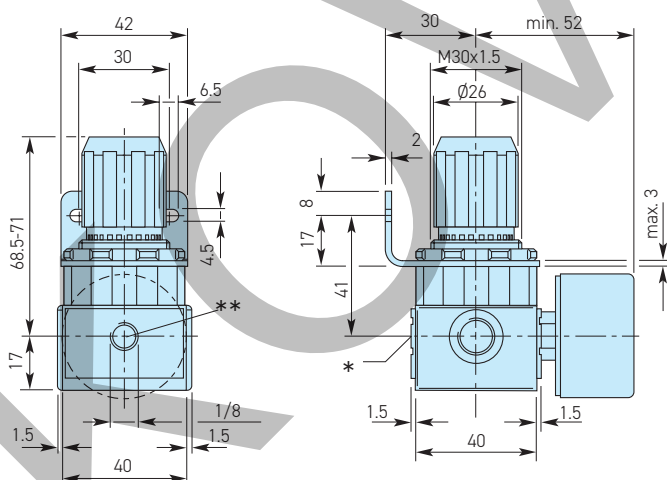
Body	High Tech Polymer
Adjustment Knob	Polyamide
Bonnet	High Tech Polymer
Piston	Brass / Nitrile
Springs	Steel
Seals	Nitrile
Panel Nut	Polyamide

**Flow Charts**

**Regulator**



**Dimensions**



\* On delivery the screw plug is not assembled  
 \*\* Two opposite gauge ports 1/8"

**Repair and Service Kits**

Panel mount nut - Aluminium	<b>P3LKA00MM</b>
Panel mount nut - Plastic	<b>P3LKA00MP</b>
Angle Bracket (uses panel mount threads)	<b>P3LKA00MR</b>

**Gauges**

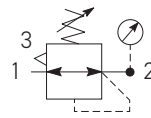
**40mm (1 1/2") Round 1/8" centre back mount**

0-30 PSI / 0-2 bar	<b>KZ8810-00</b>
0-58 PSI / 0-4 bar	<b>KZ8811-00</b>
0-160 PSI / 0-10 bar	<b>KZ8813-00</b>

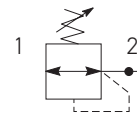
**Brass Regulators**



**Symbols**



Self relieving regulator with gauge



Non relieving regulator

- Integral 1/4 ports
- Robust brass construction
- Secondary pressure ranges 2, 4, 8 & 16 bar
- Unbalanced poppet valve standard, with solid control piston
- Relieving & Non-relieving types
- Non-rising knob
- Industrial water & Drinking water applications

**Options:**

<b>P 3 L</b>	<b>R X</b>	<b>1</b>	<b>2</b>	<b>B</b>	<b>N</b>		<b>P</b>																
<b>Thread type</b>		<b>Port size</b>		<b>Relief</b>		<b>Adjustment range</b>																	
BSPP		1/4		Relieving		<table border="1"> <tr> <th colspan="2">With round gauge</th> <th colspan="2">Without gauge</th> </tr> <tr> <td>2 bar</td> <td><b>Z</b></td> <td>2 bar</td> <td><b>Y</b></td> </tr> <tr> <td>4 bar</td> <td><b>M</b></td> <td>4 bar</td> <td><b>L</b></td> </tr> <tr> <td>8 bar</td> <td><b>G</b></td> <td>8 bar</td> <td><b>N</b></td> </tr> </table>		With round gauge		Without gauge		2 bar	<b>Z</b>	2 bar	<b>Y</b>	4 bar	<b>M</b>	4 bar	<b>L</b>	8 bar	<b>G</b>	8 bar	<b>N</b>
With round gauge		Without gauge																					
2 bar	<b>Z</b>	2 bar	<b>Y</b>																				
4 bar	<b>M</b>	4 bar	<b>L</b>																				
8 bar	<b>G</b>	8 bar	<b>N</b>																				
						<b>Mounting</b>																	
						Plastic panel mount nut																	
						<b>P</b>																	

Port size	Description	Order Code	Flow dm <sup>3</sup> /s *	(scfm) *	Max bar (psi)	Height mm (Inches)	Width mm (Inches)	Depth mm (Inches)
1/4"	8 bar relieving	<b>P3LRX12BNNP</b>	9.8	(20.7)	8 (116)	79 (3.11)	40 (1.57)	40 (1.57)
1/4"	8 bar relieving + gauge	<b>P3LRX12BNGP</b>	9.8	(20.7)	8 (116)	79 (3.11)	40 (1.57)	72 (2.83)

\* flow with 10 bar (145 psi) inlet pressure, 6.3 bar (91.3 psi) set pressure and 1 bar (14.5 psi) pressure drop.

**Specifications**

Flow Capacity*	1/4	9.8 dm <sup>3</sup> /s (20.7 scfm)
Operating Temperature	0°C (32°F) to 60°C (140°F)	
Max Supply Pressure	16 bar (232 psi)	
Adjusting Range Pressure	0-2 bar (30 psi) 0-4 bar (60 psi) 0-8 bar (125 psi)	
Port Size	BSPP	1/4
Gauge Port (2 ea.)	BSPP	1/8
Weight	0.2 kg (0.44 lbs)	

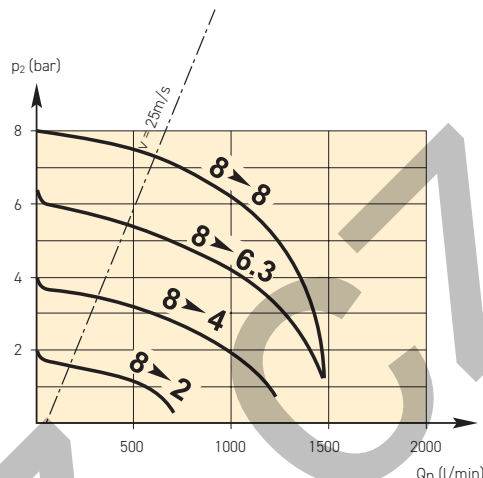
\* Inlet pressure 10 bar (145 psi), 6.3 bar (91.3 psi) set pressure and 1 bar (14.5 psi) pressure drop.

**Materials of Construction**

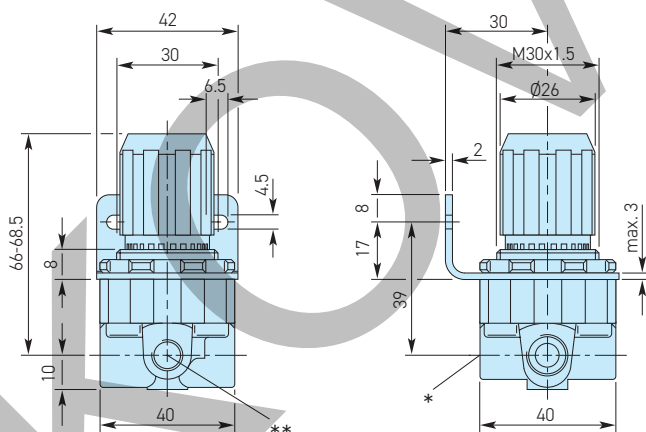
Body	Brass
Adjustment Knob	Polyamide
Bonnet	High Tech Polymer
Piston	Brass / Nitrile
Springs	Steel
Seals	Nitrile
Panel Nut	Polyamide

**Flow Charts**

**Regulator - Brass**



**Dimensions**



\* On delivery the screw plug is not assembled  
 \*\* Two opposite gauge ports 1/8

**Repair and Service Kits**

Panel mount nut - Aluminium	<b>P3LKA00MM</b>
Panel mount nut - Plastic	<b>P3LKA00MP</b>
Angle Bracket (uses panel mount threads)	<b>P3LKA00MR</b>

**Gauges**

**40mm (1 1/2") Round 1/8" centre back mount**

0-30 PSIG / 0-2 bar	<b>KZ8810-00</b>
0-58 PSIG / 0-4 bar	<b>KZ8811-00</b>
0-160 PSIG / 0-10 bar	<b>KZ8813-00</b>