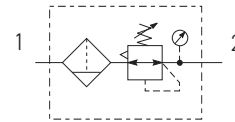


**Filter/Regulators**



**Symbols**



- Integral 1/4 ports
- High efficiency 5 micron element as standard
- Excellent water removal efficiency
- Robust but lightweight construction
- Secondary pressure ranges 2, 4 & 8 bar
- Unbalanced poppet valve standard, with solid piston control

**Options:**

<b>P 3 L</b>	<b>EA</b>	<b>1</b>	<b>2</b>	<b>P</b>	<b>B</b>	<b>N</b>	<b>P</b>
<b>Thread type</b>		<b>Port size</b>		<b>Drain type</b>		<b>Mounting</b>	
BSPP		1/4		Manual push <b>P</b> Semi-auto <b>S</b>		Plastic panel mount nut <b>P</b>	
<b>Element</b>		<b>Relief</b>		<b>Adjustment range</b>			
5µ Element <b>E</b> 30µ Element <b>G</b>		Relieving <b>B</b>		<b>With round gauge</b>		<b>Without gauge</b>	
<b>Bowl type</b>				2 bar <b>Z</b>		2 bar <b>Y</b>	
Poly bowl <b>P</b>				4 bar <b>M</b>		4 bar <b>L</b>	
				8 bar <b>G</b>		8 bar <b>N</b>	

Port size	Description	Order Code	Flow dm <sup>3</sup> /s (scfm) *	Max bar (psi)	Height mm (Inches)	Width mm (Inches)	Depth mm (Inches)
1/4"	8 bar Relieving - Poly bowl - Manual drain 5µ	<b>P3LEA12EPPBNNP</b>	12.9 (27.3)	10 (150)	175 (6.89)	40 (1.57)	40 (1.57)
1/4"	8 bar Relieving - Poly bowl - Semi-auto drain 5µ	<b>P3LEA12EPSBNNP</b>	12.9 (27.3)	10 (150)	175 (6.89)	40 (1.57)	40 (1.57)
1/4"	8 bar Relieving - Poly bowl - Manual drain 5µ + Gauge	<b>P3LEA12EPPBNGP</b>	12.9 (27.3)	10 (150)	175 (6.89)	40 (1.57)	72 (2.83)
1/4"	8 bar Relieving - Poly bowl - Semi-auto drain 5µ + Gauge	<b>P3LEA12EPSBNGP</b>	12.9 (27.3)	10 (150)	175 (6.89)	40 (1.57)	72 (2.83)

\* flow with 10 bar (145 psi) inlet pressure, 6.3 bar (91.3 psi) set pressure and 1 bar (14.5 psi) pressure drop.

**Specifications**

Flow Capacity*	1/4	12.9 dm <sup>3</sup> /s (27.3 scfm)
Operating Temperature		0°C (32°F) to 50°C (122°F)
Max Supply Pressure		10 bar (150 psi)
Standard Filtration		5 Micron
Useful Retention		12 cm <sup>3</sup> (0.4 US oz.)
Adjusting Range Pressure		0-2 bar (30 psi) 0-4 bar (60 psi) 0-8 bar (125 psi)
Port Size	BSPP	1/4
Gauge Port (2 ea.)	BSPP	1/8
Weight		0.12 kg (26 lbs)

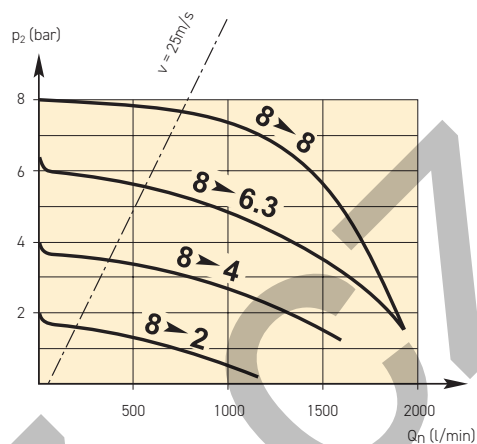
\* Inlet pressure 10 bar (145 psi), 6.3 bar (91.3 psi) set pressure and 1 bar (14.5 psi) pressure drop.

**Materials of Construction**

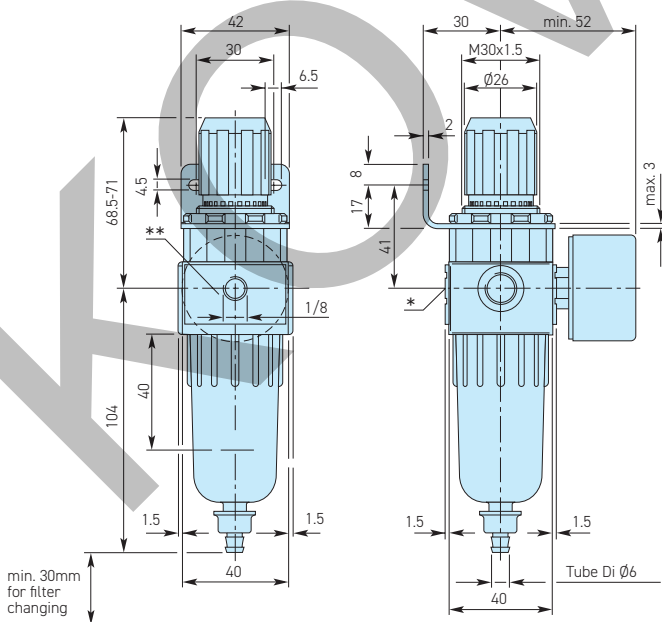
Body	High Tech Polymer
Adjustment Knob	Polyamide
Bonnet	Polyamide
Bowl	Polycarbonate
Filter element	Polyethylene
Seals	Nitrile
Springs	Steel
Piston	Brass / Nitrile
Panel Nut	Polyamide

**Flow Charts**

**Filter / Regulator**



**Dimensions**



\* On delivery the scrow plug is not assembled  
\*\* Two opposite gauge ports 1/8

**Repair and Service Kits**

Plastic bowl / semi-auto drain	<b>P3LKA00BPS</b>
5µ particle filter element	<b>P3LKA00ESE</b>
30µ particle filter element	<b>P3LKA00ESG</b>
Panel mount nut - Aluminium	<b>P3LKA00MM</b>
Panel mount nut - Plastic	<b>P3LKA00MP</b>
Angle Bracket (uses panel mount threads)	<b>P3LKA00MR</b>

**Gauges**

**40mm (1 1/2") Round 1/8" centre back mount**

0-30 PSI / 0-2 bar	<b>KZ8810-00</b>
0-58 PSI / 0-4 bar	<b>KZ8811-00</b>
0-160 PSI / 0-10 bar	<b>KZ8813-00</b>