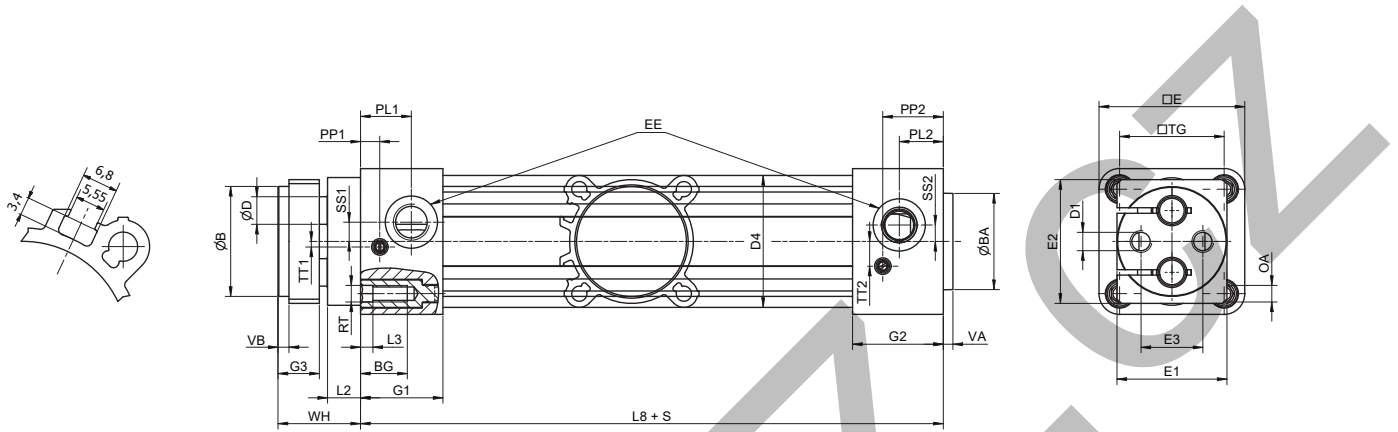


Dimensions

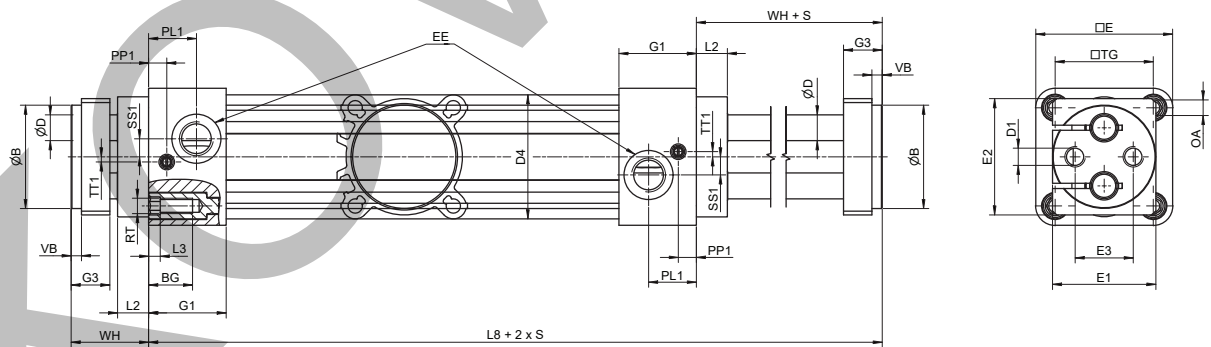
Twin-Rods smooth profile design

P1F-R



Through Twin-Rods smooth profile design

P1F-Q



Dimensions

Dimensions [mm]

Cyl.-bore [mm]	E3	ØB h9	ØBA* -0,1	BG	ØD	D1	D4	E1	E2	EE*	G1	G2	G3	VA*	VB
Ø32	19	32	30	16	8	M6	32	32	40	G1/8	26	28.4	15	3.6	4
Ø40	22.5	40	35	16	10	M8	40	40	45	G1/4	30	33	15	3.5	4
Ø50	30	50	40	16	12	M8	50	50	55	G1/4	34	33.4	18	3.6	4
Ø63	38	63	45	16	16	M10	63	63	70	G3/8	34	39.4	22	3.5	4
Ø80	50	80	45	16	20	M12	80	80	95	G3/8	39	39.4	22	3.5	4
Ø100	70	100	55	16	20	M12	100	100	115	G1/2	40	44.3	22	3.5	4

*Dimensions in accordance with ISO

Cyl.-bore [mm]	L3	L8	OA	PL1	PP1	PL2	PP2	RT	SS1	TT1	SS2	TT2	TG*	E*	L2	WH
Ø32	4.5	102	6	17	8	14	20	M6	6	2	5	6.5	32.5	47	8	26
Ø40	4.5	112	6	18.5	7	16	22	M6	7	2	6	9	38	53	12	30
Ø50	4.5	117	8	22.5	27	15.5	21.5	M8	9.5	4	6	9	46.5	65	13	34
Ø63	4.5	125	8	17.5	28	18	28	M8	10	6	10	11	56.5	75	11	36
Ø80	5.5	136	10	20.5	30	20	30	M10	9	14	11.5	11	72	95	13	38
Ø100	5.5	143	10	19	33	18	33	M10	13	14	11.5	14	89	115	13	38

*Dimensions in accordance with ISO

Tolerances [mm]

Cyl.-bore [mm]	WH	L8	TG	stroke tolerance		
				s ≤ 350 mm	350 mm < s ≤ 600 mm	s > 600 mm
Ø32	0 / - 0.5	± 0.3	± 0.4	+ 1.7	+ 1.9	+ 2.3
Ø40	0 / - 0.5	± 0.3	± 0.4	+ 1.7	+ 1.9	+ 2.3
Ø50	0 / - 0.5	± 0.4	± 0.4	+ 1.8	+ 2	+ 2.4
Ø63	0 / - 0.5	- 0.5 / + 0.3	± 0.4	+ 1.9	+ 2.1	+ 2.5
Ø80	0 / - 0.5	± 0.4	± 0.4	+ 1.9	+ 2.1	+ 2.5
Ø100	0 / - 0.5	± 0.5	± 0.4	+ 2.0	+ 2.2	+ 2.6

PDE3570TCEN
Pneumatic Cylinders

Order code

Order Instructions P 1 F - R 0 3 2 M S X 0 1 6 0 - 0 0 0 0

Profile/cylinder design	
R	Smooth Twin-Rods
Q	Smooth Through Twin-Rods

Cylinder bore size	
032	32 mm
040	40 mm
050	50 mm
063	63 mm
080	80 mm
100	100 mm

Temperature range	
M	Standard Temperature -20° to +80°C
F	High Temperature -10°C to +150°C (Available only for 40mm bore)

Rod extension or trunnion mounting	
0000	without
P . . .	Piston rod extension in mm
G000	Trunnion mount +90° vs. air ports
7000	Trunnion mount +0° vs. air ports
H . . .	piston rod extension in mm with trunnion +90°
8 . . .	piston rod extension in mm with trunnion +0°

Cylinder stroke	
....	Stroke length in mm

Piston style	
X *	Aluminium with magnet
A	Aluminium w/o magnet

*not for high temperature range

Piston Rod material	
S	Stainless steel

KONVAV