

ZB2-●●●● & PXB-B19●● & PXB-B29●●

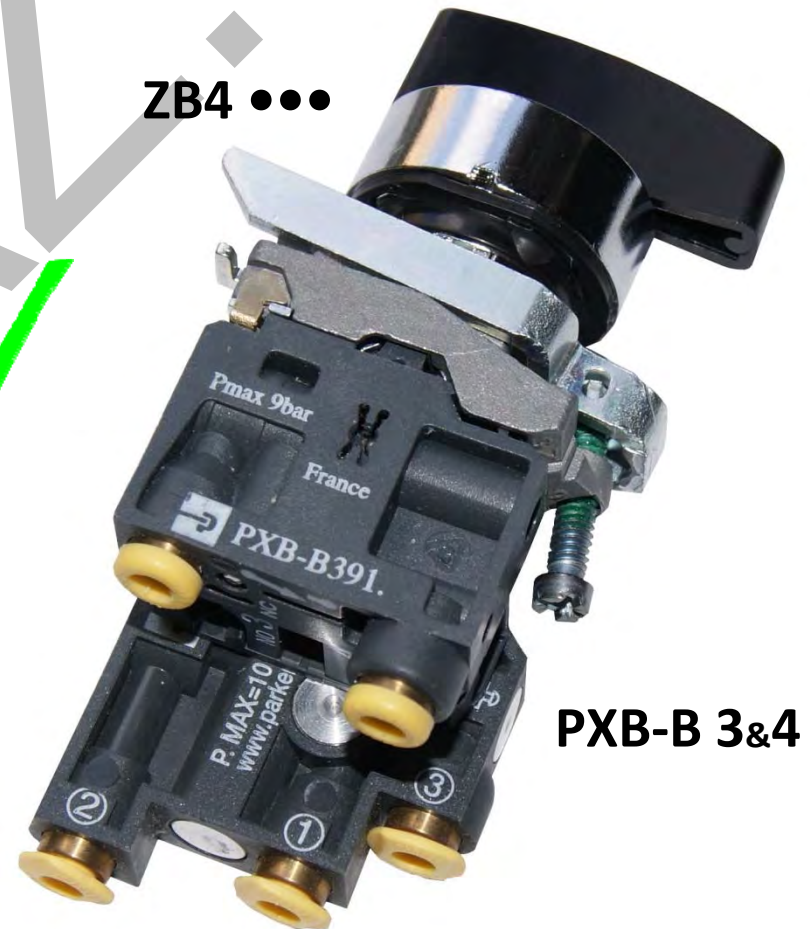


DISCONTINUED



ZB2 ●●●

PXB-B 1&2



ZB4 ●●●

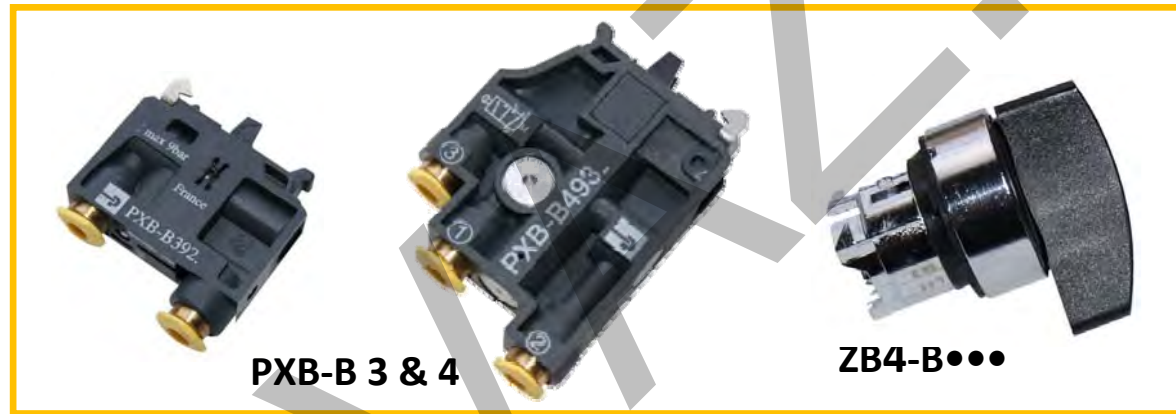
PXB-B 3&4

ZB2-xxxxx & PXB-B191 • & PXB-B291 • DISCONTINUED



- The new VALVE version is not compatible with the old mounting block ZB2-BZ009 → it is necessary to replace it by ZB4-BZ009
- The new operating HEAD version is not compatible with the old mounting block ZB2-BZ009 → it is necessary to replace it by ZB4-BZ009

To replace old ZB2 operating HEAD or old valve PXB-1 or 2 fitted on the old ZB2-BZ009 mounting block it is necessary to replace the 3 parts : **operating HEAD + mounting BLOCK + VALVE** by the new version



PXB-B 3 & 4

ZB4-B...

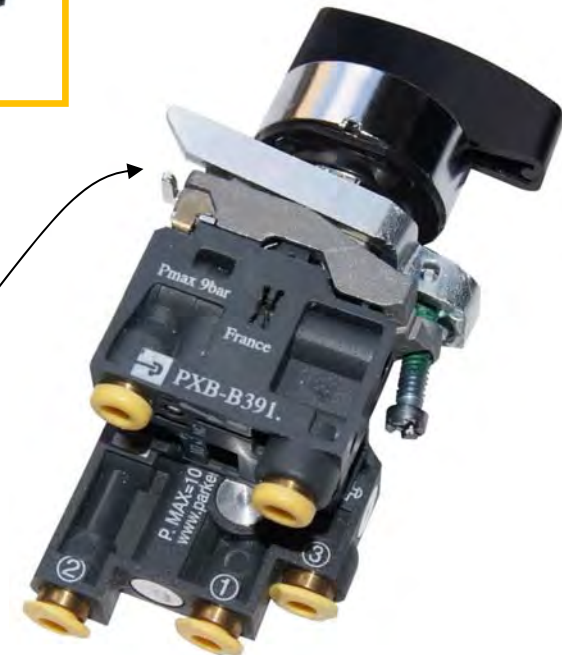
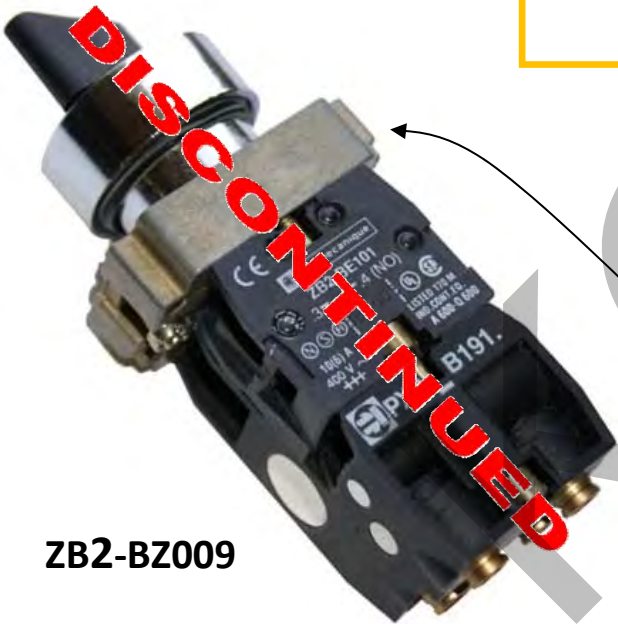


ZB2-BZ009



ZB4-BZ009

ZB2-BZ009



Ø 4 mm instant straight connections



PXB-B19●●	Old version	New version
Normally non passing (NNP)	PXB-B1911	PXB-B3911
Normally passing (NP)	PXB-B1921	PXB-B3921



PXB-B29●●	Old version	New version
Normally non passing (NNP)	PXB-B2911	PXB-B4931 *
Normally passing (NP)	PXB-B2921	PXB-B4931 *


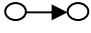


* the PXB-B4931 is composed by (x1) NNP & (x1) NP


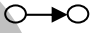
→ the alternative for PXB-B2911 or PXB-B2921 is the same part number : PXB-B4931

M5 thread connections



PXB-B19●●	Old version	New version
Normally non passing (NNP) 	PXB-B1915	PXB-B3915
Normally passing (NP) 	PXB-B1925	PXB-B3925



PXB-B29●●	Old version	New version
Normally non passing (NNP) 	PXB-B2911	PXB-B4935 *
Normally passing (NP) 	PXB-B2921	PXB-B4935 *



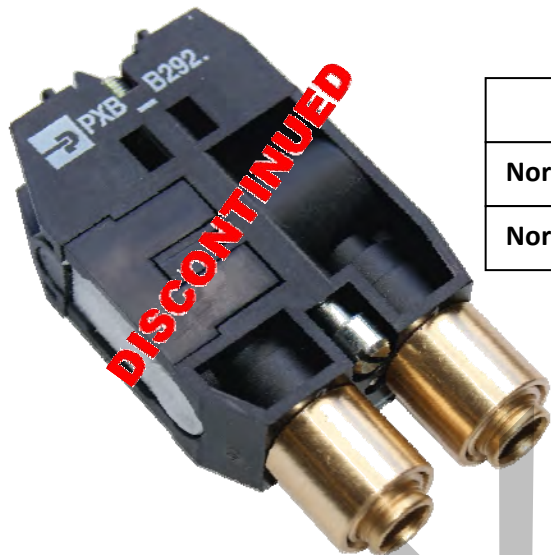
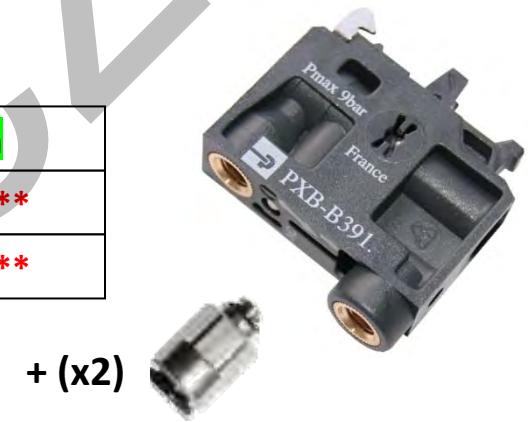
* the PXB-B4935 is composed by (x1) NNP & (x1) NP

→ the alternative for PXB-B2911 or PXB-B2921 is the same part number : PXB-B4935

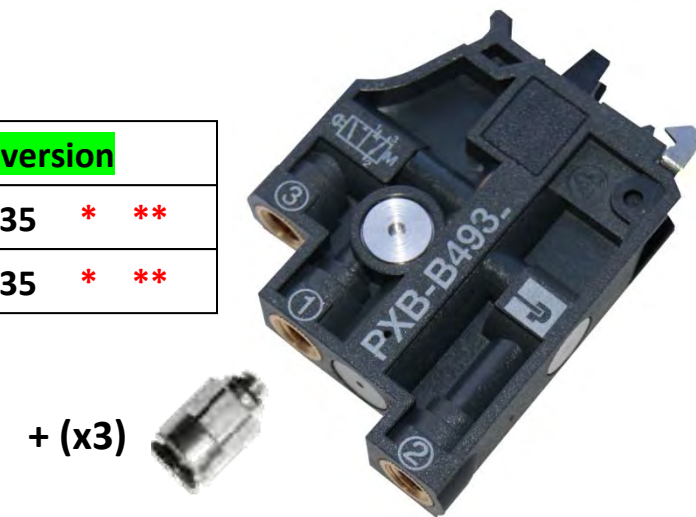
Ø 6 mm instant straight connections



PXB-B19●●	Old version	New version
Normally non passing (NNP)	PXB-B1916	PXB-B3915 **
Normally passing (NP)	PXB-B1926	PXB-B3925 **



PXB-B29●●	Old version	New version
Normally non passing (NNP)	PXB-B2911	PXB-B4935 * **
Normally passing (NP)	PXB-B2921	PXB-B4935 * **




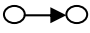
* the PXB-B4935 is composed by (x1) NNP & (x1) NP

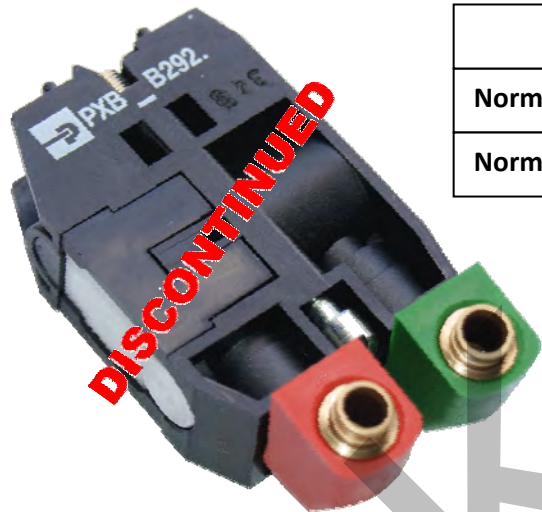
→ the alternative for PXB-B2911 or PXB-B2921 is the same part number : PXB-B4935



** as there is not a Ø 6 mm instant straight connections in the new version, the suggested alternative is with M5 thread connections + (x2 or x3) male connector M5/ Ø 6 mm instant straight connections

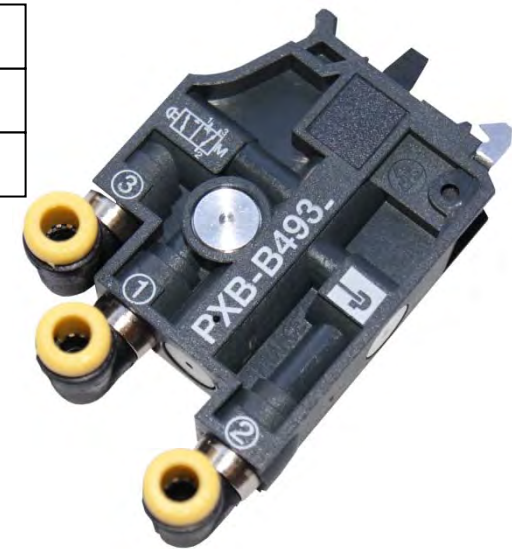
Ø 4 mm instant swivel connections



PXB-B19●●	Old version	New version
Normally non passing (NNP) 	PXB-B1912	PXB-B3912
Normally passing (NP) 	PXB-B1922	PXB-B3922



PXB-B29●●	Old version	New version
Normally non passing (NNP) 	PXB-B2912	PXB-B4932 *
Normally passing (NP) 	PXB-B2922	PXB-B4932 *





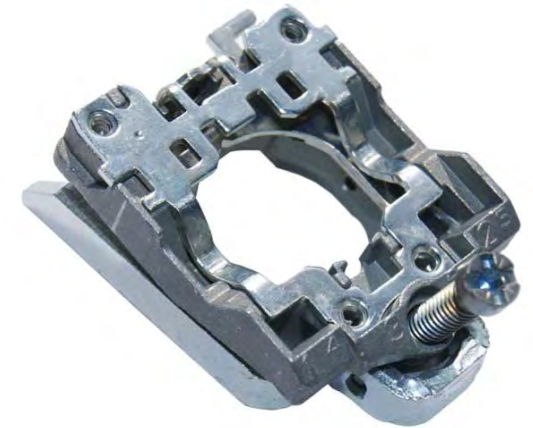
* the PXB-B4932 is composed by (x1) NNP & (x1) NP

→ the alternative for PXB-B2911 or PXB-B2921 is the same part number : PXB-B4932

Electrical switch & Mounting block







		Old version	New version
Normally Open (NO)		ZB2-BE101	ZBE-101
Normally Closed (NC)		ZB2-BE102	ZBE-102



Old version	New version
ZB2-BZ009	ZB4-BZ009

Pushbuttons heads



Pushbuttons	Description	Function	colour	Reference
	flush push	Push / Spring	Black	ZB4-BA2
			Green	ZB4-BA3
			Red	ZB4-BA4
			Yellow	ZB4-BA5
			blue	ZB4-BA6
			6 colours	ZB4-BA9
	projecting push	Push / Push	Black	ZB4-BH02
			Green	ZB4-BH03
			Red	ZB4-BH04
	Projecting booted (clear silicone)	Push / Spring	Black	ZB4-BL2
			Green	ZB4-BL3
			Red	ZB4-BL4
			Yellow	ZB4-BL5
			blue	ZB4-BL6
	Projecting booted (clear silicone)	Push / Spring	Black	ZB4-BP2
			Green	ZB4-BP3
			Red	ZB4-BP4
			Yellow	ZB4-BP5
			blue	ZB4-BP6

Selectors heads switches



Selectors switches

Description

Function

Reference



standard handle

2 positions stay put



ZB4-BD2

3 positions stay put



ZB4-BD3

3 positions spring return center



ZB4-BD5



long handle

2 positions stay put



ZB4-BJ2

3 positions stay put



ZB4-BJ3

3 positions spring return center



ZB4-BJ5

3 positions spring return left to center



ZB4-BJ7

Key heads switches



Key switches

Description

Function

Reference

with key

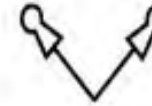
2 positions stay put



ZB4-BG2

with key

2 positions stay put



ZB4-BG4

with key

2 positions spring return from right to left



ZB4-BG6

with key

3 positions stay put



ZB4-BG3

with key

3 positions spring return center



ZB4-BG7



Mushroom head pushbuttons



Mushroom head pushbuttons



40 mm diameter

60 mm diameter

Description	Function	Colour	Reference
40 mm diameter	Push / Spring	Black	ZB4-BC2
	Push / Spring	Green	ZB4-BC3
	Push / Spring	Red	ZB4-BC4
	Push / Spring	Yellow	ZB4-BC5
	Push / Spring	blue	ZB4-BC6
60 mm diameter	Push / Spring	Black	ZB4-BR2
	Push / Spring	Red	ZB4-BR4

Emergency head pushbuttons



Emergency pushbuttons



Description	Function	Colour	Reference
40 mm diameter	Push / Pull	Red	ZB4-BT4
60 mm diameter	Push / Pull	Red	ZB4-BX4
40 mm diameter	Turn to release	Red	ZB4-BS54
60 mm diameter	Turn to release	Red	ZB4-BS64
40 mm diameter	Key release	Red	ZB4-BS14
60 mm diameter	Key release	Red	ZB4-BS24

ZB4 ••• Robustness & Safety



Single fixing screw



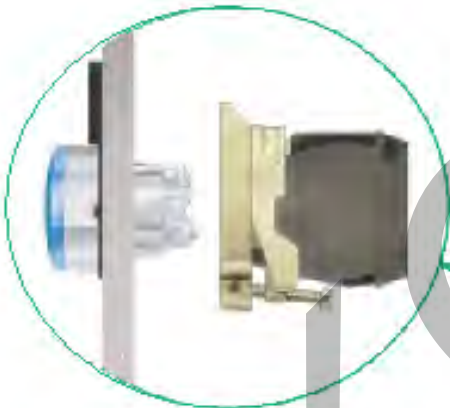
- Self-locking, vibration resistant and 3 point fixing
- Automatic earthing

functions



Simple clip-on mounting for contact blocks
Fast reliable, no tools required

Head to body assembly

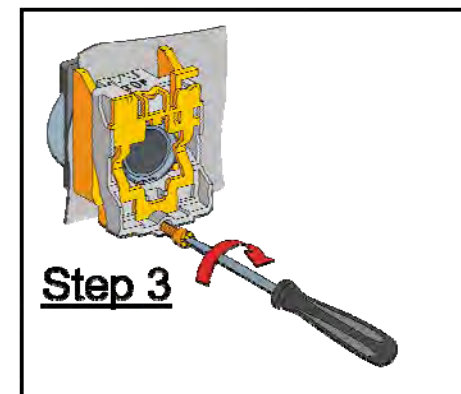
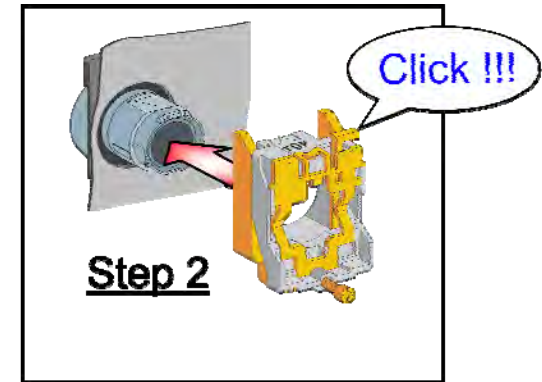
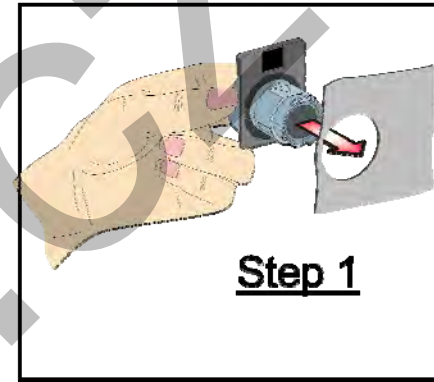
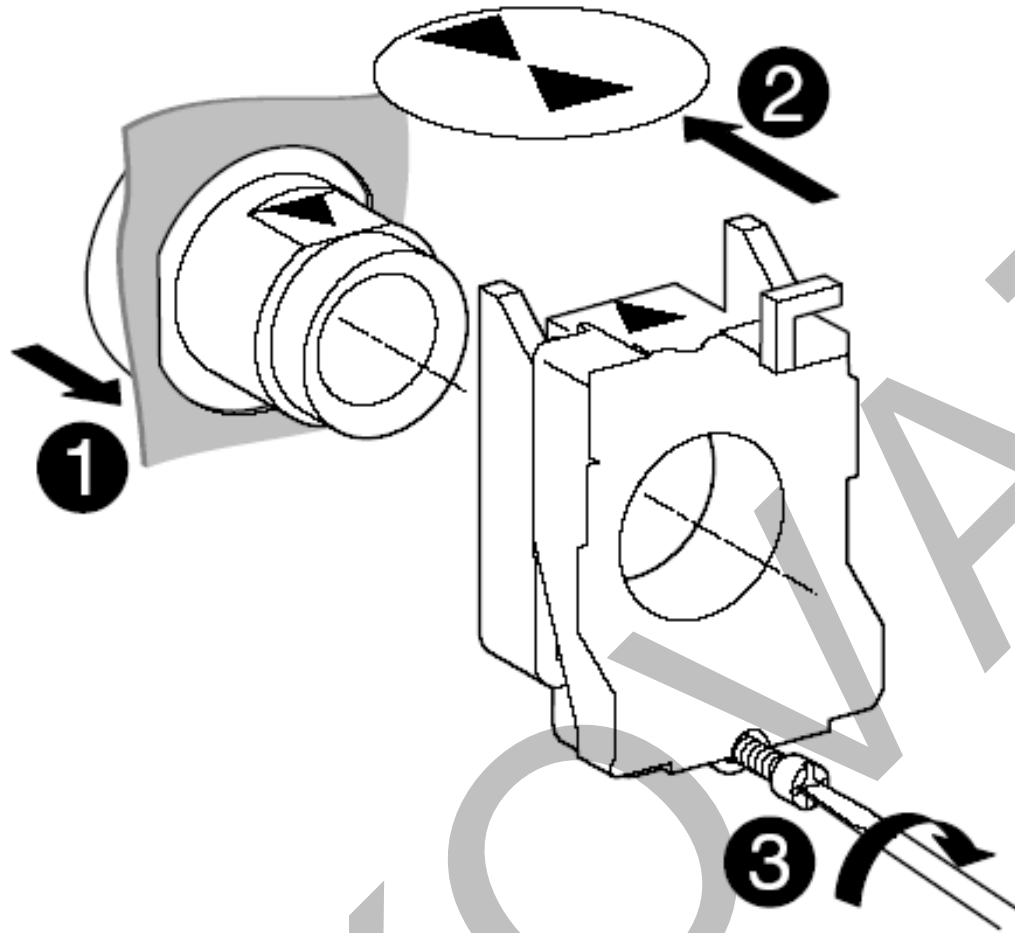


- Head automatically retains its position within cut-out
- Body/fixing collar clips onto head



Metal latch

ZB4 ••• Assembled in "One Click"!



0,8 Nm/7.5 lb-in (maxi 1,2 Nm/10.6 lb-in)

