

PF Series

Non-Spill Chemical Transfer Couplings



Ideal for Closed System Transfer:

Parker PF Series dry disconnect couplings virtually eliminate fluid loss upon disconnection and are designed to help meet the demand for closed system transfer and dispensing of chemicals and fluids with minimal environmental contamination.

These couplers can be used with concentrated or diluted industrial chemicals, fertilizers, herbicides, insecticides, fungicides or pesticides when transferring from bulk storage tanks, returnable containers, applicators, etc.

Applications include:

- Chemical Dispensing Systems
- Spray Application Equipment
- Intermediate Bulk Containers (IBC)
- Water Systems
- Hydrofluoric Acid & Hydrochloric Acid (with Hastelloy-C Spring option)



Contact Information:

Parker Hannifin Corporation
Quick Coupling Division
8145 Lewis Road
Minneapolis, MN 55427

phone 763 544 7781
fax 763 544 3418
qcd_sales@parker.com

solutions.parker.com/nonspill

PF Series Features:

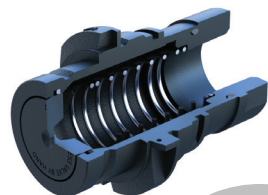
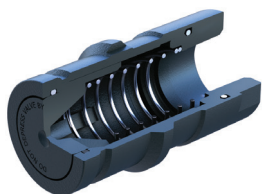
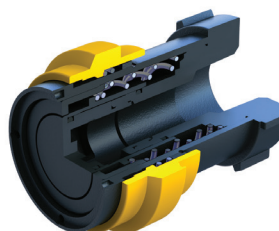
- Available in 1/2", 1" and 2" body sizes
- Push-to-connect design
- Flush-face valves provide minimal spillage
- 1" female coupler has non-wetted springs
- 316 stainless steel springs
- Hastelloy-C springs available
- Fluorocarbon seals
- Alternative seal materials available



ENGINEERING YOUR SUCCESS.

Specifications

Body Size	1/2 inch	1 inch	2 inch
Body	Polypropylene	Polypropylene	Polypropylene
Springs	316 Stainless Steel	316 Stainless Steel	316 Stainless Steel
Seals	Fluorocarbon	Fluorocarbon	Fluorocarbon
Rated Pressure @ 68°F	100 psi	60 psi	100 psi
Rated Flow	12 gpm	20 gpm	50 gpm
Pressure Drop at Rated Flow	11.3 psi	3.4 psi	4.0 psi
Force to Connect	32 lbs	41 lbs	54 lbs
Force to Disconnect	12 lbs	17 lbs	17 lbs
Operating Temperature	+40°F to +140°F	+40°F to +140°F	+40°F to +140°F
Storage Temperature	-20°F to +140°F	-20°F to +140°F	-20°F to +140°F
Maximum Spillage per Disconnect	0.01 cu in (0.14 ml)	0.06 cu in (1.0 ml)	0.5 cu in (9.0 ml)
Vacuum Rating	27.4 Hg	Contact QCD	Contact QCD



Couplers

Body Size	Part Number	Port Thread*
1/2 inch	PF-501-8FP	1/2" NPT
1 inch	PF-1001-16FP	1" NPT
2 inch	PF-2001-32FP	2" NPT

Nipples

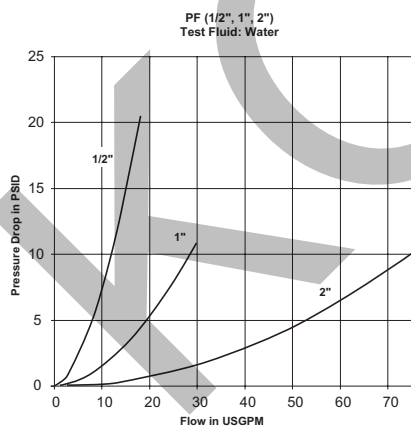
Body Size	Part Number	Port Thread*
1/2 inch	PF-502-8FP	1/2" NPT
1 inch	PF-1002-16FP	1" NPT
2 inch	PF-2002-32FP	2" NPT

Nipples – Tank Mount

Body Size	Part Number	Port Thread*	Tank Mount Thread
1 inch	PF-1002-32MB	1" NPT	Modified Buttress
1 inch	PF-1002-32MP	1" NPT	Modified NPS

*Port thread is female NPT. Contact QCD for other options

Performance



Dust Protection

Body Size	Coupler Dust Cap Part Number	Nipple Dust Cap Part Number	Material
1/2 inch	FR-501	FR-502	Synthetic Rubber
1 inch	None	PFR-1002	Ethylene Propylene
1 inch	None	PFR-1002-NS*	Ethylene Propylene

*For use with tank mount nipples

