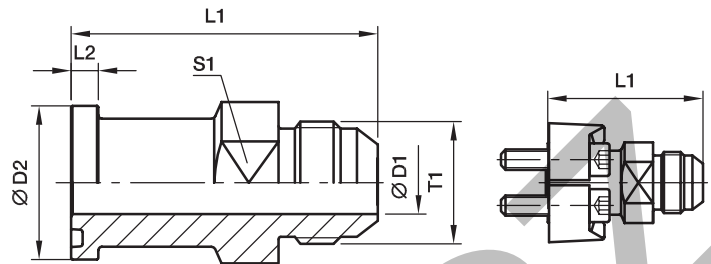


## XHQ SAE Straight flange adapter

SAE Flange / Triple-Lok® 37° flare end  
(ISO 6162-1/-2)



### 3000 PSI Series

Nom. flange size		Tube		T1	D1	D2	L1	L2	S1	Weight (steel) kg/piece	Order code*	PN (bar) <sup>1)</sup>
SAE (in.)	ISO (DN)	(metr.)	(in.)									
3/4	19	18, 20	3/4	<b>1 1/16-12UN</b>	15.5	38.1	70.4	6.7	35.0	0.21	<b>12XHQ1</b>	350
1	25	22, 25	7/8, 1	<b>1 5/16-12UN</b>	21.5	44.5	73.9	8.0	41.0	0.30	<b>16XHQ1</b>	350
1 1/4	32	28, 30, 32	1 1/4	<b>1 5/8-12UN</b>	27.5	50.8	85.3	8.0	47.5	0.31	<b>20XHQ1</b>	275
1 1/2	38	35, 38	1 1/2	<b>1 7/8-12UN</b>	33.5	60.3	90.7	8.0	54.0	0.56	<b>24XHQ1</b>	210
2	51	50	2	<b>2 1/2-12UN</b>	45.0	71.4	102.6	9.5	66.5	1.10	<b>32XHQ1</b>	138

### 6000 PSI Series

3/4	19	18, 20	3/4	<b>1 1/16-12UN</b>	15.5	41.3	78.2	8.8	35.0	0.21	<b>12XHQ2</b>	350
1	25	22, 25	7/8, 1	<b>1 5/16-12UN</b>	21.5	47.6	87.1	9.5	41.0	0.30	<b>16XHQ2</b>	350
1 1/4	32	28, 30, 32	1 1/4	<b>1 5/8-12UN</b>	27.5	54.0	91.4	10.3	47.5	0.31	<b>20XHQ2</b>	275
1 1/2	38	35, 38	1 1/2	<b>1 7/8-12UN</b>	33.5	63.5	110.2	12.6	54.0	0.56	<b>24XHQ2</b>	210

<sup>1)</sup> Pressure shown = Item deliverable

$$\frac{\text{PN (bar)}}{10} = \text{PN (MPa)}$$

Stainless steel on request.

See pages M16 and M19 for related flange halves depending on bolt sets.

See page M10 for related flange port O-rings.

**Stainless steel parts may have dimensional deviations. Additional information on request.**

#### Order code suffixes

Material	Suffix surface and material	Example only flange adapter
Steel, oiled	S	12XHQ1-S