

**Characteristics**

Pilot operated pressure relief valves are available with both Parker (series R/RS) and Denison (series R4V/R6V) model codes.

A manually adjusted pilot stage controls a seated type main stage.

A vent function with a solenoid operated directional valve is available for circulation at minimum pressure.

**Features**

- Pilot operated with manual adjustment
- 2 interfaces
  - Subplate ISO 6264 (DIN 24340 Form D) with VV01 vent valve
  - Subplate ISO 6264 (DIN 24340 Form E) with Cetop 03 vent valve
- 4 pressure stages
- 3 adjustment modes
  - hand knob
  - acorn nut with lead seal
  - Key lock
- Remote control via port X

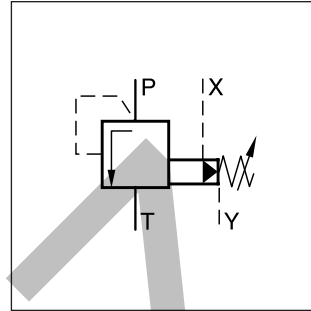
**Pilot Operated Pressure Relief Valves  
Series R / RS (Parker), R\*V (Denison)**



R25R



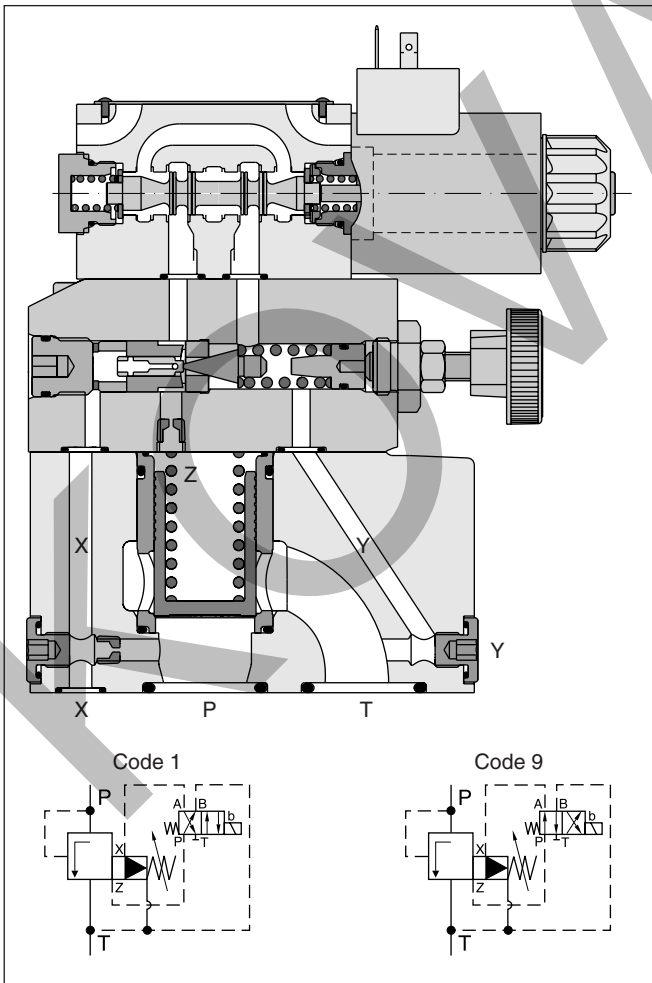
RS25R



RS25M

4

**RS25R**



**Function:**

**Series R**

System pressure in port P is applied via the X gallery to the spring loaded cone in the pilot head. The pilot head controls the pressure in the Z area on top of the main cartridge which is additionally kept close by the main spring.

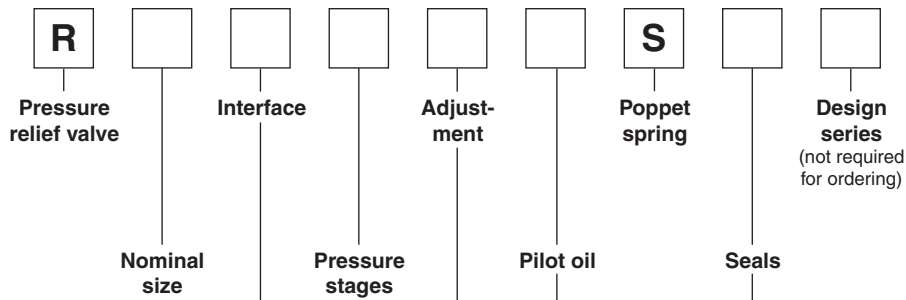
If the pilot pressure exceeds the setting pressure the pilot cone opens and thus limits the pilot pressure.

When the system pressure exceeds the pilot pressure plus the spring force, the main cartridge opens to port T and limits the pressure in port P to the adjusted level.

**Series RS**

Additionally to the relief function of series R, a solenoid operated vent valve connects the Z area to tank. This allows oil circulation from P to T at minimum pressure drop. The vent valve can either be a standard Cetop 03 valves (mounting form E) or a sandwich unit (mounting form D). For both types the vent position can be either at the energized or de-energized solenoid.

**4**



Code	Nominal size
10	NG10
25	NG25
32	NG32

Code	Seals
N	NBR
V	FPM

Code	Interface
M	NG 10 and 25  NG 32 
R <sup>1)</sup>	NG 10; 25; 32 

<sup>1)</sup> drain line with pipe only

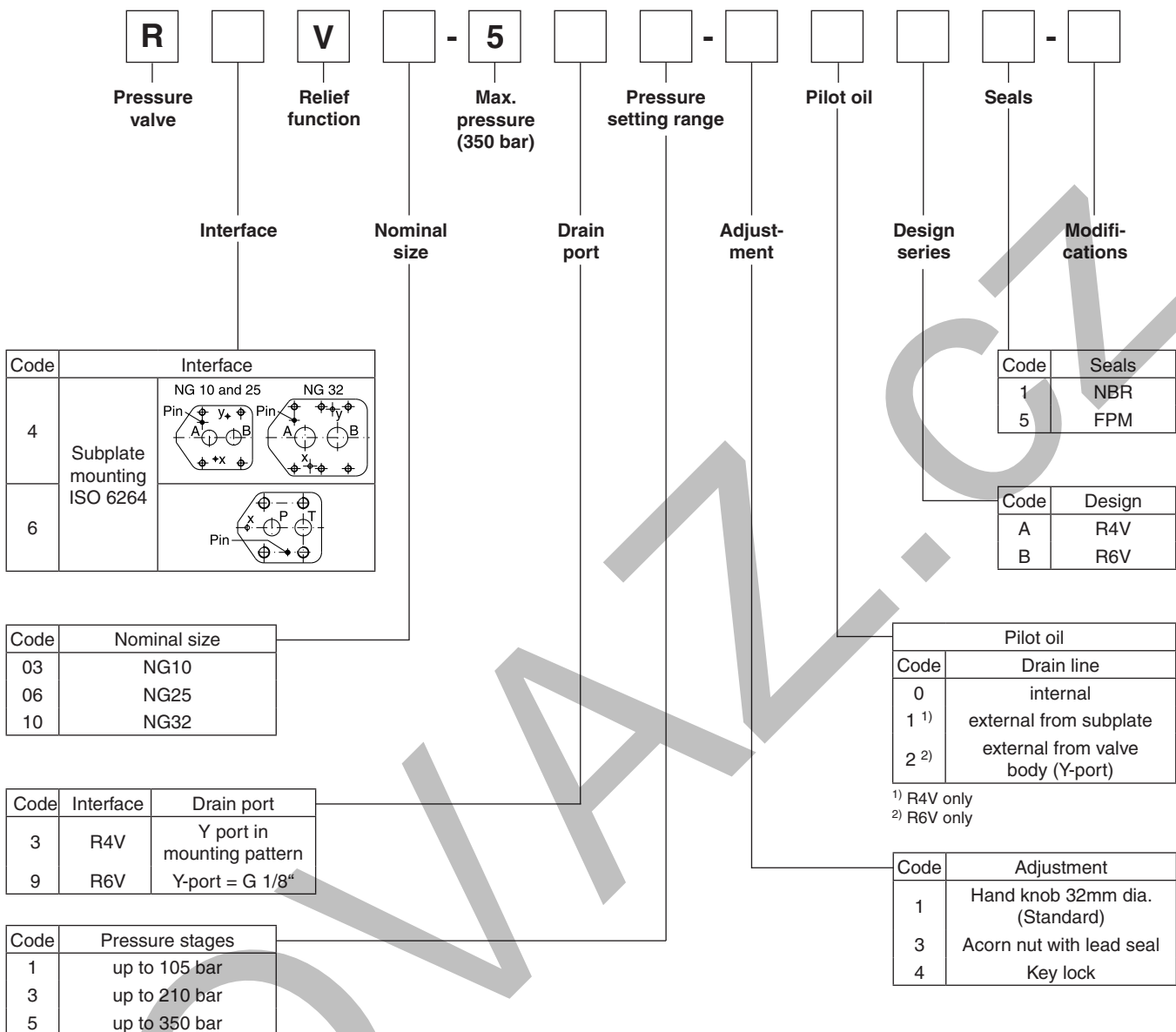
Pilot oil		
Code	Pilot	Drain
1	Internal	External
4	Internal	Internal

Code	Adjustment
S	Hand knob (Standard)
L	Key lock
A	Acorn nut with lead seal

Code	Pressure stages
07	up to 70 bar
17	up to 175 bar
25	up to 250 bar
35	up to 350 bar



The Parker model code should be used for all new applications. Otherwise also refer to Denison model code.

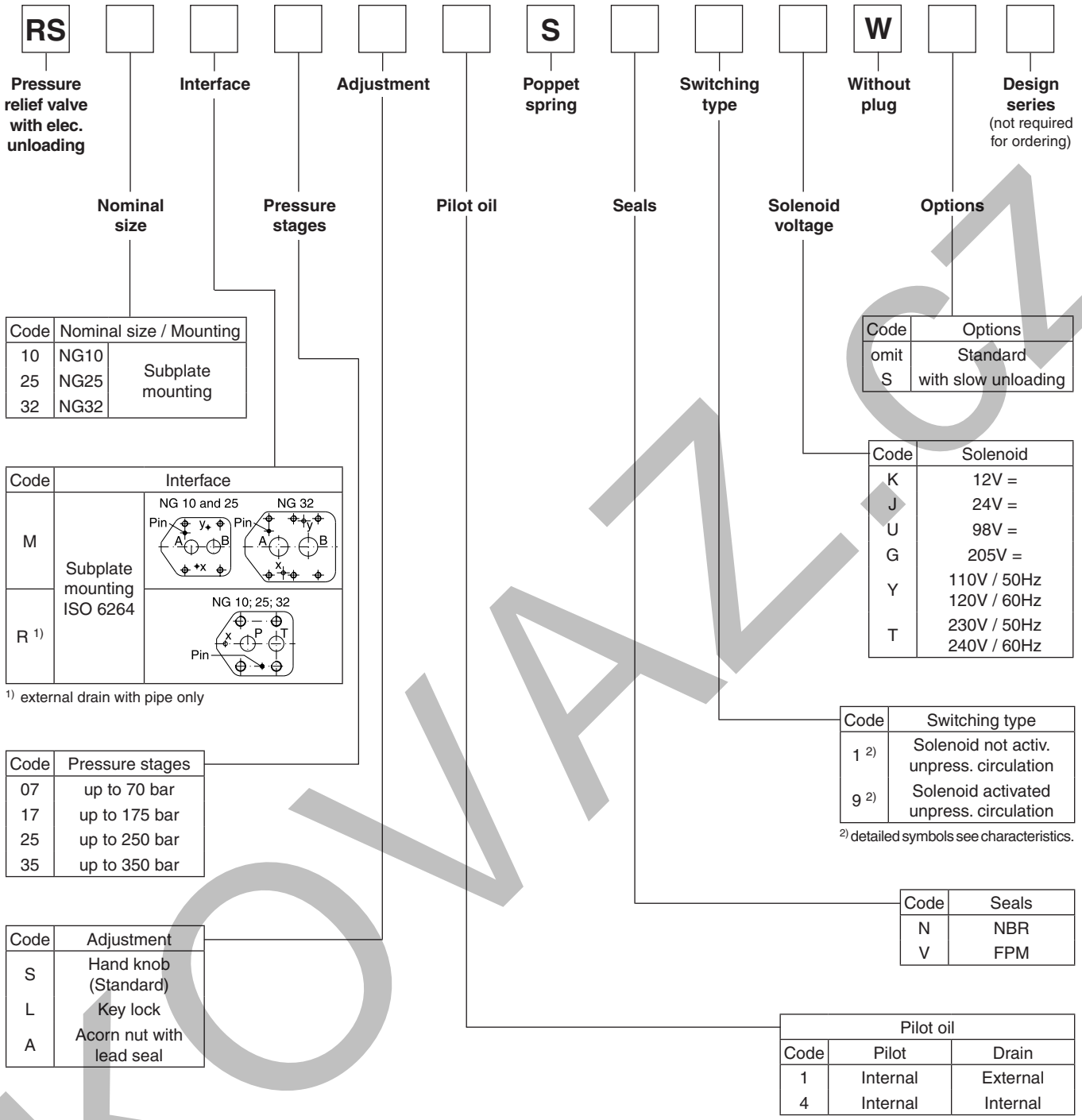


**4**

**DENISON** Hydraulics

The Denison model code is available for existing applications. Otherwise also refer to Parker model code.

**4**



**Parker**

The Parker model code should be used for all new applications. Otherwise also refer to Denison model code.