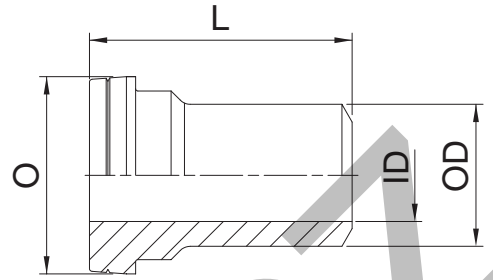


TW3L Weld nipple

O-Lok® ORFS female end / Butt weld end

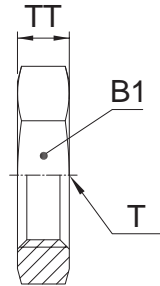


| Tube O.D. mm | ID mm | OD mm | O mm | L mm | Weight (steel) g/1 piece | O-Lok® Steel | O-Lok® Stainless Steel |
|--------------|-------|-------|------|------|--------------------------|----------------|------------------------|
| 6 | 2 | 6 | 13 | 25 | 10 | TW3LS6 | TW3LSS6 |
| 8 | 3 | 8 | 13 | 25 | 12 | TW3LS8 | TW3LSS8 |
| 10 | 4 | 10 | 16 | 26 | 15 | TW3LS10 | TW3LSS10 |
| 12 | 5 | 12 | 19 | 26 | 18 | TW3LS12 | TW3LSS12 |
| 16 | 10 | 16 | 23 | 32 | 25 | TW3LS16 | TW3LSS16 |
| 20 | 13 | 20 | 28 | 37 | 30 | TW3LS20 | TW3LSS20 |
| 25 | 16 | 25 | 34 | 42 | 37 | TW3LS25 | TW3LSS25 |
| 30 | 22 | 30 | 41 | 44 | 43 | TW3LS30 | TW3LSS30 |
| 38 | 28 | 38 | 48 | 49 | 70 | TW3LS38 | TW3LSS38 |

Part numbers shown are part of our current manufacturing programme.
Do not create drawings from these dimensions, they are subject to change and ISO manufacturing allowances.

WLNML Bulkhead locknut

SAE 520118/SAE 52M0118 ISO 8434-3 BHLN



| Thread UN/UNF-2B T | B1 mm | TT mm | Weight (steel) g/1 piece | O-Lok® Steel | O-Lok® Stainless Steel |
|--------------------|-------|-------|--------------------------|-------------------|------------------------|
| 9/16-18 | 22 | 7 | 11 | 4WLNMLS | 4WLNMLSS |
| 11/16-16 | 27 | 8 | 23 | 6WLNMLS | 6WLNMLSS |
| 13/16-16 | 30 | 9 | 26 | 8WLNMLS | 8WLNMLSS |
| 1-14 | 36 | 11 | 38 | 10WLNMLS | 10WLNMLSS |
| 1 3/16-12 | 41 | 11 | 44 | 12WLNMLS | 12WLNMLSS |
| 1 7/16-12 | 46 | 11 | 54 | 16WLNMLS | 16WLNMLSS |
| 1 11/16-12 | 51 | 10 | 73 | 20 WLNLS-S | 20WLNMLSS |
| 2-12 | 60 | 10 | 102 | 24 WLNLS-S | 24WLNMLSS |

Part numbers shown are part of our current manufacturing programme.
Imperial and metric parts may vary in hexagon dimensions.
Do not create drawings from these dimensions, they are subject to change and ISO manufacturing allowances.