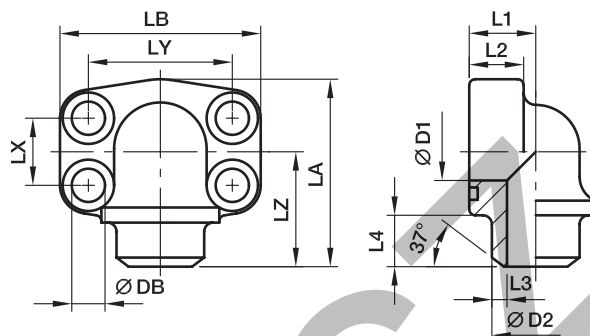


## PAFS-90B SAE 90° 4 bolt flange (butt weld)

SAE 90° Flange / Butt weld tube end  
(ISO 6162-1/-2)



### 3000 PSI Series

Nom. flange size		max.	D1	D2	L1	L2	L3	L4	LX	LY	LZ	DB	Bolts		Weight (steel) kg/piece	Order code*	PN (bar) <sup>1)</sup>	
SAE (in.)	ISO (DN)												(metr.)	(unc.)			S	SS
1/2	13	21.3	13	21.6	18	16	4.3	12	17.5	38.1	40	8.9	M 08×30	5/16×1 1/4	0.31	<b>PAFS080/90B</b>	345	345
3/4	19	26.9	19	27.2	22	18	4.1	12	22.3	47.6	41	10.6	M 10×35	3/8×1 1/2	0.48	<b>PAFS100/90B</b>	345	345
1	25	33.7	25	34.5	28	19	4.7	13	26.2	52.4	50	10.6	M 10×35	3/8×1 1/2	0.72	<b>PAFS102/90B</b>	345	345
1 1/4	32	42.4	31	42.8	30	22	6.0	13	30.2	58.7	57	10.6***	M 10×40	7/16×1 1/2	1.01	<b>PAFS104/90B</b>	276	276
1 1/2	38	48.3	38	48.6	36	25	5.3	14	35.7	69.9	66	13.3	M 12×45	1/2×1 3/4	1.32	<b>PAFS106/90B</b>	207	207
2	51	60.3	50	61.0	41	25	5.5	15	42.9	77.8	66	13.3	M 12×45	1/2×1 3/4	1.74	<b>PAFS108/90B</b>	207	207
2 1/2	64	76.1	60	76.6	50	25	8.0	25	50.8	88.9	77	13.3	M 12×45	1/2×1 3/4	2.79	<b>PAFS110/90B</b>	172	172

### 6000 PSI Series

1/2	13	21.3	13	21.6	18	16	4.3	12	18.2	40.5	40	8.9	M 08×30	5/16×1 1/4	0.31	<b>PAFS401/90B</b>	420	420
3/4	19	26.9	18	27.2	28	20	4.6	12	23.8	50.8	50	10.6	M 10×35	3/8×1 1/2	0.76	<b>PAFS402/90B</b>	420	420
1	25	33.7	22	34.5	26	24	6.3	13	27.8	57.2	57	13.3***	M 12×45	7/16×1 1/2	0.91	<b>PAFS403/90B</b>	420	420
1 1/4	32	42.4	28	42.8	36	25	7.4	13	31.8	66.6	66	15.0**	M 14×50	1/2×1 3/4	1.65	<b>PAFS404/90B</b>	420	420
1 1/4	32	42.4	28	42.8	36	25	7.4	13	31.8	66.6	66	13.3*	M 12×50	-	1.65	<b>PAFS404/12/90B</b>	420	420
1 1/2	38	48.3	32	48.6	41	26	8.3	15	36.5	79.3	65	16.7	M 16×55	5/8×2 1/4	2.37	<b>PAFS405/90B</b>	420	420
2	51	60.3	41	61.0	45	35	10.0	15	44.5	96.8	75	20.6	M 20×70	3/4×2 3/4	4.06	<b>PAFS406/90B</b>	420	420

\*\*DB = 13.3 for UNC Bolts

\*\*\*DB = 12 for UNC Bolts

1) Pressure shown = Item deliverable

PN (bar)  
10 = PN (MPa)

The pressures given here are the maximum allowable for the flange fittings. If the pipe or tube used has a lower pressure rating, then the welded assembly rating will be the lower one, assuming the weld is adequately strong.

**Stainless steel parts may have dimensional deviations. Additional information on request.**

\*Please add the **suffixes** below according to the material/surface required.

Order code suffixes					
Material	Suffix surface and material	Example only 4 bolt flange	Example 4 bolt flange incl. metr. bolts and O-ring	Example 4 bolt flange incl. UNC bolts and O-ring	Standard sealing material (no additional suffix needed)
Steel, blanc oil dipped	S	PAFS080/90BS	PAFS080/90BSM	PAFS080/90BSU	NBR
Stainless steel	SS	PAFS080/90BSS	PAFS080/90BSSM	-	VIT