

CALORCONN VAPOR 160



APPLICATION - ANWENDUNG - USO - APPLICATION

[EN] for general saturated steam services at a maximum working pressure of 6 bars (87 PSI).

[DE] für anwendungen mit sattdampf mit einem maximalen betriebsdruck von 6 bar (87 PSI).

[ES] paso de vapor saturado para uso industrial general a un ejercicio de presión maxima de 6 bares (87 PSI).

[FR] pour services generaux de vapeur saturee a une pression maximale de 6 bar (87 PSI)



STRUCTURE - AUFBAU - ESTRUCTURA - STRUCTURE

[EN] **TUBE:** EPDM rubber, resistant to saturated steam.

REINFORCEMENT: high tensile synthetic textile and antistatic copper wire.

COVER: abrasion, heat, steam, ozone and weather resistant, pin-pricked special synthetic rubber.

SURFACE: smooth with fabric impression.

[DE] **SEELE:** EPDM gummi, sattdampfbeständig.

EINLAGE: hochzugfeste synthetische textleinlage und antistatischer kupferdraht.

DECKE: abriebfest, dampf-, ozon- und witterungsbeständig, speziell geprickter synthetischer gummi.

OBERFLÄCHE: stoffimpression

[ES] **SUSTRATO:** caucho en EPDM resistente al vapor saturado

REFUERZO: inserciones textiles a alta tenacidad con hilo de cobre antiestatico

COBERTURA: caucho especial sintético microforado resistente al calor, al vapor, a la abrasión, al ozono y a los agentes atmosféricos

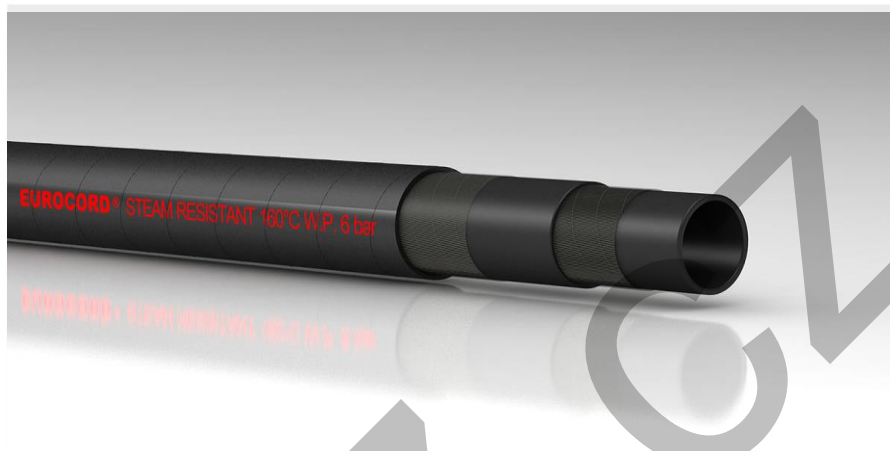
SUPERFICIE: con impresión de tela

[FR] **TUBE:** caoutchouc EPDM, resistant a la vapeur saturee.

RENFORCEMENT: insertion textile haute tenacite et fil de masse antistatique.

REVIEMENT: caoutchouc synthetique special micro-perfore, resistant a l'abrasion, a la chaleur, a la vapeur, a l'ozone et aux agents atmospheriques.

SURFACE: impression textile



⌀	⌀	⌚	⌚	⌘	Ⓜ	↷	Ⓜ
mm	mm	bar	bar	bar	gr/mt	mm	mt
12	23	6	60	-	320	127	40
15	26	6	60	-	387	150	40
18	30	6	60	-	485	180	40
19	31	6	60	-	511	190	40
25	37	6	60	-	604	254	40
30	45	6	60	-	958	300	40
32	46	6	60	-	914	320	40
35	50	6	60	-	1102	350	40
40	56	6	60	-	1339	400	40
45	64	6	60	-	1503	445	40
50	67	6	60	-	1638	508	40
60	82	6	60	-	1803	600	40



RECOMMENDED CLAMP/COLLAR - EMPFOHLENE KLAMMER/KRAGEN - ABRAZADERA/COLLAR RECOMENDADO - COLLIER/COLLIER RECOMMANDÉ

STF - Hose clamps with screw / STC – Hose clamp with collar – SGT – step less



-40°C / +165°C
-40°F / +329°F



NORME: ISO 1307

MARCATURA: EUROCORD® STEAM
RESISTANT 160°C W.P. 6 BAR