

## EHVF series 330 bar, 10 to 50 Liters - FLANGED FLUID PORT

Standard version (Carbon Steel shell/NBR mix) compatible with mineral oils <sup>2</sup>.

Max. working pressure: 330 bar  
Max. flow rate: 900 l/min  
Temperature Range: -20°C to 80°C

Gas Connection: 7/8" 18 UNF  
Oil Connection Flange: 1" - 1/2 SAE 6000

Type	Valve model see drawing	Effective Gas vol. Liters	Weight kg	Dimensions in mm A (max Height)
EHVF 10-330/90-A25RC-200	C	9.2	31	627
EHVF 12-330/90-A25RC-200	C	11	36	727
EHVF 20-330/90-A25RC-200	C	17.8	49	937
EHVF 24,5-330/90-A25RC-200	C	22.5	56	1072
EHVF 32-330/90-A25RC-200	C	32	81	1460
EHVF 42-330/90-A25RC-200	C	42	87	1602
EHVF 50-330/90-A25RC-200	C	48.5	110	1976
EHVF 57-330/90-A25RC-200	C	51	116	2072

\* All dimensions in mm and are subject to manufacturing tolerances

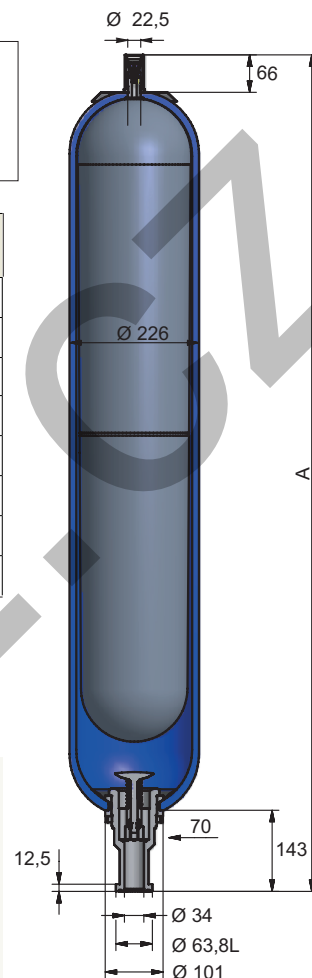
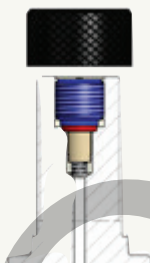
<sup>1</sup> Temperature range can change depending on shell and elastomer material.

Please see bladder materials and Type (page 35)

<sup>2</sup> For other fluids: consult Parker | 3 For Fluid group 1 consideration: consult Parker

## Model of valve stem

C-type  
7/8" 14 UNF



EHVF series 330 bar, 10 to 50 Liters - FLANGED FLUID PORT /  
Spare Parts & Accessories

Type	Kit Flange Type Part number	Clamps Model (quantity) Part number	Support Bracket Model Part number	Mounting Frame Model Part number	Lifting Eye on gas side Model Part number	Complete Repair Kit Model Part number
EHVF 10-330/90-A25RC-200 10844901125	BR 400-38 35132400123	D226 2 20251503648	CE 159A 20109003620	EF2 20217600125	10912700200	KIT REC. EHVF 10-250/330 DIA22 VALVE C 19034600225
EHVF 12-330/90-A25RC-200 10867301125	BR 400-38 35132400123	D226 2 20251503648	CE 159A 20109003620	EF2 20217600125	10912700200	KIT REC. EHVF 12-250/330 DIA22 VALVE C 19034700225
EHVF 20-330/90-A25RC-200 10845001125	BR 400-38 35132400123	D226 2 20251503648	CE 159A 20109003620	EF2 20217600125	10912700200	KIT REC. EHVF 20-250/330 DIA22 VALVE C 19034800225
EHVF 24,5-330/90-A25RC-200 10845101125	BR 400-38 35132400123	D226 2 20251503648	CE 159A 20109003620	EF2 20217600125	10912700200	KIT REC. EHVF 24,5-250/330 DIA22 VALVE C 19035100225
EHVF 32-330/90-A25RC-200 10845201125	BR 400-38 35132400123	D226 2 20251503648	CE 159A 20109003620	EF3 20217700125	10912700200	KIT REC. EHVF 32-250/330 DIA22 VALVE C 19034900225
EHVF 42-330/90-A25RC-200 11132501125	BR 400-38 35132400123	D226 2 20251503648	CE 159A 20109003620	EF3 20217700125	10912700200	KIT REC. EHVF 42-250/330 DIA22 VALVE C 19062200225
EHVF 50-330/90-A25RC-200 11077001125	BR 400-38 35132400123	D226 2 20251503648	CE 159A 20109003620	EF3 20217700125	10912700200	KIT REC. EHVF 50-250/330 DIA22 VALVE C 19054400225
EHVF 57-330/90-A25RC-200 11132601125	BR 400-38 35132400123	D226 2 20251503648	CE 159A 20109003620	EF3 20217700125	10912700200	KIT REC. EHVF 57-250/330 DIA22 VALVE C 19062300225

## EHVF series 350 bar, 2.5 to 10 Liters - FLANGED FLUID PORT

Standard version (Carbon Steel shell/NBR mix) compatible with mineral oils <sup>2</sup>.According to PED 2014/68/EU, EN 14359, Fluid Group 2 <sup>3</sup>.

Max. working pressure: 350 bar  
Max. flow rate: 450 l/min  
Temperature Range: -20°C to 80°C

Gas Connection: 7/8" 14 UNF  
Oil Connection Flange: 1" SAE 6000

Type	Valve model (see drawing)	Effective Gas vol. Liters	Weight kg	Dimensions in mm		
				A max Height	B	øD
EHVF 2.5-350/90-A25SC-200	C	2.4	11	595	111	116
EHVF 4-350/90-A25SC-200	C	3.7	15	480	110	170
EHVF 5-350/90-A25SC-200	C	5.0	17	944	111	116
EHVF 6-350/90-A25SC-200	C	6.0	20	606	110	170
EHVF 10-350/90-A25SC-200	C	10	31	871	110	170

<sup>1</sup>Temperature range can change depending on shell and elastomer material.

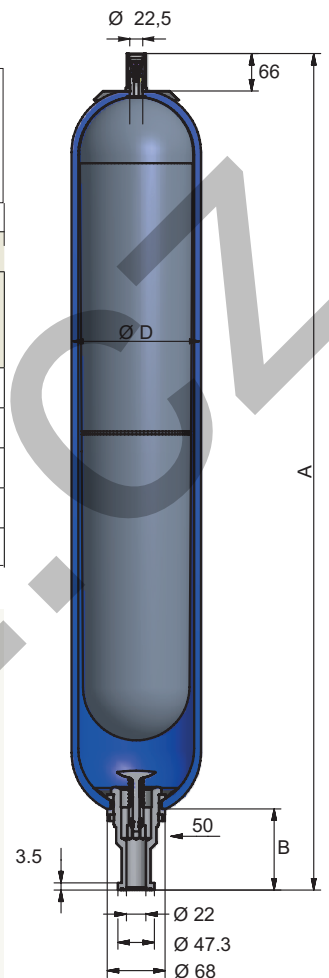
Please see bladder materials and Type (page 35) |

<sup>2</sup> For other fluids consult Parker

All dimensions in mm and are subject to manufacturing tolerances

Model of valve stem

C-type  
7/8" 14 UNF  
(integrated)

EHVF series 350 bar, 2.5 to 10 Liters -  
FLANGED FLUID PORT / Spare Parts & Accessories

Type Part number	Flange Type Part number	Clamps Model (quantity) Part number	Support Bracket Model Part number	Mounting Frame Model Part number	Lifting Eye on gas side Model Part number	Complete Repair Kit Model Part number
EHVF 2.5-350/90-A25SC 10861501125	BR 400-25 35132600123	E114 2 20251003648	CE89 20151903620	-	10912700200	KIT EHVF 2.5-350 DIA22 VALVE C 19035300225
EHVF 4-350/90-A25SC 10857601125	BR 400-25 35132600123	E168 1 20251303648	CE108 20118703620	EF1 20217500125	10912700200	KIT EHVF 4-350 DIA22 VALVE C 19035400225
EHVF 5-350/90-A25SC 10861601125	BR 400-25 35132600123	E114 2 20251003648	CE89 20151903620	-	10912700200	KIT EHVF 5-350 DIA22 VALVE C 19035500225
EHVF 6-350/90-A25SC 10857701125	BR 400-25 35132600123	E168 1 20251303648	CE108 20118703620	EF1 20217500125	10912700200	KIT EHVF 6-350 DIA22 VALVE C 19035600225
EHVF 10-350/90-A25SC 10859901125	BR 400-25 35132600123	E168 2 20251303648	CE108 20118703620	EF1 20217500125	10912700200	KIT EHVF 10-350 DIA22 VALVE C 19035700225

EHVF series 330 bar, 10 to 57 Liters - HIGH FLOW FLUID PORT /  
Spare Parts & Accessories

Type Part number	Adaptor* Threaded Part number	Clamps Model (quantity) Part number	Support Bracket Model Part number	Mounting Frame Model Part number	Lifting Eye on gas side Model Part number	Complete Repair Kit Model Part number
EHV 10-330/90-A25HC-200 10874801125	G 1" cyl 04557000223	D226 2 20251503648	CE 159A 20109003620	EF2 20217600125	10912700200	KIT EHV 10-330 DIA22 VALVE C 19028900225
EHV 12-330/90-A25HC-200 10874901125	G 1" cyl 04557000223	D226 2 20251503648	CE 159A 20109003620	EF2 20217600125	10912700200	KIT EHV 12-330 DIA22 VALVE C 19032100225
EHV 20-330/90-A25HC-200 10846301125	G 1" cyl 04557000223	D226 2 20251503648	CE 159A 20109003620	EF2 20217600125	10912700200	KIT EHV 20-330 DIA22 VALVE C 19029000225
EHV 24.5-330/90-A25HC-200 10875001125	G 1" cyl 04557000223	D226 2 20251503648	CE 159A 20109003620	EF2 20217600125	10912700200	KIT EHV 24,5-330 DIA22 VALVE C 19029400225
EHV 32-330/90-A25HC-200 10846501125	G 1" cyl 04557000223	D226 2 20251503648	CE 159A 20109003620	EF3 20217700125	10912700200	KIT EHV32-330 DIA22 VALVE C 19029100225
EHV 50-330/90-A25HC-200 11091501125	G 1" cyl 04557000223	D226 2 20251503648	CE 159A 20109003620	EF3 20217700125	10912700200	KIT EHV 50-330 DIA22 VALVE C 19054100225

\* for more adaptors option see page 32

EHVF series 350 bar, 2.5 to 10 Liters - HIGH FLOW FLUID PORT /  
Spare Parts & Accessories

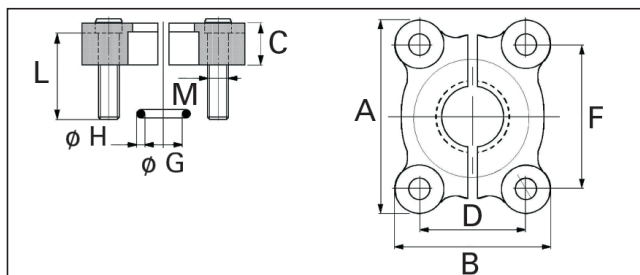
Type Part number	Adaptor* Threaded Part number	Clamps Model (quantity) Part number	Support Bracket Model Part number	Mounting Frame Model Part number	Lifting Eye Model Part number	Complete Repair Kit Model Part number
EHV 2.5-350/90-A25EC-200 10846101125	G 3/4" cyl 04555200223	E114 2 20251003648	CE 89 20151903620	-	-	KIT EHV 2.5-350 D22 VALVE C 19029800225
EHV 4-350/90-A25EC-200 10846701125	G 3/4" cyl 04555200223	E168 2 20251303648	CE108 20118703620	EF1 20217500125	-	KIT EHV 4-350 D22 VALVE C 19029900225
EHV 5-350/90-A25EC-200 10874601125	G 3/4" cyl 04555200223	E114 2 20251003648	CE 89 20151903620	-	-	KIT EHV 5-350 D22 VALVE C 19030000225
EHV 6-350/90-A25EC-200 10874701125	G 3/4" cyl 04555200223	E168 2 20251303648	CE108 20118703620	EF1 20217500125	-	KIT EHV 6-350 D22 VALVE C 19030100225
EHV 1 0-350/90-A25EC-200 10845901125	G 3/4" cyl 04555200223	E168 2 20251303648	CE108 20118703620	EF1 20217500125	10912700200	KIT EHV 10-350 D22 VALVE C 19030200225

\* for more adaptors option see page 32

## EHVF Flanges, Carbon Steel

Accumulator model	Type	Part Number	A	B	C	D	F	øG	ØH	L	M
EHVF 2,5 to 10 Liters	FLANGE KIT BR 400-25	35132600123	81	70	24	27,8	57,2	32,92	3,53	45	M12
EHVF 10 to 57 Liters	FLANGE KIT BR 400-38	35132400123	113	95	30	36,5	79,3	47,22	3,53	55	M16

According ISO 6162-2



## How to order Bladder Accumulators, EHV series: 330 bar - 690 bar

EHV	20	330	90	A	25	G	C	2	00	/	100
01	02	03	04	05	06	07	08	09	10		11
01	Series	EHV = High pressure bladder EHVF = High pressure bladder flange ETHV = High pressure transfer bladder									
02	Gas Volume (L) examples	0.2 = 0.2 L 20 = 20 L 24.5 = 24.5 L									
03	Max. Working Pressure	330 = 330 bar 350 = 350 bar 690 = 690 bar 120 = 120 bar (stainless steel range)									
04	Approval Type if the product is not CE, use highest MWP according to re- gulation relevant to the product. See: approvals	00 = PED2014/68/EU, art. 4.3 11 = PED2014/68/EU + BV Marine 13 = PED2014/68/EU, art. 4.3 + BV Marine 23 = PED2014/68/EU, art. 4.3 + ABS 24 = PED2014/68/EU + DNVGL 41 = PED2014/68/EU + ABS 43 = PED2014/68/EU, art. 4.3 + DNVGL 48 = ASME VIII div 1 app22 71 = CUTR 032/2013 83 = PED2014/68/EU + AS 1210 86 = PED2014/68/EU + ASME VIII div 1 app 22 + SELO 88 = PED2014/68/EU + SELO 90 = PED2014/68/EU 91 = ASME VIII div 1 app 22 + AS1210 94 = PED2014/68/EU + ASME VIII div 1 app 2 AA = PED2014/68/EU + NR13 AE = ASME VIII div 1 + NR13 AU = ASME VIII div 1 + CUTR 032/2013									
05	Material (Shell & Fluid Port)	A = All parts in carbon steel with epoxy paint for shell only (-40°C to +80°C) B = Carbon steel shell + internal protection epoxy 80 µm + stainless steel fluid port and valve D = Carbon steel shell + int./ext. protection blue rilsan 200 - 300 µm + carbon steel fluid port and valve E = Carbon steel shell + stainless steel fluid port and valve I = All parts in stainless steel (-40°C to +80°C) R = Carbon steel shell + int./ext. protection blue rilsan 200 - 300 µm + stainless steel fluid port and valve Z = Special									
06	Bladder Rubber Mix	02 = Hydrin C (-32°C to +115°C) 10 = Nitrile low temperature (-30°C to +80°C) 20 = Nitrile heavy duty (-6°C to +100°C) 25 = Nitrile standard (-20°C to +100°C) 30 = Nitrile low permeability (-5°C to +115°C) 35 = Nitrile high temperature (0°C to +130°C) 37 = Nitrile extreme low temp (-59°C to +110°C) 40 = Butyl (-15°C to +120°C) 47 = EPDM (-40°C to +140°C) 80 = Viton (-20°C to +140°C) E2 = Nitrile (-15°C to +100°C) XL = Nitrile very low permeation (-10°C to +100°C)									
07	Fluid Port Configuration	A = Gas cyl ½" (120 L / min) B = Gas cyl ¾" (240 L / min) C = Gas cyl 1" (360 L / min) D = Gas cyl 1¼" (450 L / min) E = Gas cyl 1½" DA (570 L / min) G = Gas cyl 2" (900 L / min) H = Gas cyl 2" DA (1200 L / min) J = Gas cyl. 2½" GD (1800 L / min) M = Metric M40 x 1.5 N = Metric M50 x 1.5 R = EHV 10 - 57 L (900 L / min) Flange 1½" SAE 6000 S = EHV 2.5 - 10 L (450 L / min) Flange 1" SAE 6000 Z = Special									
08	Gas Valve Configuration	0 = No gas valve A = Gas valve type 5/8" - 18 UNF B = Gas valve type 7/8" - 14 UNF C = Gas valve type 7/8" - 14 UNF integrated D = Gas valve type 5/8" - 18 UNF integrated E = Gas valve type 7/8" - 14 UNF high pressure F = Gas valve type 5/8" - 18 UNF + burst disc G = Gas valve type 7/8" - 14 UNF + burst disc H = Gas valve type 7/8" - 14 UNF integr. + burst disc I = Gas valve type 5/8" - 18 UNF integr. + burst disc J = Gas valve type 7/8" - 14 UNF high pr. + burst disc									
09	Fluid Type	0 = Not applicable 1 = Fluid type 1 - CE fluid group 1 2 = Fluid type 2 - CE fluid group 2									
10	Special	00 = None EX = ATEX EZ = ATEX + other special configuration EU = All components sourced in EU SP = Special Painting D1 = Standard Documentation + leak test report D2 = Standard Documentation + design calculation note ZZ = Special configuration or several options ASME certified accumulator according to ASME VIII Div. 1: 30 MWP = 207 bar ( 3000 PSI) 36 MWP = 248 bar ( 3600 PSI) 38 MWP = 262 bar (3800 PSI) 40 MWP = 276 bar (4000 PSI) 50 MWP = 345 bar ( 5000 PSI)									
11	Pre-Charge at 20 °C (bar)	100 = 100 bar (example) Blank : nitrogen storage pre-charge pressure (from 3 to 5 bar).									