

Tube clamps series C (Heavy series) – Components

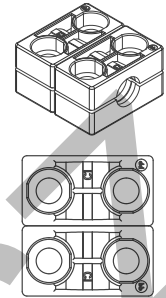
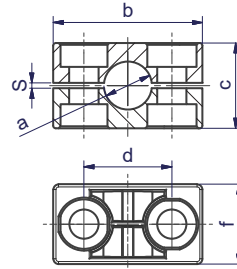
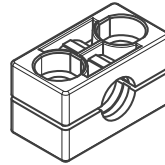
DIN 3015, part 2

Order codes for clamp halves:

Material	Interior surface	Order code
Polypropylene	grooved	RCP
	smooth	RCPG ¹⁾
Polyamide	grooved	RCN
	smooth	RCNG ¹⁾
Rubber	grooved	RCVR ¹⁾²⁾
	smooth	RCVG ¹⁾²⁾
Aluminium	grooved	RCA

(Please exchange as required standard abbreviation RCP in column for "clamp halves")

For flame- or corrosion retardant materials, please refer to page S5.



Please order 2x the single clamp (e.g. 2x RCP...)

clamp size	Tube O.D. mm a	Tube NB	Tube O.D.	1 part 2 clamp halves					dimensions: f	
				RCP... Order code	b	c	d	s		f
1	6.0	G 1/8	5/16	RCP106X	56	32	33	2	30	60
	8.0		3/8	RCP108X						
	9.5		RCP109.5X							
	10.0		RCP110X							
	12.0	RCP112X								
	12.7	1/2	RCP112.7X							
	13.5	G 1/4	RCP113.5X							
	14.0	RCP114X								
	15.0	RCP115X								
	16.0	RCP116X								
17.2	G 3/8	5/8	RCP117.2X							
18.0		RCP118X								
2	19.0	G 1/2	3/4	RCP219X	71	48	45	2	30	60
	20.0		RCP220X							
	21.3		RCP221.3X							
	22.0		RCP222X							
	23.0	RCP223X								
	25.0	1	RCP225X							
	25.4	G 3/4	1	RCP225.4X						
	26.9		RCP226.9X							
	28.0		RCP228X							
	30.0		RCP230X							
3	30.0	G 1	1 1/4	RCP330X	86	60	60	2	30	60
	32.0		RCP332X							
	33.7		RCP333.7X							
	35.0	1 1/2	RCP335X							
	38.0	RCP338X								
	40.0	G 1 1/4	RCP340X							
42.0	RCP342X									
4	38.0	G 1 1/4	1 1/2	RCP438X	117	90	90	3	45	90
	40.0		RCP440X							
	42.0		RCP442X							
	45.0	G 1 1/2	RCP445X							
	48.3		RCP448.3X							
	50.0		RCP450X							
	51.0	2	RCP451X							
	52.0	RCP452X								
	55.0	G 2	2 1/4	RCP455X						
	57.0		RCP457X							
	60.3		RCP460.3X							
	63.0		2 1/2	RCP463X						
65.0	RCP465X									
70.0	2 3/4		RCP470X							

Continuation see next page ...

Tube clamps series C (Heavy series) – Components (Continued)

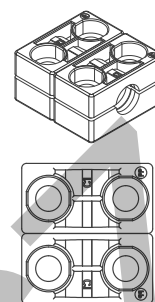
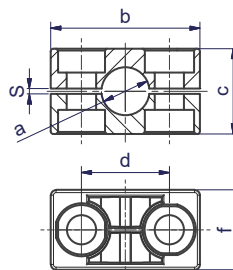
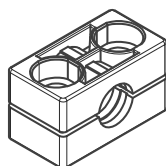
DIN 3015, part 2

Order codes for clamp halves:

Material	Interior surface	Order code
Polypropylene	grooved	RCP
	smooth	RCPG ¹⁾
Polyamide	grooved	RCN
	smooth	RCNG ¹⁾
Rubber	grooved	RCVR ¹⁾²⁾
	smooth	RCVG ¹⁾²⁾
Aluminium	grooved	RCA

(Please exchange as required standard abbreviation RCP in column for “clamp halves”)

For flame- or corrosion retardant materials, please refer to page S5.



Please order 2x the single clamp (e.g. 2x RCP...)

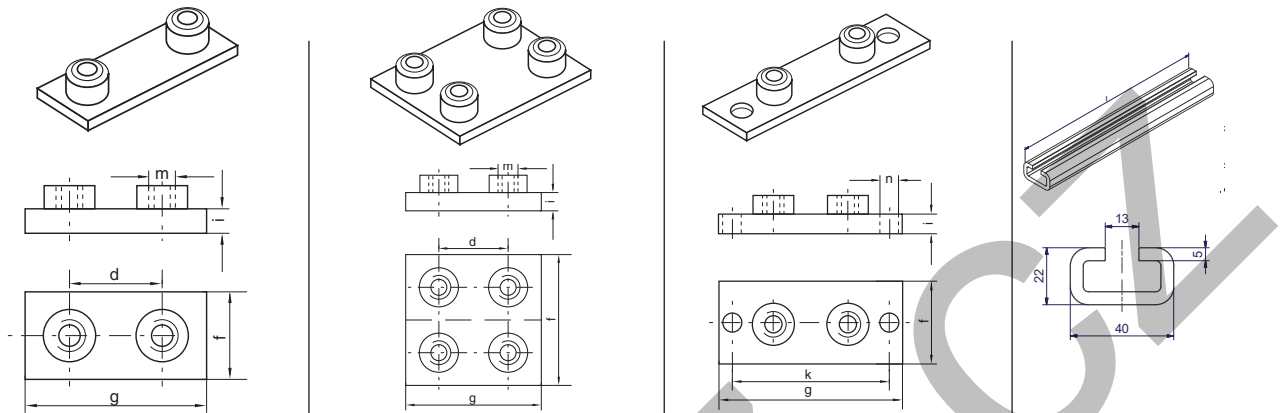
clamp size	Tube O.D. mm a	Tube NB	Tube O.D.	RCP... Order code	1 part 2 clamp halves dimensions:					dimensions: f	
					b	c	d	s	f		
5	65.0	G 2 1/2	2 3/4	RCP565X	154	120	122	5	60	120	
	70.0			RCP570X							
	73.0			RCP573X							
	75.0			RCP575X							
	76.1			RCP576.1X							
	80.0	RCP580X									
	82.5	RCP582.5X	G 3	3 1/4							RCP585X
	85.0	RCP585X									
	88.0	RCP588X									
	88.9	RCP588.9X									
90.0	RCP590X										
6	90.0	G 3 1/2	4	RCP690X	206	168	168	6	80	160	
	97.0			RCP697X							
	100.0			RCP6100X							
	101.6			RCP6101.6X							
	108.0	RCP6108X	G 4	4 1/4							RCP6114.3X
	114.3	RCP6114.3X									
	115.0	RCP6115X									
	120.0	RCP6120X									
	127.0	RCP6127X									
	127.0	RCP6127X									
7	127.0	G 5	5	RCP7127X	251	200	205	6	90	180	
	130.0			RCP7130X							
	133.0			RCP7133X							
	140.0			RCP7140X							
	150.0			RCP7150X							
	152.4	RCP7152.4X	G 5 1/2	6							RCP7159X
	159.0	RCP7159X									
	165.1	RCP7165.1X									
	168.3	RCP7168.3X									
	168.3	RCP7168.3X									
8	168.3	G 6	6 5/8	RCP8168.3X	320	270	265	6	120	240	
	177.8			RCP8177.8X							
	190.0	RCP8190X	G 8	7 5/8							RCP8193.7X
	193.7	RCP8193.7X									
	203.0	RCP8203X									
	203.0	RCP8203X									
	219.1	RCP8219.1X									
	220.0	RCP8220X									
9	219.1	G 8	8 5/8	RCP9219.1X	470	410	395	20	162	324	
	244.5			RCP9244.5X							
	273.0	RCP9273X	G 10	10 3/4							RCP9323.9X
	323.9	RCP9323.9X									
10	355.6	G 14	12 3/4	RCP10355.6X	630	530	534	20	182	364	
	406.4			RCP10406.4X							

1) Only sizes 1–8

2) When assembling solid rubber clamps, covering plates, hexagon screws and locking washers must be used.

Tube clamps series C (Heavy series) – Components

DIN 3015, part 2



clamp size	weld plate					double weld plate					weld/screw plate					mounting rail				
	AP C... Order code	dimensions:					APD C... Order code	dimensions:					APL C... Order code	dimensions:					TS C... Order code	length: l
		d	f	g	i	m		d	f	g	i	m		g	f	i	k	n		
1	APC1...*	33	30	73	8	M10	APDC1...*	33	60	73	8	M10	APLC1...*	113	30	8	85	11	TSC1X	1 m
2	APC2...*	45	30	84	8	M10	APDC2...*	45	60	84	8	M10	APLC2...*	125	30	8	97	11	TSC1VERZX	
3	APC3...*	60	30	100	8	M10	APDC3...*	60	60	100	8	M10	APLC3...*	140	30	8	112	11	TSC14571X	
4	APC4...*	90	45	140	10	M12	APDC4...*	90	90	140	10	M12	APLC4...*	190	45	10	160	14	TSC2X	2 m
5	APC5...*	122	60	180	10	M16	APDC5...*	122	120	180	10	M16	APLC5...*	240	60	10	205	18	TSC2VERZX	
6	APC6...*	168	80	225	15	M20	APDC6...*	168	160	225	15	M20	APLC6...*	310	80	15	270	22	TSC24571X	
7	APC7...*	205	90	270	15	M24	APDC7...*	205	180	270	15	M24	APLC7...*	370	90	15	320	26		
8	APC8...*	265	120	340	25	M30	APDC8...*	265	240	340	25	M30	APLC8...*	450	120	25	390	33		
9	APC9...*	395	160	520	30	M30	APDC9...*	395	330	520	30	M30								
10	APC10...*	534	180	680	30	M30	APDC10...*	534	364	680	30	M30								

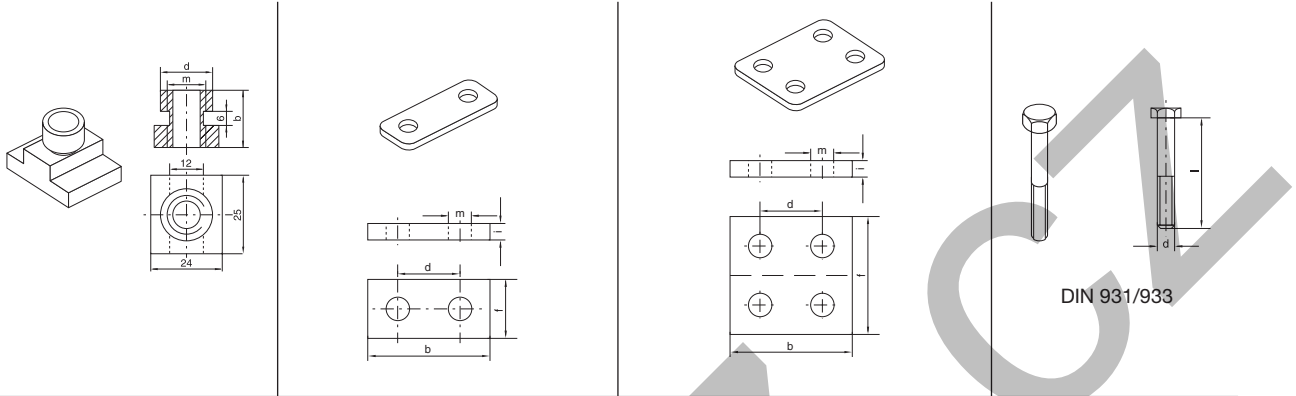
Complete programme range please refer to page S34.

*Please add the suffix below according to the surface/material required.

Order code suffixes		
Surface/material	Suffix	Example
Steel, phosphated	X	APC1X
Steel, zinc plated, Cr(VI)-free	VZX	APC1VZX
Stainless Steel 1.4571	4571X	APC14571X

Tube clamps series C (Heavy series) – Components

DIN 3015, part 2



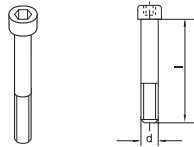
clamp size	rail nut			cover plate					double cover plate					hexagon head				
	TM C... Order code	dimensions:			DP C... Order code	dimensions:					DPD C... Order code	dimensions:					SS C... Order code	dimensions:
		b	d	m		b	d	f	i	m		b	d	f	i	m		d × L
1	TMC1VZX TMC14571X	20	12.0	M10	DPC1...*	55	33	30	8	11	DPDC1...*	55	33	60	8	11	SSC1...*	M 10×40
2					DPC2...*	70	45	30	8	11	DPDC2...*	70	45	60	8	11	SSC2...*	M 10×60
3					DPC3...*	85	60	30	8	11	DPDC3...*	85	60	60	8	11	SSC3...*	M 10×70
4	TMC4VZX TMC44571X	23	12.5	M12	DPC4...*	115	90	45	10	14	DPDC4...*	115	90	90	10	14	SSC4...*	M 12×100
5					DPC5...*	152	122	60	10	18	DPDC5...*	152	122	120	10	18	SSC5...*	M 16×130
6					DPC6...*	205	168	80	15	22	DPDC6...*	205	168	160	15	24	SSC6...*	M 20×190
7					DPC7...*	251	205	90	15	28	DPDC7...*	250	205	180	15	28	SSC7...*	M 24×220
8					DPC8...*	320	265	120	25	35	DPDC8...*	322	265	240	25	35	SSC8...*	M 30×300
9					DPC9...*	470	395	160	30	35	DPDC9...*	466	395	330	30	35	SSC9...*	M 30×450
10					DPC10...*	630	534	180	30	35	DPDC10...*	630	534	360	30	35	SSC10...*	M 30×560

*Please add the suffix below according to the surface/material required.

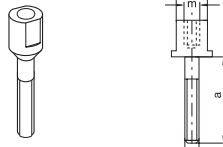
Order code suffixes		
Surface/material	Suffix	Example
Steel, phosphated	X	DPC1X
Steel, zinc plated, Cr(VI)-free	VZX	DPC1VZX
Stainless Steel 1.4571	4571X	DPC14571X

Tube clamps series C (Heavy series) – Components

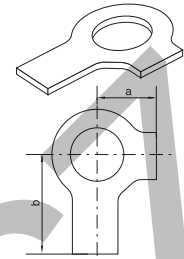
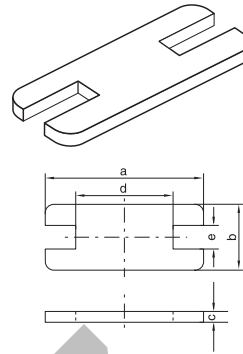
DIN 3015, part 2



ISO 4762



DIN 938



clamp size	socket head		stacking			locking plate ¹⁾					locking washer ²⁾				
	IS C... Order code	dimensions: d x L	AS C... Order code	dimensions:			dimensions:					US C... Order code	dimensions:		
				a	m	SW	a	b	c	d	e		a	b	
1	ISC1...*	M 10×45	ASC1...*	25	M10	15	SPC1...*	55	30	8	14	15.5	USC1X ³⁾ USC14571X	13	22
2	ISC2...*	M 10×60	ASC2...*	40	M10	15	SPC2...*	70	30	8	26	15.5			
3	ISC3...*	M 10×70	ASC3...*	50	M10	15	SPC3...*	85	30	8	41	15.5			
4	ISC4...*	M 12×100	ASC4...*	80	M12	17	SPC4...*	115	45	10	69	17.5	USC4X ³⁾ USC44571X	15	28
5	ISC5...*	M 16×130	ASC5...*	110	M16	21	SPC5...*	152	60	10	97	21.5	USC5X ³⁾ USC54571X	18	32
6	ISC6...*	M 20×190	ASC6...*	155	M20	27	SPC6...*	205	80	15	137	27.5	USC6X ³⁾ USC64571X	21	36
7	ISC7...*	M 24×220	ASC7...*	180	M24	30	SPC7...*	250	90	15	169	30.5	USC7X ³⁾ USC74571X	25	42
8	ISC8...*	M 30×300	ASC8...*	250	M30	36	SPC8...*	320	120	25	219	36.5	USC8X ³⁾ USC84571X	32	52
9	ISC9...*	M 30×450													
10	ISC10...*	M 30×560													

¹⁾ The use of stacking screws necessitates the use of locking plates in the construction assembly!

²⁾ When assembling solid rubber clamps, covering plates, hexagon screws and locking washers must be used.

³⁾ Material = Steel, zinc plated, Cr(VI)-free

*Please add the suffix below according to the surface/material required.

Order code suffixes		
Surface/material	Suffix	Example
Steel, phosphated	X	ISC1X
Steel, zinc plated, Cr(VI)-free	VZX	ISC1VZX
Stainless Steel 1.4571	4571X	ISC14571X

Tube clamps

Tube clamps series C – Complete range

Order codes for clamp halves:

Material	Interior surface	Order code
Polypropylene	grooved	RCP
	smooth	RCPG ¹⁾
Polyamide	grooved	RCN
	smooth	RCNG ¹⁾
Rubber	grooved	RCVR ¹⁾²⁾
	smooth	RCVG ¹⁾²⁾
Aluminium	grooved	RCA

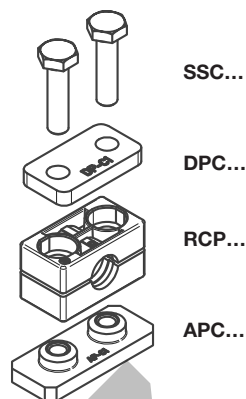
(Please exchange as required standard abbreviation RCP in column for "Order code")

For flame- or corrosion retardant materials, please refer to page S5.

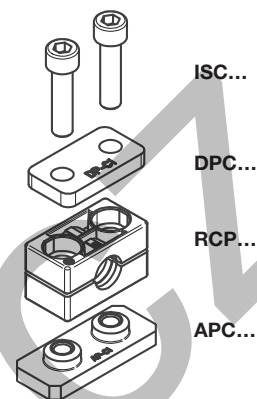
The steel parts of kits 1 and 2 are phosphated.

Other compositions available on request.

2 clamp halves, weld plate,
cover plate, hex. head bolt



2 clamp halves, weld plate,
cover plate, socket head bolt



clamp size	Tube O.D. mm	Tube NB	Tube O.D.	Order code	Order code
1	6.0	G 1/8	5/16	RCP1-106	RCP2-106
	8.0		3/8	RCP1-108	RCP2-108
	9.5			RCP1-109.5	RCP2-109.5
	10.0	G 1/4	1/2	RCP1-110	RCP2-110
	12.0			RCP1-112	RCP2-112
	12.7			RCP1-112.7	RCP2-112.7
	13.5			RCP1-113.5	RCP2-113.5
	14.0	G 3/8	5/8	RCP1-114	RCP2-114
	15.0			RCP1-115	RCP2-115
	16.0			RCP1-116	RCP2-116
17.2	RCP1-117.2			RCP2-117.2	
18.0	RCP1-118			RCP2-118	
2	19.0			G 1/2	3/4
	20.0	RCP1-220	RCP2-220		
	21.3	RCP1-221.3	RCP2-221.3		
	22.0	RCP1-222	RCP2-222		
	23.0	G 3/4	1	RCP1-223	RCP2-223
	25.0			RCP1-225	RCP2-225
	25.4			RCP1-225.4	RCP2-225.4
	26.9			RCP1-226.9	RCP2-226.9
	28.0			RCP1-228	RCP2-228
	30.0			RCP1-230	RCP2-230
3	30.0	G 1	1 1/4	RCP1-330	RCP2-330
	32.0			RCP1-332	RCP2-332
	33.7			RCP1-333.7	RCP2-333.7
	35.0	G 1 1/4	1 1/2	RCP1-335	RCP2-335
	38.0			RCP1-338	RCP2-338
	40.0			RCP1-340	RCP2-340
42.0			RCP1-342	RCP2-342	
4	38.0	G 1 1/4	1 1/2	RCP1-438	RCP2-438
	40.0			RCP1-440	RCP2-440
	42.0			RCP1-442	RCP2-442
	45.0	G 1 1/2	2	RCP1-445	RCP2-445
	48.3			RCP1-448.3	RCP2-448.3
	50.0			RCP1-450	RCP2-450
	51.0	G 2	2 1/4	RCP1-451	RCP2-451
	52.0			RCP1-452	RCP2-452
	55.0			RCP1-455	RCP2-455
	57.0			RCP1-457	RCP2-457
	60.3			RCP1-460.3	RCP2-460.3
	63.0			RCP1-463	RCP2-463
65.0	2 1/2	RCP1-465	RCP2-465		
70.0		RCP1-470	RCP2-470		

Continuation see next page ...

Tube clamps series C – Complete range (Continued)

Order codes for clamp halves:

Material	Interior surface	Order code
Polypropylene	grooved	RCP
	smooth	RCPG ¹⁾
Polyamide	grooved	RCN
	smooth	RCNG ¹⁾
Rubber	grooved	RCVR ¹⁾²⁾
	smooth	RCVG ¹⁾²⁾
Aluminium	grooved	RCA

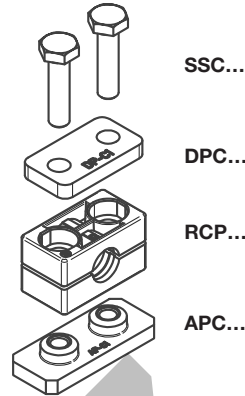
(Please exchange as required standard abbreviation RCP in column for "Order code")

For flame- or corrosion retardant materials, please refer to page S5.

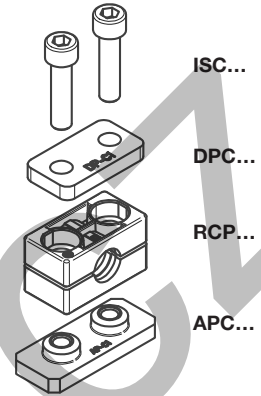
The steel parts of kits 1 and 2 are phosphated.

Other compositions available on request.

2 clamp halves, weld plate,
cover plate, hex. head bolt



2 clamp halves, weld plate,
cover plate, socket head bolt



clamp size	Tube O.D. mm	Tube NB	Tube O.D.	Order code	Order code			
5	65.0	G 2 1/2	3	RCP1-565	RCP2-565			
	70.0			RCP1-570	RCP2-570			
	73.0			RCP1-573	RCP2-573			
	75.0			RCP1-575	RCP2-575			
	76.1			RCP1-576.1	RCP2-576.1			
	80.0			RCP1-580	RCP2-580			
	82.5			RCP1-582.5	RCP2-582.5			
	85.0			RCP1-585	RCP2-585			
	88.0			RCP1-588	RCP2-588			
	88.9			RCP1-588.9	RCP2-588.9			
90.0	RCP1-590	RCP2-590						
6	90.0	G 3 1/2	4	RCP1-690	RCP2-690			
	97.0			RCP1-697	RCP2-697			
	100.0			RCP1-6100	RCP2-6100			
	101.6			RCP1-6101.6	RCP2-6101.6			
	108.0			RCP1-6108	RCP2-6108			
	114.3			RCP1-6114.3	RCP2-6114.3			
	115.0			RCP1-6115	RCP2-6115			
	120.0			RCP1-6120	RCP2-6120			
	127.0			RCP1-6127	RCP2-6127			
	7			127.0	G 5	5	RCP1-7127	RCP2-7127
130.0		RCP1-7130	RCP2-7130					
133.0		RCP1-7133	RCP2-7133					
140.0		RCP1-7140	RCP2-7140					
150.0		RCP1-7150	RCP2-7150					
152.4		RCP1-7152.4	RCP2-7152.4					
159.0		RCP1-7159	RCP2-7159					
165.1		RCP1-7165.1	RCP2-7165.1					
168.3		RCP1-7168.3	RCP2-7168.3					
8		168.3	G 6	6 5/8			RCP1-8168.3	RCP2-8168.3
	177.8	RCP1-8177.8			RCP2-8177.8			
	190.0	RCP1-8190			RCP2-8190			
	193.7	RCP1-8193.7			RCP2-8193.7			
	203.0	RCP1-8203			RCP2-8203			
	219.1	RCP1-8219.1			RCP2-8219.1			
	220.0	RCP1-8220			RCP2-8220			
	9	219.1			G 8	8 5/8	RCP1-9219.1	RCP2-9219.1
		244.5					RCP1-9244.5	RCP2-9244.5
		273.0					RCP1-9273	RCP2-9273
323.9		RCP1-9323.9	RCP2-9323.9					
10	355.6	G 14	12 3/4	RCP1-10355.6	RCP2-10355.6			
	406.4			RCP1-10406.4	RCP2-10406.4			

Delivery in unassembled individual components.

¹⁾ Only sizes 1-8

²⁾ When assembling solid rubber clamps, covering plates, hexagon screws and locking washers must be used.

Tube clamps

Tube clamps series C – Complete range

Order codes for clamp halves:

Material	Interior surface	Order code
Polypropylene	grooved	RCP
	smooth	RCPG ¹⁾
Polyamide	grooved	RCN
	smooth	RCNG ¹⁾
Rubber	grooved	RCVR ¹⁾²⁾
	smooth	RCVG ¹⁾²⁾
Aluminium	grooved	RCA

(Please exchange as required standard abbreviation RCP in column for "Order code")

For flame- or corrosion retardant materials, please refer to page S5.

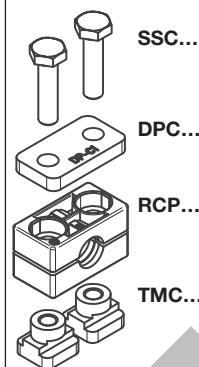
The steel parts of kits 3, 4 and 5 have the following surfaces:

Bolts, cover plate, locking plate = phosphated

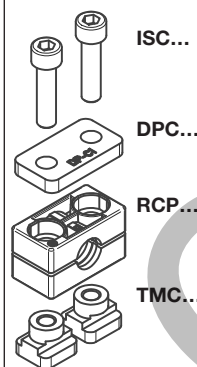
Rail nuts = Cr(VI)-free galvanized

Other compositions available on request.

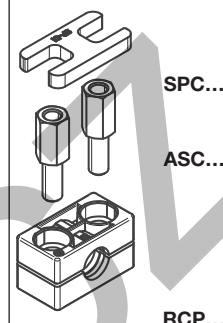
2 clamp halves,
rail nuts, cover plate,
hex. head bolts



2 clamp halves,
rail nuts, cover plate,
socket head bolts



2 clamp halves, lock-
ing plate, stacking
bolts



clamp size	Tube O.D. mm	Tube NB	Tube O.D.	Order code	Order code	Order code	
1	6.0	G 1/8	5/16	RCP3-106	RCP4-106	RCP5-106	
	8.0		3/8	RCP3-108	RCP4-108	RCP5-108	
	9.5		RCP3-109.5	RCP4-109.5	RCP5-109.5		
	10.0		RCP3-110	RCP4-110	RCP5-110		
	12.0	G 1/4	1/2	RCP3-112	RCP4-112	RCP5-112	
	12.7		RCP3-112.7	RCP4-112.7	RCP5-112.7		
	13.5		RCP3-113.5	RCP4-113.5	RCP5-113.5		
	14.0		RCP3-114	RCP4-114	RCP5-114		
	15.0	G 3/8	5/8	RCP3-115	RCP4-115	RCP5-115	
	16.0		RCP3-116	RCP4-116	RCP5-116		
17.2	RCP3-117.2		RCP4-117.2	RCP5-117.2			
18.0	RCP3-118		RCP4-118	RCP5-118			
2	19.0	G 1/2	3/4	RCP3-219	RCP4-219	RCP5-219	
	20.0		RCP3-220	RCP4-220	RCP5-220		
	21.3		RCP3-221.3	RCP4-221.3	RCP5-221.3		
	22.0		RCP3-222	RCP4-222	RCP5-222		
	23.0	G 3/4	1	RCP3-223	RCP4-223	RCP5-223	
	25.0		RCP3-225	RCP4-225	RCP5-225		
	25.4		RCP3-225.4	RCP4-225.4	RCP5-225.4		
	26.9		RCP3-226.9	RCP4-226.9	RCP5-226.9		
	28.0	G 1	1 1/4	RCP3-228	RCP4-228	RCP5-228	
	30.0		RCP3-230	RCP4-230	RCP5-230		
30.0	G 1		1 1/4	RCP3-330	RCP4-330	RCP5-330	
32.0			RCP3-332	RCP4-332	RCP5-332		
33.7		RCP3-333.7	RCP4-333.7	RCP5-333.7			
35.0		RCP3-335	RCP4-335	RCP5-335			
3	38.0	G 1 1/4	1 1/2	RCP3-338	RCP4-338	RCP5-338	
	40.0		RCP3-340	RCP4-340	RCP5-340		
	42.0		RCP3-342	RCP4-342	RCP5-342		
	38.0		G 1 1/4	1 1/2	RCP3-438	RCP4-438	RCP5-438
	40.0	RCP3-440		RCP4-440	RCP5-440		
	42.0	RCP3-442		RCP4-442	RCP5-442		
	45.0	RCP3-445		RCP4-445	RCP5-445		
	4	48.3	G 1 1/2	2	RCP3-448.3	RCP4-448.3	RCP5-448.3
		50.0		RCP3-450	RCP4-450	RCP5-450	
		51.0		RCP3-451	RCP4-451	RCP5-451	
52.0		RCP3-452		RCP4-452	RCP5-452		
55.0		G 2	2 1/4	RCP3-455	RCP4-455	RCP5-455	
57.0			RCP3-457	RCP4-457	RCP5-457		
60.3			2 1/4	RCP3-460.3	RCP4-460.3	RCP5-460.3	
63.0			2 1/2	RCP3-463	RCP4-463	RCP5-463	
65.0		G 2	2 1/2	RCP3-465	RCP4-465	RCP5-465	
70.0			RCP3-470	RCP4-470	RCP5-470		

Continuation see next page ...

Tube clamps series C – Complete range (Continued)

Order codes for clamp halves:

Material	Interior surface	Order code
Polypropylene	grooved	RCP
	smooth	RCPG ¹⁾
Polyamide	grooved	RCN
	smooth	RCNG ¹⁾
Rubber	grooved	RCVR ¹⁾²⁾
	smooth	RCVG ¹⁾²⁾
Aluminium	grooved	RCA

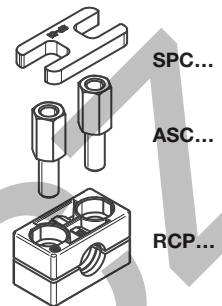
(Please exchange as required standard abbreviation RCP in column for "Order code")

For flame- or corrosion retardant materials, please refer to page S5.

The steel parts of kits 5 are phosphated.

Other compositions available on request.

2 clamp halves, locking plate, stacking bolts



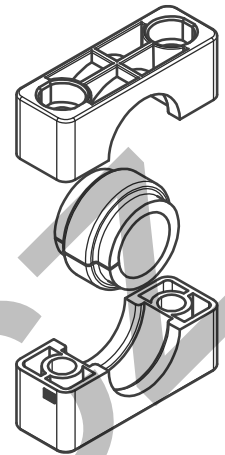
clamp size	Tube O.D. mm	Tube NB	Tube O.D.	Order code
5	65.0	G 2 1/2	3	RCP5-565
	70.0			RCP5-570
	73.0			RCP5-573
	75.0			RCP5-575
	76.1			RCP5-576.1
	80.0			RCP5-580
	82.5			RCP5-582.5
	85.0			RCP5-585
	88.0			RCP5-588
	88.9			RCP5-588.9
6	90.0	G 3	3 1/2	RCP5-590
	97.0			RCP5-690
	100.0			RCP5-697
	101.6			RCP5-6100
	108.0			RCP5-6101.6
	114.3			RCP5-6108
	115.0			RCP5-6114.3
	120.0			RCP5-6115
	127.0			RCP5-6120
	7			127.0
130.0		RCP5-690		
133.0		RCP5-697		
140.0		RCP5-7133		
150.0		RCP5-7140		
152.4		RCP5-7150		
159.0		RCP5-7152.4		
165.1		RCP5-7159		
168.3		RCP5-7165.1		
8		168.3	G 4	4 1/2
	177.8	RCP5-7130		
	190.0	RCP5-7133		
	193.7	RCP5-7140		
	203.0	RCP5-7150		
	219.1	RCP5-7152.4		
	220.0	RCP5-7159		
		RCP5-7165.1		
		RCP5-7168.3		
		168.3		
177.8		RCP5-8177.8		
190.0		RCP5-8190		
193.7		RCP5-8193.7		
203.0		RCP5-8203		
	219.1	G 6	6 1/4	RCP5-8219.1
	220.0			RCP5-8220
				RCP5-8220
	168.3	G 5 1/2	6	RCP5-8168.3
	177.8			RCP5-8177.8
	190.0			RCP5-8190
	193.7			RCP5-8193.7
	203.0			RCP5-8203
	219.1	G 6	6 1/2	RCP5-8219.1
	220.0			RCP5-8220
				RCP5-8220
	168.3	G 6	6 5/8	RCP5-8168.3
	177.8			RCP5-8177.8
	190.0			RCP5-8190
	193.7			RCP5-8193.7
	203.0			RCP5-8203
	219.1	G 8	8 5/8	RCP5-8219.1
	220.0			RCP5-8220
				RCP5-8220

Delivery in unassembled individual components.

¹⁾ Only sizes 1–8

²⁾ When assembling solid rubber clamps, covering plates, hexagon screws and locking washers must be used.

Tube Clamps with Elastomer Inlay Serie C



Clamp-halves

Order codes:

Polypropylene – **RCPE**

Polyamide 6 – **RCNE**

If required, replace the standard indicator RCPE in the order code columns.

Elastomer Inlay

Order code:

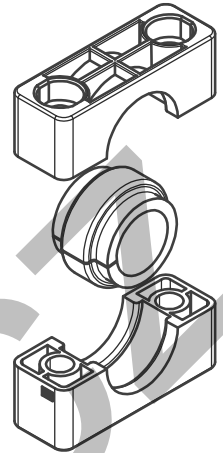
TPE 73° Shore – **EE***

*complete with clamp size and outside tube diameter

Clamp size Serie C	Tube O.D. mm	Clamp body	Order code Clamp body with elastomer inlay	Elastomer inlay
2	6.0	RCPE2X	RCPE206X	EE206/406X
	8.0		RCPE208X	EE208/408X
	10.0		RCPE210X	EE210/410X
	12.0		RCPE212X	EE212/412X
	12.7		RCPE212.7X	EE212.7/412.7X
	14.0		RCPE214X	EE214/414X
	15.0		RCPE215X	EE215/415X
	16.0		RCPE216X	EE216/416X
	17.2		RCPE217.2X	EE217.2/417.2X
	18.0		RCPE218X	EE218/418X
19.0	RCPE219X	EE219/419X		
3	20.0	RCPE3X	RCPE320X	EE320/620X
	21.3		RCPE321.3X	EE321.3/621.3X
	22.0		RCPE322X	EE322/622X
	23.0		RCPE323X	EE323/623X
	25.0		RCPE325X	EE325/625X
	26.9		RCPE326.9X	EE326.9/626.9X
	28.0		RCPE328X	EE328/628X
	30.0		RCPE330X	EE330/630X
	32.0		RCPE332X	EE332/632X
	4		32.0	RCPE4X
33.7		RCPE433.7X	EE433.7X	
35.0		RCPE435X	EE435X	
38.0		RCPE438X	EE438X	
40.0		RCPE440X	EE440X	
42.0		RCPE442X	EE442X	
45.5		RCPE445.5X	EE445.5X	
48.0		RCPE448X	EE448X	
51.0		RCPE451X	EE451X	
53.4		RCPE453.4	EE453.4X	
56.4	RCPE456.4X	EE456.4X		
60.3	RCPE460.3X	EE460.3X		
5	57.0	RCPE5X	RCPE557X	EE557X
	60.3		RCPE560.3X	EE560.3X
	63.5		RCPE563.5X	EE563.5X
	65.0		RCPE565X	EE565X
	70.0		RCPE570X	EE570X
	73.0		RCPE573X	EE573X
76.1	RCPE576.1X	EE576.1X		

Attention! For clamps with elastomer inlay, the relation of diameter and size is not identical with the profile design or smooth design.

Tube Clamps with Elastomer Inlay Serie C



Clamp-halves

Order codes:

Polypropylene – **RCPE**
 Polyamide 6 – **RCNE**

If required, replace the standard indicator RCPE in the order code columns.

Elastomer Inlay

Order code:

TPE 73° Shore – **EE***
 *complete with clamp size and outside tube diameter

Clamp size Serie C	Tube O.D. mm	Order code		
		Clamp body	Clamp body with elastomer inlay	Elastomer inlay
6	80.0	RCPE6X	RCPE680X	EE680X
	82.5		RCPE682.5X	EE682.5X
	88.9		RCPE688.9X	EE688.9X
	100.0		RCPE6100X	EE6100X
	101.6		RCPE6101.6X	EE6101.6X
7	101.6	RCPE7X	RCPE7101.6X	EE7101.6X
	108.0		RCPE7108X	EE7108X
	114.3		RCPE7114.3X	EE7114.3X
	127.0		RCPE7127X	EE7127X
	133.0		RCPE7133X	EE7133X

Attention! For clamps with elastomer inlay, the relation of diameter and size is not identical with the profile design or smooth design.