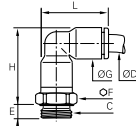


6959 Stud Elbow, Male BSPP and Metric Thread

Bio-based polymer, stainless steel 316L, EPDM

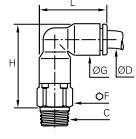


ØD	C		E	F	G	H	L	Kg
4	M5x0.8	6959 04 19	3.5	10	8.5	23	19	0.009
	G1/8	6959 04 10	4.5	13	8.5	22.5	19	0.009
	G1/4	6959 04 13	5.5	16	8.5	22.5	19	0.014
6	M5x0.8	6959 06 19	3.5	10	10.5	26.5	22.5	0.008
	G1/8	6959 06 10	4.5	13	10.5	26.5	22.5	0.011
	G1/4	6959 06 13	5.5	16	10.5	26.5	22.5	0.016
8	G1/8	6959 08 10	4.5	13	13.5	35	29.5	0.018
	G1/4	6959 08 13	5.5	16	13.5	33	29.5	0.020
	G3/8	6959 08 17	5.5	21	13.5	33	29.5	0.028
10	G1/4	6959 10 13	5.5	16	16	40.5	34	0.029
	G3/8	6959 10 17	5.5	21	16	39	34	0.037
	G1/2	6959 10 21	7	24	16	39	34	0.042
12	G1/4	6959 12 13	5.5	19	19	44	40	0.042
	G3/8	6959 12 17	5.5	21	19	42	40	0.040
	G1/2	6959 12 21	7	24	19	42	40	0.049
16	G3/8	6959 16 17	7.5	27	27	54	52	0.088
	G1/2	6959 16 21	9	27	27	55	52	0.084
	G3/4	6959 16 27	10.5	32	27	55	52	0.120

The body swivels for positioning purposes.

6979 Stud Elbow, Male BSPT Thread

Bio-based polymer, stainless steel 316L, EPDM

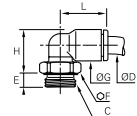


ØD	C		F	G	H	L	Kg
4	R1/8	6979 04 10	10	8.5	23	19	0.008
	R1/4	6979 04 13	14	8.5	23.5	19	0.018
6	R1/8	6979 06 10	10	10.5	27	22.5	0.010
	R1/4	6979 06 13	14	10.5	27.5	22.5	0.020
8	R1/8	6979 08 10	13	13.5	33.5	29.5	0.018
	R1/4	6979 08 13	14	13.5	32.5	29.5	0.022
10	R3/8	6979 08 17	17	13.5	33	29.5	0.032
	R1/4	6979 10 13	15	16	39.5	34	0.031
12	R3/8	6979 10 17	17	16	39.5	34	0.041
	R1/2	6979 10 21	21	16	39.5	34	0.060
12	R3/8	6979 12 17	19	19	45.5	40.5	0.051
	R1/2	6979 12 21	21	19	45.5	40.5	0.065

The body swivels for positioning purposes.

6989 Stud Elbow, Male BSPP and Metric Thread

Technical polymer, Nickel-plated brass, NBR



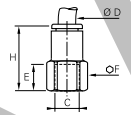
ØD	C		E	F	G	H	L	Kg
4	M5x0.8	6989 04 19	3.5	8	8.5	13.5	14	0.002
	G1/8	6989 04 10	5	13	8.5	13	14	0.006
	G1/4	6989 04 13	5.5	16	8.5	13	14	0.011
6	M5x0.8	6989 06 19	3.5	8	10.5	15.5	16	0.003
	G1/8	6989 06 10	5	13	10.5	15	16	0.006
	G1/4	6989 06 13	5.5	16	10.5	15	16	0.011
8	G1/8	6989 08 10	4.5	13	13.5	20.5	23	0.009
	G1/4	6989 08 13	5.5	16	13.5	18.5	23	0.012
	G3/8	6989 08 17	5.5	20	13.5	18.5	23	0.017
10	G1/4	6989 10 13	5.5	16	16	23.5	26.5	0.014
	G3/8	6989 10 17	5.5	20	16	22	26.5	0.017
	G1/4	6989 12 13	5.5	16	19	26.5	31	0.016
12	G3/8	6989 12 17	5.5	20	19	25	31	0.019
	G1/2	6989 12 21	7	24	19	25	31	0.029

The body swivels for positioning purposes.

*Bi-material seal

6974 Stud Fitting, Female BSPP Thread

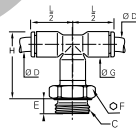
Stainless steel 316L, EPDM



ØD	C		E	F	H	Kg	
16	G3/8	6974 16 17		17	27	44	0.060
	G1/2	6974 16 21		21.5	27	17	0.065
16	G3/4	6974 16 27		19	32	47	0.097

6958 Stud Branch Tee, Male BSPP and Metric Thread

Bio-based polymer, stainless steel 316L, EPDM



ØD	C		E	F	G	H	L/2	Kg
4	G1/8	6958 04 10	5	13	8.5	22	14	0.009
	G1/4	6958 04 13	5.5	16	8.5	22	14	0.014
6	G1/8	6958 06 10	5	13	10.5	28.5	16	0.011
	G1/4	6958 06 13	5.5	16	10.5	28.5	16	0.016
8	G1/8	6958 08 10	4.5	13	13.5	38	23	0.019
	G3/8	6958 08 17	5.5	21	13.5	36	23	0.030
10	G1/4	6958 10 13	5.5	16	16	43	26.5	0.032
	G3/8	6958 10 17	5.5	21	16	43	26.5	0.055
	G1/2	6958 10 21	7.5	24	16	43	26.5	0.051
12	G3/8	6958 12 17	5.5	21	19	45.5	31	0.042
	G1/2	6958 12 21	7	24	19	45.5	31	0.049

The body swivels for positioning purposes.