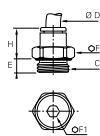


6901 Stud Fitting, Male BSPP and Metric Thread

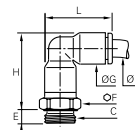
FDA chemical Nickel-plated brass, EPDM



ØD	C		E	F	F1	H	Kg
4	M5x0.8	6901 04 19	3	8	2.5	14	0.003
	G1/8	6901 04 10	5.5	13	3	11.5	0.007
6	M5x0.8	6901 06 19	3	11	2.5	16	0.005
	G1/8	6901 06 10	4.5	13	4	13	0.007
8	G1/4	6901 06 13	5.5	16	4	12.5	0.011
	G1/8	6901 08 10	4.5	13	5	20.5	0.011
10	G1/4	6901 08 13	5.5	16	6	19.5	0.016
	G3/8	6901 08 17	5.5	20	6	18	0.022
12	G1/4	6901 10 13	5.5	16	7	23	0.018
	G3/8	6901 10 17	5.5	20	8	19.5	0.021
12	G1/2	6901 10 21	7	24	8	18	0.033
	G1/2	6901 12 21	7	24	10	22.5	0.035

6999 Stud Elbow, Male BSPP and Metric Thread

Bio-based polymer, FDA chemical Nickel-plated brass, EPDM

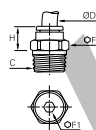


ØD	C		E	F	G	H	L	Kg
4	M5x0.8	6999 04 19	3.5	8	8.5	23	19	0.005
	G1/8	6999 04 10	4.5	13	8.5	22.5	19	0.009
6	M5x0.8	6999 06 19	3.5	10	10.5	26.5	22.5	0.008
	G1/8	6999 06 10	4.5	13	10.5	26.5	22.5	0.011
8	G1/4	6999 06 13	5.5	16	10.5	26.5	22.5	0.016
	G1/8	6999 08 10	4.5	13	13.5	35	29.5	0.018
10	G1/4	6999 08 13	5.5	16	13.5	33	29.5	0.020
	G3/8	6999 08 17	5.5	20	13.5	33	29.5	0.028
12	G1/4	6999 10 13	5.5	16	16	40.5	34	0.029
	G3/8	6999 10 17	5.5	20	16	39	34	0.037
12	G1/2	6999 10 21	7	24	16	39	34	0.042
	G3/8	6999 12 17	5.5	20	19	42	40	0.040
12	G1/2	6999 12 21	7	24	19	42	40	0.049

The body swivels for positioning purposes.

6905 Stud Fitting, Male BSPT Thread

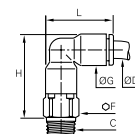
FDA chemical Nickel-plated brass, EPDM



ØD	C		F	F1	H	Kg
4	R1/8	6905 04 10	10	3	9.5	0.005
	R1/4	6905 04 13	14	3	6.5	0.012
6	R1/8	6905 06 10	10	4	11.5	0.005
	R1/4	6905 06 13	14	4	8.5	0.011
8	R1/8	6905 08 10	13	5	20	0.011
	R1/4	6905 08 13	14	6	17	0.014
10	R3/8	6905 08 17	17	6	13	0.021
	R1/4	6905 10 13	16	7	20	0.017
12	R3/8	6905 10 17	17	8	16.5	0.019
	R1/2	6905 10 21	21	8	14	0.037
12	R3/8	6905 12 17	19	9	24	0.028
	R1/2	6905 12 21	21	10	19.5	0.036

6909 Stud Elbow, Male BSPT Thread

Bio-based polymer, FDA chemical Nickel-plated brass, EPDM



ØD	C		F	G	H	L	Kg
4	R1/8	6909 04 10	10	8.5	23	19	0.008
	R1/4	6909 04 13	14	8.5	23.5	19	0.018
6	R1/8	6909 06 10	10	10.5	27	22.5	0.010
	R1/4	6909 06 13	14	10.5	27.5	22.5	0.020
8	R1/8	6909 08 10	13	13.5	33.5	29.5	0.018
	R1/4	6909 08 13	14	13.5	32.5	29.5	0.022
10	R3/8	6909 08 17	17	13.5	33	29.5	0.032
	R1/4	6909 10 13	15	16	39.5	34	0.031
12	R3/8	6909 10 17	17	16	39.5	34	0.041
	R1/2	6909 10 21	21	16	39.5	34	0.060
12	R3/8	6909 12 17	19	19	45.5	40.5	0.051
	R1/2	6909 12 21	21	19	45.5	40.5	0.065

The body swivels for positioning purposes.