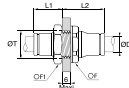


LF 3800 Push-In Fittings

3816 Equal Bulkhead Connector

Stainless steel 316L, FKM

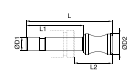


ØD		F	F1	L1	L2	ØT	Kg
4	3816 04 00	13	14	13.5	19.5	13	0.017
6	3816 06 00	17	17	16.5	21.5	14	0.027
8	3816 08 00	19	19	18	24	16	0.034
10	3816 10 00	22	22	21.5	27.5	21	0.048
12	3816 12 00	24	24	24	29	23	0.059

IP55 sealing

3826 Blanking Plug

Stainless steel 316L

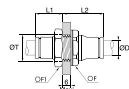


ØD1	ØD2		L	L1	L2	Kg
4	6	3826 04 00	25	17	11	0.003
6	8	3826 06 00	30.4	19.5	13.5	0.007
8	10	3826 08 00	38	20	14	0.014
10	12	3826 10 00	40	25	17	0.025
12	14	3826 12 00	43	26	19	0.039

3816 Equal Bulkhead Connector

Inch

Stainless steel 316L, FKM



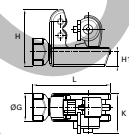
ØD		F	F1	L1	L2	ØT	Kg
3/16	3816 55 00	17	13	15	18	12.5	0.017
1/4	3816 56 00	19	17	19	21	15	0.027
3/8	3816 60 00	22	22	22	27	21	0.052
1/2	3816 62 00	27	27	25	28	25	0.076

IP55 sealing

5/32" (4 mm) and 5/16" (8 mm) also available

3800 Pre-Grooving Tool for Metallic Tubing

Treated steel

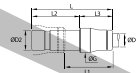


	G	H	H1	K	L	Kg
3800 70 00	25	51	13	36	70	0.326

This tool correctly pre-grooves 4-12 mm O.D. and 3/16"-1/2" O.D. stainless steel tubing, to ensure that the LF 3800 collet grips the tube securely.

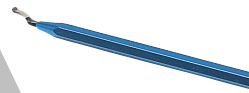
3866 Push-In Reducer

Stainless steel 316L, FKM



ØD1	ØD2		G	L	L1	L2	L3	Kg
4	6	3866 04 06	10	35	19	19	16	0.008
4	8	3866 04 08	10	34	17	20	14	0.011
6	8	3866 06 08	12	42	24	23	19	0.015
6	10	3866 06 10	12	41	19	25	16	0.019
8	10	3866 08 10	15	45	22.5	25	20	0.021
8	12	3866 08 12	15	43	20	26	17	0.025
10	12	3866 10 12	17	50	23	26	24	0.029

6698 Deburring Tool for Rigid Aluminium Pipe



	L	Kg
6698 04 02	140	0.026