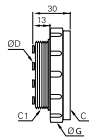


3321 Multi-Connector Female Screw Body

Technical polymer, NBR

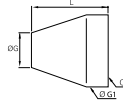


ØD	C	C1		Number of Outlets	G	Kg
4	M46x1.5	M40x1.5	3321 04 00 04	4	55	0.065
	M46x1.5	M40x1.5	3321 04 00 07	7	55	0.063
	M65x1.5	M58x1.5	3321 04 00 12	12	75	0.125
6	M46x1.5	M40x1.5	3321 06 00 04	4	55	0.065
	M46x1.5	M40x1.5	3321 06 00 07	7	55	0.064

The number of female body outlets must correspond to the same number of outlets on the male body.

3329 Multi-Connector Screw Cap

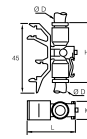
Technical polymer



C		Number of Outlets	G	G1	L	Kg
M40x1.5	3329 00 02	4-7	35	50	55	0.062
M58x1.5	3329 00 03	12	34	70	70	0.139

3379 DIN Rail Connector for 2 Tubes

Technical polymer, NBR

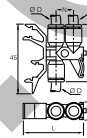


ØD		H	K	L	Kg
4	3379 04 00	34.5	11	39.5	0.010
6	3379 06 00	34.5	11	39.5	0.006
8	3379 08 00	46	13	44.5	0.008

Start pressure test point on the system

3381 DIN Rail Connector for 3 Tubes

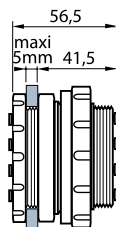
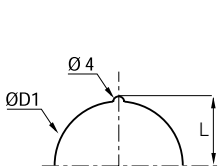
Technical polymer, NBR



ØD		H	K	L	N	Kg
4	3381 04 00	36.5	11	39.5	11.5	0.013
6	3381 06 00	36.5	11	39.5	11.5	0.007
8	3381 08 00	46	13	44.5	14.5	0.033

Start pressure test point on the system

Overall Dimensions for Bulkhead Mounting



Number of Outlets	L	ØD1
2	17	32.5
4-7	21	40.5
12	30.3	58.5