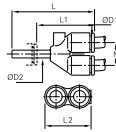


3142 Equal and Unequal Plug-In Single Y Piece

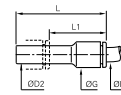
Technical polymer, NBR



ØD1	ØD2		L	L1	L2	N	Kg
4	4	3142 04 00	34	21.5	17.5	9	0.002
	6	3142 04 06	35.5	21.5	17.5	9	0.002
6	6	3142 06 00	39.5	25.5	21.5	11	0.004
	8	3142 06 08	44.5	26	22	11	0.006
8	8	3142 08 00	50.5	32	28	14.5	0.007
	10	3142 08 10	53.5	32	28	14.5	0.022
10	10	3142 10 00	57.5	36	33	17	0.010
	12	3142 10 12	60	35	33	17	0.035
12	12	3142 12 00	66	41	39	20	0.017

3166 Plug-In Reducer

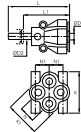
Technical polymer, NBR



ØD1	ØD2		G	L	L1	Kg
3	4	3166 03 04	8.5	37.5	23.5	0.002
	6	3166 04 06	8.5	37.5	23.5	0.001
4	8	3166 04 08	8.5	37.5	19	0.001
	10	3166 04 10	10.5	38	18	0.003
6	8	3166 06 08	10.5	37.5	20	0.001
	10	3166 06 10	10.5	38	17.5	0.002
6	12	3166 06 12	14.5	46	23	0.005
	14	3166 06 14	14.5	48	23	0.007
8	10	3166 08 10	13.5	49	28.5	0.003
	12	3166 08 12	13.5	49	24.5	0.004
8	14	3166 08 14	17	48	23	0.007
	12	3166 10 12	21.5	56.5	33.5	0.005
10	14	3166 10 14	21.5	58.5	33.5	0.005
	12	3166 12 14	23.5	58.5	33.5	0.007

3143 Multiple Plug-In Y Piece

Technical polymer, Nickel-plated brass, NBR

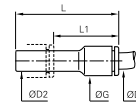


ØD1	ØD2		K	K1	L	L1	N	N1	Kg
4	6	3143 04 06	26	21.5	49.5	35.5	11	8.5	0.018
	8	3143 04 08	26	21.5	51	32	11	8.5	0.021
6	8	3143 06 08	31.5	26.5	57.5	39	12	10	0.035

3166 Plug-In Reducer

Inch

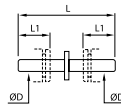
Technical polymer, NBR



ØD1	ØD2		G	L	L1	Kg
1/4	5/16	3166 56 08	11	41	23	0.002
	3/8	3166 56 60	11	41	21	0.002

3120 Stem Connector

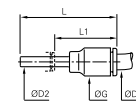
Technical polymer



ØD		L	L1	Kg
4	3120 04 00	34.5	12	0.001
6	3120 06 00	38.5	14	0.001
8	3120 08 00	41	18.5	0.001
10	3120 10 00	51.5	20.5	0.002
12	3120 12 00	60	24.5	0.004
14	3120 14 00	69.5	25.5	0.007

3168 Plug-In Increaser

Technical polymer, NBR



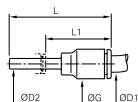
ØD1	ØD2		G	L	L1	Kg
6	4	3168 06 04	10.5	35	23	0.002
	6	3168 08 06	13.5	45	31.5	0.003
8	1/4	3168 08 56	16	40	25.5	0.009
	8	3168 10 08	16	42.5	21	0.004
12	10	3168 12 10	19	49	24.5	0.006

This model exists in nickel-plated brass; please use suffix 85. Example: 3120 06 00 85
Only compatible with Parker Legris fittings. Drawing available upon request.

3168 Plug-In Increaser

Inch

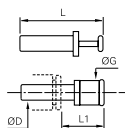
Technical polymer, NBR



ØD1	ØD2		G	L	L1	Kg
1/4	3/16	3168 56 55	20.5	41	25	0.002
	5/32	3168 56 04	11	41	29	0.002

3126 Blanking Plug

Technical polymer



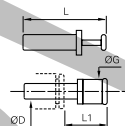
ØD		G	L	L1	Kg
3	3126 03 00	6	25	13.5	0.001
4	3126 04 00	4	30	15.5	0.001
6	3126 06 00	8	33	16.5	0.001
8	3126 08 00	10	35	17.5	0.001
10	3126 10 00	12	42	21	0.002
12	3126 12 00	14	45	22	0.003
14	3126 14 00	16	49	23.5	0.005
16	3126 16 00*	19	57	30	0.064

*Nickel-plated brass

3126 Blanking Plug

Inch

Technical polymer

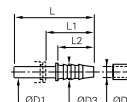


ØD		G	L	L1	Kg
1/4	3126 56 00	8	36.5	22	0.001
3/8	3126 60 00	12	42	22	0.002
1/2	3126 62 00	15	48.5	21.5	0.003

5/32"(4 mm) and 5/16"(8 mm) also available

3122 Plug-In Barb Connector

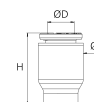
Technical polymer



ØD1	ØD2	ØD3		L	L1	L2	Kg
4	3.2	5	3122 04 53	37	25	17	0.004
	5	7	3122 04 05	37	25	17	0.001
6	5	7	3122 06 05	39	25	17	0.001
	6.3	8.5	3122 08 56	39.5	21	17	0.001
8	8	10	3122 08 08	44.5	26	22	0.001
	6.3	8	3122 10 56	45	24.5	17	0.002
10	8	10	3122 10 08	50	29.5	22	0.002
	8	10	3122 12 08	50	26	22	0.002
12	10	12	3122 12 10	48.5	25.5	22.5	0.002
	12.5	14.5	3122 12 62	57	34	22.5	0.004
14	12.5	14.5	3122 14 62	59.5	34.5	22.5	0.006

3151 End Cap

Technical polymer, NBR



ØD		G	H	Kg
4	3151 04 00	8.5	15	0.001
6	3151 06 00	10.5	17	0.001
8	3151 08 00	13.5	22	0.002
10	3151 10 00	16	22	0.003
12	3151 12 00	19	28	0.005
14	3151 14 00	22	31	0.009