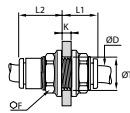


LF 3000® Push-In Fittings / Bulkhead Connector Fittings

3116 Equal Bulkhead Connector

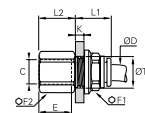
Technical polymer, NBR



ØD		F	K max	L1	L2	ØT min	Kg
4	3116 04 00	13	5.5	15	10	10.5	0.003
6	3116 06 00	15	8	19	11.5	12.5	0.004
8	3116 08 00	18	14.5	25	13.5	15.5	0.007
10	3116 10 00	22	14.5	27.5	15.5	18.5	0.011
12	3116 12 00	26	18.5	33	18	22.5	0.019
14	3116 14 00	29	20.5	37.5	20.5	25.5	0.028

3136 Bulkhead Connector, Female BSP Thread

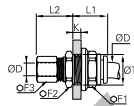
Nickel-plated brass, NBR



ØD	C		E	F1	F2	K max	L1	L2	ØT min	Kg
4	G1/8	3136 04 10	9.5	13	13	7	17	11.5	10.5	0.015
	G1/4	3136 04 13	13.5	13	16	7	17	15.5	10.5	0.021
	G1/8	3136 06 10	9.5	15	15	8	19	10.5	12.5	0.021
6	G1/4	3136 06 13	13.5	15	17	7	19	15.5	12.5	0.027
	G3/8	3136 06 17	12	15	22	8	19	16	12.5	0.041
8	G1/8	3136 08 10	9.5	18	17	8	20.5	10.5	15.5	0.029
	G1/4	3136 08 13	13.5	18	17	8	20.5	14.5	15.5	0.029
10	G3/8	3136 10 17	14	22	22	8.5	23	16	18.5	0.050
12	G3/8	3136 12 17	14	26	24	8.5	27	16	22.5	0.079
	G1/2	3136 12 21	19.5	26	27	8.5	27	21.5	22.5	0.098
16	G3/8	3136 16 17	12	29	29	10.5	30	15	27.5	0.125
	G1/2	3136 16 21	15	29	29	10.5	30	19.5	27.5	0.126

3146 Equal Mixed Bulkhead Connector

Nickel-plated brass, NBR

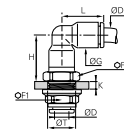


ØD		F1	F2	F3	K max	L1	L2	ØT min	Kg
4	3146 04 00	13	13	10	7	17.5	17.5	10.5	0.018
6	3146 06 00	15	17	13	8	19	18	12.5	0.028
8	3146 08 00	18	19	14	8	20.5	20.5	15.5	0.036
10	3146 10 00	22	22	19	8.5	23	24.5	18.5	0.062
12	3146 12 00	26	25	22	8.5	27	25	22.5	0.095
14	3146 14 00	29	29	24	10.5	27	27	25.5	0.124

Push-in connection with compression fitting

3139 Equal Bulkhead Elbow

Technical polymer, Nickel-plated brass, NBR



ØD		F	F1	G	H	K max	L	ØT min	Kg
4	3139 04 00	13	13	8.5	17	6.5	14.5	10.5	0.014
6	3139 06 00	17	15	10.5	19.5	7	17.5	12.5	0.021
8	3139 08 00	19	18	13.5	24	8	23	15.5	0.032
10	3139 10 00	22	22	16	28	8.5	26	18.5	0.048
12	3139 12 00	24	26	19	33	8.5	31	22.5	0.084
14	3139 14 00	27	29	25.5	37.5	10.5	36	25.5	0.117

The body swivels for positioning purposes.

Boxes protect the contents and are designed to meet your requirements:

- part numbers and corresponding product pictures allow for immediate visual identification
- bar codes
- easy storage
- tamper-proof system of opening/closing
- recyclable material

