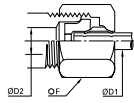


# Stainless Steel Compression Fittings / Complementary Fittings

## 1866 3-Piece Reducer

Stainless steel 316L



ØD1	ØD2		F	Kg
6	8	<b>1866 06 08</b>	14	0.011
	10	<b>1866 06 10</b>	19	0.027
8	10	<b>1866 08 10</b>	19	0.025

## 1824 Stainless Steel Olive

Stainless steel 316L



ØD		Kg
6	<b>1824 06 00</b>	0.002
8	<b>1824 08 00</b>	0.001
10	<b>1824 10 00</b>	0.003
12	<b>1824 12 00</b>	0.004
16	<b>1824 16 00</b>	0.005

## 1810 Stainless Steel Nut

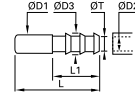
Stainless steel 316L



ØD	C		F	L	Kg
6	M10x1	<b>1810 06 00</b>	13	11	0.007
8	M12x1	<b>1810 08 00</b>	14	13	0.008
10	M16x1.5	<b>1810 10 00</b>	19	15	0.017
12	M18x1.5	<b>1810 12 00</b>	22	15	0.024
16	M22x1.5	<b>1810 16 00</b>	27	17	0.041

## 1822 Barb Adaptor for Hose

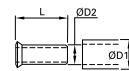
Stainless steel 316L



ØD1	ØD2	ØD3		L	L1	ØT min	Kg
6	7	9	<b>1822 06 07</b>	37.5	22.5	6	0.006
	6	8	<b>1822 08 06</b>	40	22.5	5	0.007
8	7	9	<b>1822 08 07</b>	40	22.5	6	0.007
	10	12.5	<b>1822 08 10</b>	40	22.5	9	0.011
10	7	9	<b>1822 10 07</b>	43	22.5	6	0.009
	10	12.5	<b>1822 10 10</b>	43	22.5	9	0.012
12	10	12.2	<b>1822 12 10</b>	43	22.5	9	0.012
	13	15	<b>1822 12 13</b>	50	29.5	13	0.015

## 1827 Stainless Steel Tube Support for Fluoropolymer Tubing

Stainless steel 316L



ØD1	ØD2		L	Kg
6	4	<b>1827 06 00</b>	11.5	0.001
8	6	<b>1827 08 00</b>	14	0.001
10	8	<b>1827 10 00</b>	18	0.001
12	9	<b>1827 12 09</b>	18	0.001
	10	<b>1827 12 00</b>	18	0.001
16	13	<b>1827 16 13</b>	18	0.002
	14	<b>1827 16 00</b>	18	0.002

This tube support is necessary when using fluoropolymer tubing at all temperatures compatible with the fitting/tubing assembly.