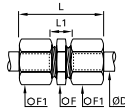


1806 Equal Tube-to-Tube Connector

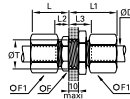
Stainless steel 316L



ØD		F	F1	L max	L1	Kg
6	1806 06 00	12	13	34.5	11	0.025
8	1806 08 00	13	14	38.5	10	0.029
10	1806 10 00	17	19	46	13	0.065
12	1806 12 00	19	22	47	13	0.085
16	1806 16 00	24	27	51	13	0.135

1816 Equal Bulkhead Connector

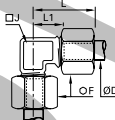
Stainless steel 316L



ØD		F	F1	L max	L1 max	L2	L3	ØT min	Kg
6	1816 06 00	13	13	28	19	7.5	17	10.5	0.034
8	1816 08 00	14	14	29	20	7	17	12.5	0.042
10	1816 10 00	19	19	33	25	9	19	16.5	0.093
12	1816 12 00	22	22	33	25	9	19	18.5	0.113
16	1816 16 00	27	27	36	28	9.5	19.5	22.5	0.179

1802 Equal Elbow

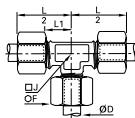
Stainless steel 316L



ØD		F	J	L max	L1	Kg
6	1802 06 00	13	8	25.5	13.5	0.027
8	1802 08 00	14	10	28.5	14.5	0.034
10	1802 10 00	19	12	32.5	16	0.070
12	1802 12 00	22	14	34	17	0.092
16	1802 16 00	27	18	39.5	21	0.151

1804 Equal Tee

Stainless steel 316L



ØD		F	J	L/2	L1	Kg
6	1804 06 00	13	8	25.5	13.5	0.039
8	1804 08 00	14	10	28.5	14.5	0.049
10	1804 10 00	19	12	32.5	16	0.100
12	1804 12 00	22	14	34	17	0.133
16	1804 16 00	27	18	39.5	21	0.216