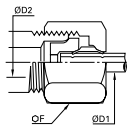


Brass Compression Fittings / Complementary Fittings

0166 3-Piece Reducer

Brass



ØD1	ØD2		F	Kg
4	6	0166 04 06	13	0.011
5	6	0166 05 06	13	0.010
6	8	0166 06 08	14	0.012
6	10	0166 06 10	19	0.030
6	12	0166 06 12	22	0.043
6	14	0166 06 14	24	0.052
6	16	0166 06 16	27	0.077
8	10	0166 08 10	19	0.027
8	12	0166 08 12	22	0.040
8	14	0166 08 14	24	0.050
8	16	0166 08 16	27	0.076
10	12	0166 10 12	22	0.037
10	14	0166 10 14	24	0.045
10	16	0166 10 16	27	0.069
10	18	0166 10 18	30	0.096
10	20	0166 10 20	32	0.107
10	22	0166 10 22	36	0.146
12	16	0166 12 16	27	0.066
12	22	0166 12 22	36	0.142
14	16	0166 14 16	27	0.060
14	18	0166 14 18	30	0.084
14	25	0166 14 25	41	0.189
16	20	0166 16 20	32	0.086
16	22	0166 16 22	36	0.125
18	22	0166 18 22	36	0.118
20	25	0166 20 25	41	0.168

ØD1: tube to be fitted

ØD2: for a x mm fitting

Each of the above part numbers comprises:

- a reduction piece
- an olive, PN 0124
- a sleeve nut

0124 Brass Olive

Brass



ØD		Kg
4	0124 04 00	0.001
5	0124 05 00	0.001
6	0124 06 00	0.001
8	0124 08 00	0.001
10	0124 10 00	0.003
12	0124 12 00	0.004
14	0124 14 00	0.005
15	0124 15 00	0.004
16	0124 16 00	0.006
18	0124 18 00	0.007
20	0124 20 00	0.009
22	0124 22 00	0.012
25	0124 25 00	0.016
28	0124 28 00	0.017

0124..40 Steel Olive

Zinc-plated steel



ØD		Kg
4	0124 04 00 40	0.001
5	0124 05 00 40	0.001
6	0124 06 00 40	0.001
8	0124 08 00 40	0.001
10	0124 10 00 40	0.003
12	0124 12 00 40	0.004
14	0124 14 00 40	0.005
15	0124 15 00 40	0.004
16	0124 16 00 40	0.006
18	0124 18 00 40	0.007
20	0124 20 00 40	0.008
22	0124 22 00 40	0.010
25	0124 25 00 40	0.014

0111 BNA* Brass Olive

Brass



ØD		Kg
4	0111 04 00	0.001
5	0111 05 00	0.001
6	0111 06 00	0.001
8	0111 08 00	0.001
10	0111 10 00	0.002
12	0111 12 00	0.002
14	0111 14 00	0.003
15	0111 15 00	0.003
16	0111 16 00	0.004

*Bureau de Normalisation de l'Automobile

0110 Brass Nut

Brass



ØD	C		F	L	Kg
4	M8x1	0110 04 00	10	11	0.004
5	M10x1	0110 05 00	12	11	0.006
6	M10x1	0110 06 00	13	11	0.008
8	M12x1	0110 08 00	14	13	0.008
10	M16x1.5	0110 10 00	19	15	0.019
12	M18x1.5	0110 12 00	22	15	0.025
14	M20x1.5	0110 14 00	24	15	0.029
15	M20x1.5	0110 15 00	24	15	0.028
16	M22x1.5	0110 16 00	27	17	0.044
18	M24x1.5	0110 18 00	30	18	0.059
20	M27x1.5	0110 20 00	32	18	0.059
22	M30x1.5	0110 22 00	36	19	0.081
25	M33x1.5	0110 25 00			0.131
28	M36x1.5	0110 28 00			0.108

Brass Compression Fittings / Complementary Fittings

0110..40 Steel Nut

Zinc-plated steel



ØD	C		F	L	Kg
4	M8x1	0110 04 00 40	10	11	0.004
6	M10x1	0110 06 00 40	13	12	0.008
8	M12x1	0110 08 00 40	14	13.5	0.008
10	M16x1.5	0110 10 00 40	19	16	0.018
12	M18x1.5	0110 12 00 40	22	16.5	0.026
16	M22x1.5	0110 16 00 40	27	18	0.042
18	M24x1.5	0110 18 00 40	30	19	0.057
22	M30x1.5	0110 22 00 40	36	21.5	0.084

0110..60 Brass Long Nut

Brass



ØD	C		F	L	Kg
4	M8x1	0110 04 00 60	11	14.5	0.007
6	M10x1	0110 06 00 60	13	17.5	0.011
8	M12x1	0110 08 00 60	16	20	0.018
10	M16x1.5	0110 10 00 60	20	23	0.032
12	M18x1.5	0110 12 00 60	22	25	0.038

0110..70 Technical Polymer Nut-Olive

Technical polymer



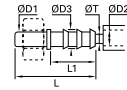
10 bar

ØD	C		F	L	Kg
4	M8x1	0110 04 00 70	8	13	0.001
6	M10x1	0110 06 00 70	11	15	0.002

NB: polymer nut-olives should not be used on metal tubes.

0122 Barb Connector for Hose

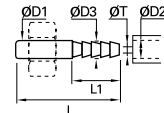
Brass



ØD1	ØD2	ØD3		L	L1	ØT min	Kg
4	4	6	0122 04 04	37.5	22.5	3	0.004
6	4	6	0122 06 04	37.5	22.5	3	0.005
	7	9	0122 06 07	37.5	22.5	6	0.007
8	6	8	0122 08 06	40	22.5	5	0.007
	7	9	0122 08 07	40	22.5	6	0.008
10	10	12.5	0122 08 10	40	22.5	9	0.012
	7	9	0122 10 07	43	22.5	6	0.010
12	10	12.5	0122 10 10	43	22.5	9	0.014
	10	12.5	0122 12 10	43	22.5	9	0.013
14	13	15	0122 12 13	50	29.5	12	0.018
	13	15	0122 14 13	52	29.5	12	0.019
15	16	18.5	0122 14 16	60.5	38	15	0.031
	13	15	0122 15 13	52	29.5	12	0.019
16	16	18.5	0122 15 16	60.5	38	15	0.032
	13	15	0122 16 13	53.5	29.5	12	0.021
18	16	18.5	0122 16 16	62	38	15	0.032
	16	18.5	0122 18 16	62	38	15	0.031
20	19	21.5	0122 18 19	62	38	18	0.040
	16	18.5	0122 20 16	64	38	15	0.034
22	19	21.5	0122 20 19	64	38	18	0.039
	19	21.5	0122 22 19	64	38	18	0.041
25	19	21.5	0122 25 19	70	38	18	0.048
	25	27.5	0122 25 25	70	38	24	0.054

0165 Barb Connector for Flexible Tubing

Brass



ØD1	ØD2	ØD3		L	L1	ØT min	Kg
4	4	4.3	0165 04 06	30	15	2	0.002
5	4	4.3	0165 05 06	30	15	2	0.003
	4	4.3	0165 06 06	30	15	2	0.003
6	6	6.4	0165 06 08	30	15	4	0.004
	8	8.4	0165 06 10	30	15	4	0.005
8	6	6.4	0165 08 08	32.5	15	4	0.006
	8	8.4	0165 08 10	32.5	15	6	0.006
10	10	10.7	0165 08 12	37.5	20	8	0.009
	8	8.4	0165 10 10	35.5	15	6	0.008
12	10	10.7	0165 10 12	40.5	20	8	0.010
	12	12.7	0165 10 14	40.5	20	8	0.012
14	10	10.7	0165 12 12	40.5	20	8	0.011
	12	12.7	0165 12 14	40.5	20	10	0.013
15	12	12.7	0165 14 14	42.5	20	10	0.015
	13	13.7	0165 15 16	42.5	20	11	0.015
16	13	13.7	0165 16 16	44	20	11	0.018